

# **A NEW DELTA 12" LATHE**

## ***That Has Everything!***



★  
Dependability

★  
Convenience

★  
Accuracy

★  
Rigidity

★  
Economy

★  
Utility

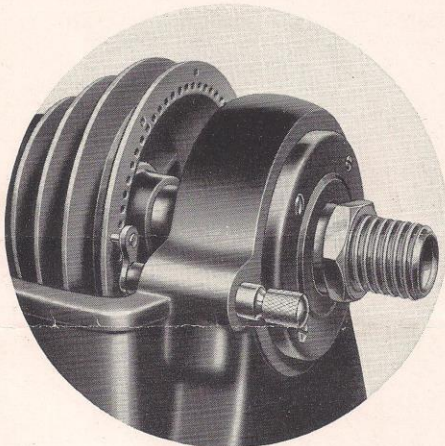
★  
Safety

*Built for Your  
Lasting  
Satisfaction*

*Delta Tool Company  
124 N. 2nd St.  
Wichita, Kan.*



# No Finer Lathe Has Ever B

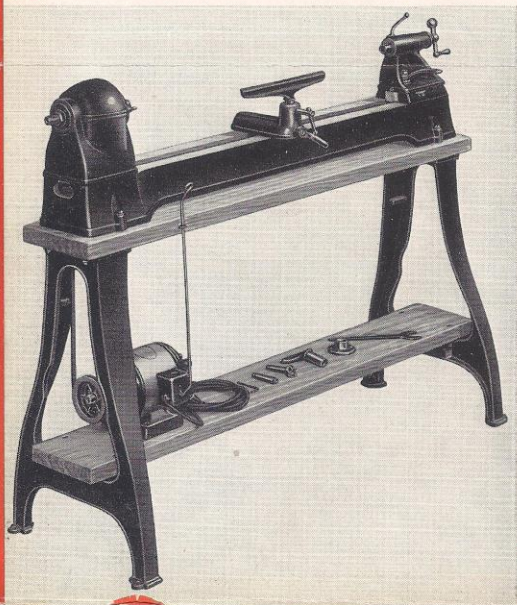


TWO rows of holes in the headstock pulley—one of eight and one of sixty holes—are engageable at will by the unique index pin. This enables the user to obtain the maximum number of index divisions, as he is not limited to the divisions obtainable with a single row of holes.

## The Ideal Lathe for Professional Woodworkers

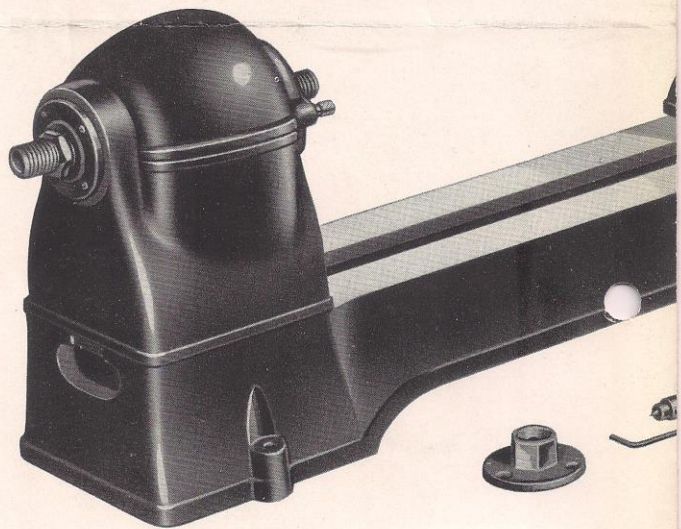
PROFESSIONAL shops need a lathe which is simple in design, exceptionally strong in construction, which is dependable in operation and which requires the minimum of attention. From its strong, heavily ribbed bed to its self-sealed ball-bearing spindle—which never requires lubrication during the entire life of the bearings, this lathe is the ideal answer to these requirements.

And, in addition, it is economical in price and can be fitted with slide rest for occasional jobs in metal.



## Check All These Fine Features:

NO MATTER what you want in a woodturning lathe—for the school shop—for the general woodworking shop—for the home workshop—you will find it in this new lathe. A heavy, rigid bed of fine-grained cast iron, with accurately machined and polished ways . . . a substantial cast-iron headstock, with built-in, removable belt guard . . . four-speed, efficient V-pulley drive, with double-row indexing mechanism for dividing, fluting, etc. . . heavy steel hollow spindle, threaded front and rear for faceplates, etc., and with No. 2 Morse-taper centers . . . carried on pre-loaded New Departure self-sealed bearings which never require lubrication . . . exceptionally handy, free-moving universal tool support, locked to bed at any angle by convenient handle at front, and fitted with two tool rests . . . substantial cast-iron tailstock, locked by front lever, and with self-ejecting center actuated by large, convenient ball-end crank handle.



## No. 1465 Four-Speed Unit:

### Consisting of:

1 No. 1460—Ball-Bearing Lathe .....	\$46.85
1 No. 1463—Stand for Lathe, complete.....	22.85
1 No. 932—Motor Pulley, 1/2" Bore.....	1.25
<b>TOTAL.....</b>	<b>\$70.95</b>

Shipping weight 253 lbs. Code word CASTR.

No. 1463—Lathe Stand only, Complete with Legs, Wood Top and Shelf and Bolts.....	\$22.85
--	---------

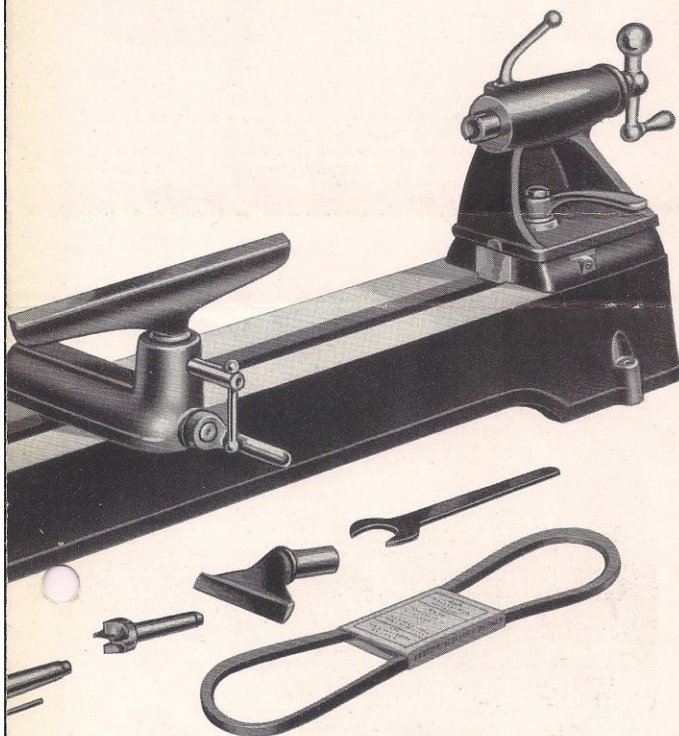
Shipping weight 118 lbs. Code word CASTP.

No. 1462—Slide Rest for 12" Lathe .....	\$20.85
---	---------

Shipping weight 35 lbs. Code word CASTO.

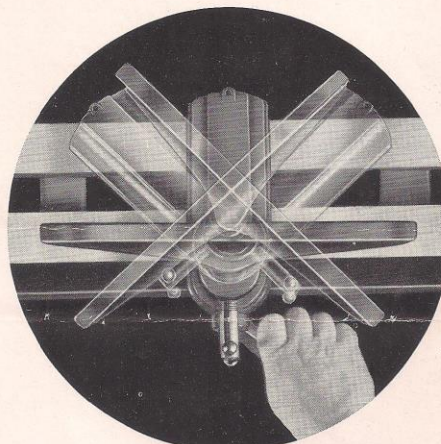


# een Offered—At Any Price!



**No. 1460 12" Lathe:**  
**\$46.85**

With Accessories as shown above  
 Without motor pulley  
 Shipping weight 135 lbs. Code word CASTL.



THE tool-rest support in this new lathe is exceptionally handy and convenient in action. Heavy and substantial to absorb any tendency to transmit chatter, it is locked to the bed at any position or angle by a lever located in front, where it does not interfere with work. Four-inch and twelve-inch tool rests are standard equipment.

## An All Around Lathe for the School Shop

SCHOOL shops need a GOOD lathe . . . at an economical price, and here is a modern school-shop lathe that will do everything that can be done with an old-fashioned, expensive machine . . . at a fraction of the price. Several of these lathes can be installed in the school shop for the price of one or two older-type machines. This permits more pupils to be handled for the same capital investment—and at no reduction in training efficiency!

## No. 1466 Sixteen-Speed Unit:

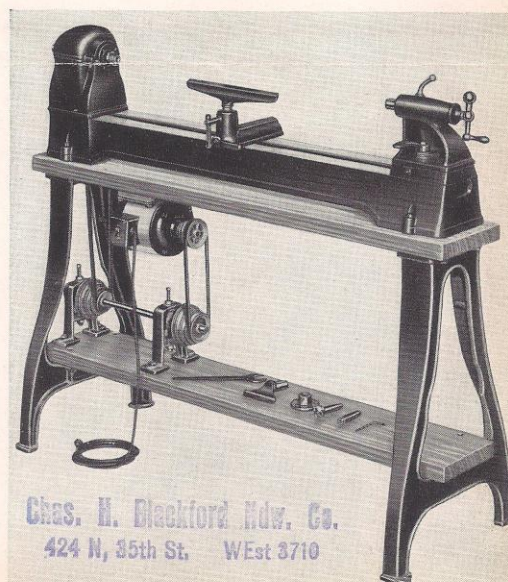
Consisting of:

1 No. 1460—Ball-Bearing Lathe . . . . .	\$46.85
1 No. 1463—Stand for Lathe, complete . . . . .	22.85
1 No. 1464—Countershaft Unit, complete . . . . .	11.40
<b>TOTAL . . . . .</b>	<b>\$81.10</b>

Shipping weight 278 lbs. Code word CASTS.

No. 1464—Countershaft Unit Only, consisting of: Two No. 370 Hangers; 1 No. 378 Shaft; 1 No. 718 Pulley, $\frac{1}{2}$ " Bore for Motor; 1 No. 720 Pulley, $\frac{3}{4}$ " Bore for Shaft; 1 No. 932 Pulley, $\frac{3}{4}$ " Bore for Shaft; 1 No. 284 V-Belt; 1 No. 644 V-Belt; 2 No. 374 Collars, Bolts and Nuts . . . . .	\$11.40
---	---------

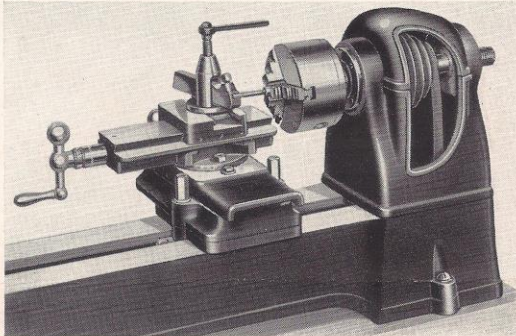
Shipping weight 25 lbs. Code word CASTQ.



Chas. H. Blackford Mfg. Co.  
 424 N. 35th St. West 3710



# Makes Economical Speed Lathe for Metal



THE addition of a compound slide rest to the No. 1460 lathe turns it into a fine speed lathe for toolroom, garage, service station and general shop. Industrial shops of all types find a lathe of this type ideal for special production jobs, since it is economical enough to be kept set up constantly, and versatile enough to be adaptable to a wide range of tooling.

The garage and service station finds it useful for armature-commutator turning and dozens of similar jobs that do not require the investment in a regular screw-cutting lathe. It is adaptable to all spindle turning, chucking and faceplate work that can be done in a regular toolroom speed lathe—yet it costs only a fraction of the price of such lathes.

When used as a metal-turning lathe, it should be equipped with No. 1462 slide rest and with No. 1464 countershaft to provide the low speeds necessary.

## Specifications

(No. 900 Motor recommended and No. 848 Switchrod)

Overall dimensions with regular tool rest: Length 57", Width 10 1/4", Height 13 3/4". Width with slide rest 15".

Bed: Heavy, substantial, fine-grained cast iron, heavily ribbed to provide utmost rigidity and accuracy. 53 1/2" long, 8 1/2" wide, 4 1/4" high. Machined and polished ways 2" wide front and back.

Headstock: Rigid, substantial cast-iron body, adapted to take V-belt drive from either bottom or rear. Fitted with belt guard completely covering top of headstock pulley and belt; guard instantly removable to facilitate changing belt on pulley cones. With built-in indexing mechanism having two rows of holes—8 holes and 60 holes—in cone pulley, to provide maximum number of index divisions. Index pin mounted to engage either row of holes.

Spindle: Full 1 1/4" diameter spindle, with 3/4" hole through center to facilitate repetition work. Nose machined No. 2 Morse taper for centers. Nose threaded 1/4" diameter 8 threads per inch for chucks and faceplates. Rear end of spindle with 1/4"—8 thread left-hand thread for outboard work. Spindle carried on two heavy-duty double-seal New Departure ball bearings, preloaded to insure maximum rigidity and accuracy. Spindle quickly removable to facilitate belt removal or installation. Standard Speeds: 900, 1400, 2200, 3400 R.P.M.

Tailstock: Substantial, fine-grained cast-iron body, with sub-base and provision for set-over of tailstock for center alignment and taper turning. Tailstock locked to bed with hand lever conveniently located at front. Tailstock sleeve operated with large ball-end crank handle, and locked with ball-end lever actuating lock cams. Sleeve machined for No. 2 Morse-taper centers. Centers self-ejecting.

Tool Rest: Lathe equipped with quick-acting, universal tool-rest base, locked to bed by convenient handle at front of base. 4" and 12" tool rests, adjustable in tool-rest base by means of lock screw with ball-end lever.

Accessories: 4" and 12" tool rests. 3" faceplate, drive center for wood, tail center for wood, headstock wrench, Allen wrench and belt for lathe-stand installation.



## Every Feature Designed to Provide Maximum Convenience, Utility, Accuracy, Dependability

In designing this lathe, as with all other Delta tools, every feature was carefully studied in the light of long experience, so that nothing would be omitted that would add to the accuracy or dependability of the lathe or the convenience of the user, and so that no feature would be incorporated that was not dictated by sound engineering. The result is a sturdy, honest machine that will do all the work of much higher-priced lathes, that will give long, economical service, that is simple and convenient to operate and maintain and that represents the very highest value you can obtain for your money anywhere. It is the ideal lathe for the school and professional shop—for the shop of the craftsman who demands good tools at a reasonable price.

## Delta Manufacturing Company

600-634 E. Vienna Avenue

Milwaukee, Wisconsin

For Sale By:

Chas. H. Blockford Mfg. Co.  
424 N. 35th St. West 3710