



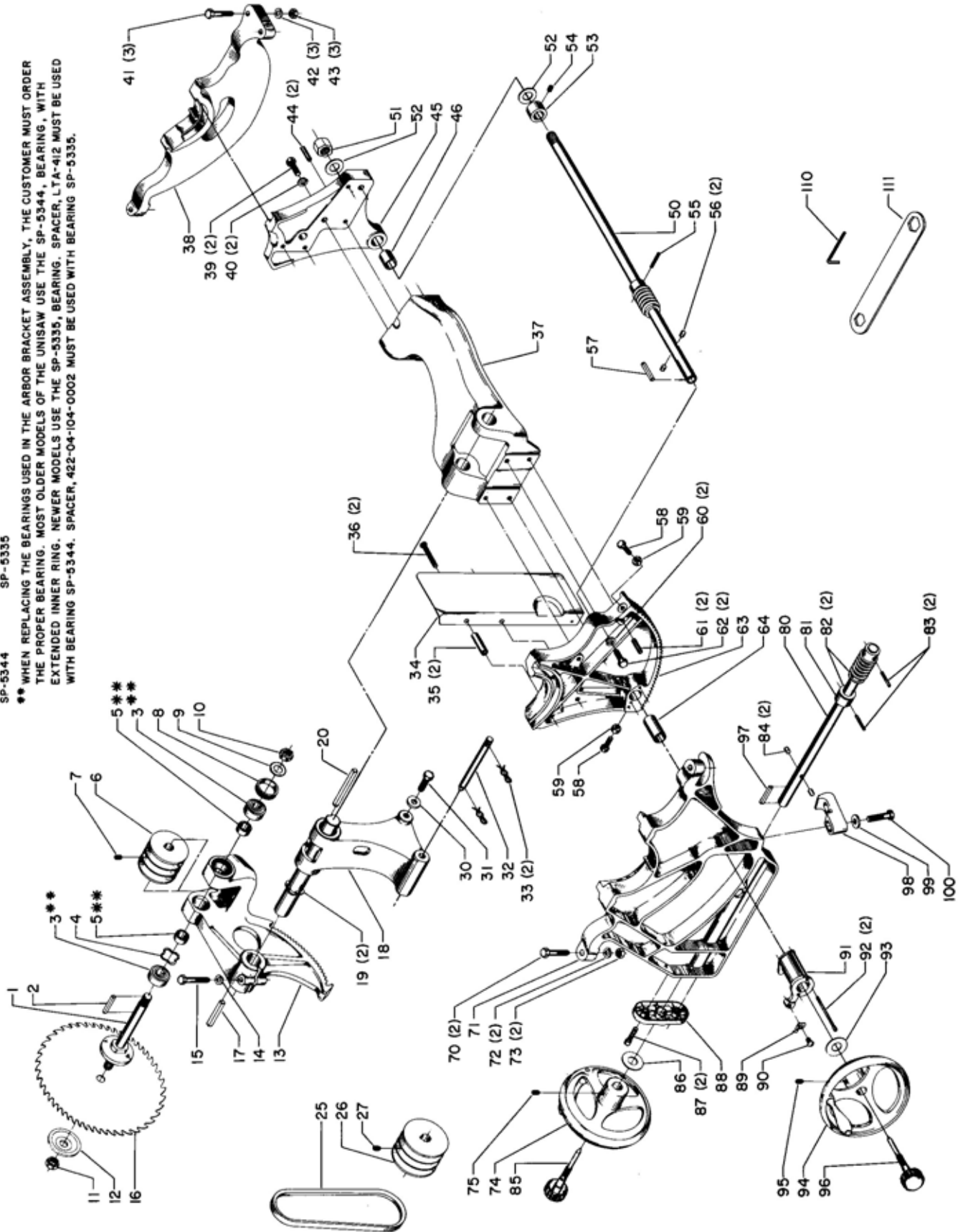
Power Tool Division
Rockwell International

1450, 34-405, 34-450, 34-460,
34-461, 34-466
10" TILTING ARBOR UNISAW

CS-4K
422-04-651-5003
Revised 1-10-75



** WHEN REPLACING THE BEARINGS USED IN THE ARBOR BRACKET ASSEMBLY, THE CUSTOMER MUST ORDER THE PROPER BEARING. MOST OLDER MODELS OF THE UNISAW USE THE SP-5344, BEARING, WITH EXTENDED INNER RING. NEWER MODELS USE THE SP-5335, BEARING. SPACER, LTA-412 MUST BE USED WITH BEARING SP-5344. SPACER, 422-04-104-0002 MUST BE USED WITH BEARING SP-5335.



Replacement Parts

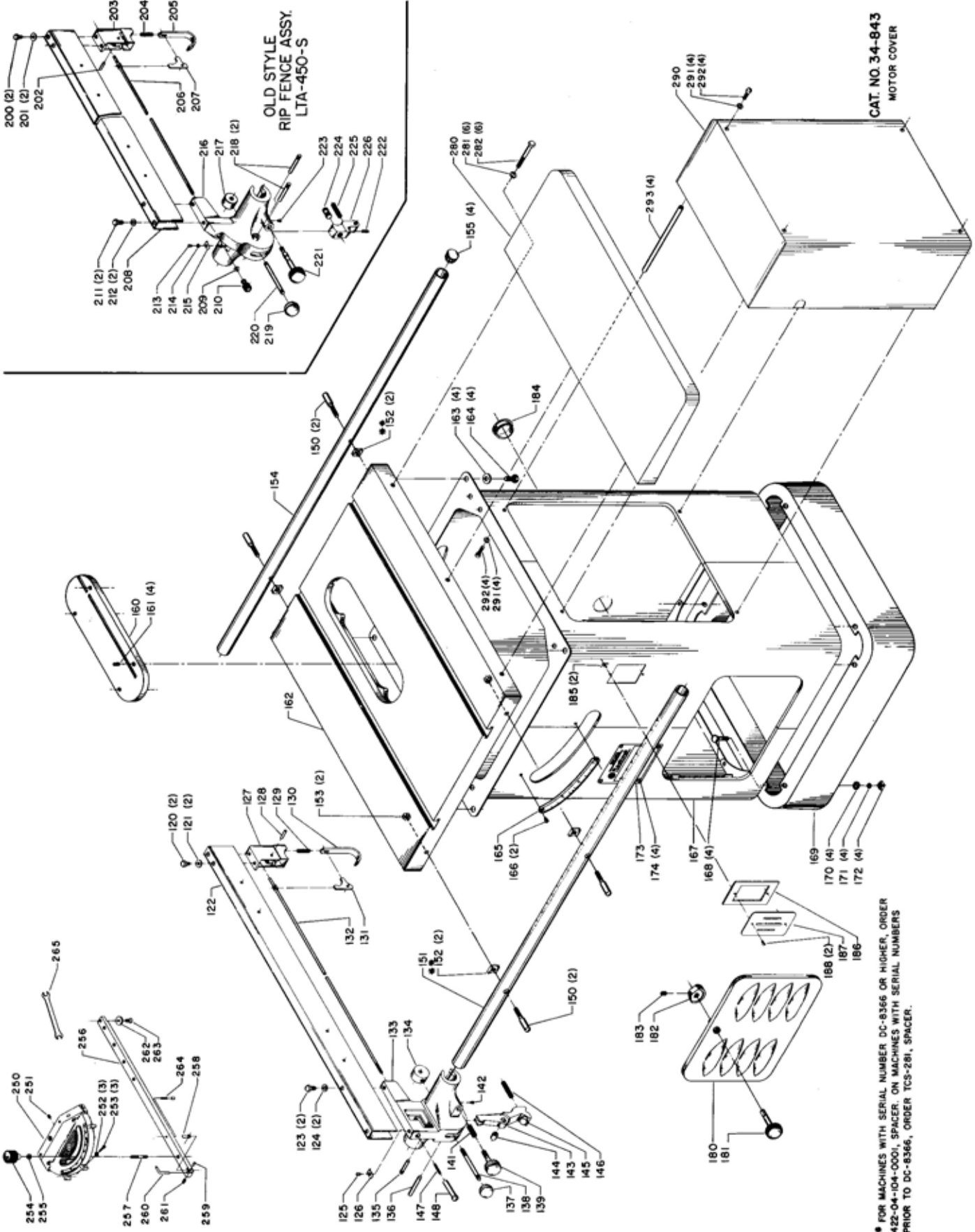
Ref. No.	Part No.	Description	Ref. No.	Part No.	Description
*	LTA-408-S	Arbor Bracket, Consisting of:	50	422-04-406-0001	Raising Shaft w/Worm, Including:
1	LTA-428-A	Arbor and Flange	51	SP-1036	3/4-16 Hex. Nut
2	SP-2650	3/16 x 3/16 x 1-3/8" Key	52	LTA-462	Fiber Washer
** 3	SP-5344	.6693 x 1.5748 x .563 Bearing w/Extended Inner Ring	53	H-5-S	Collar, Including:
** 3	SP-5335	.6693 x 1.5748 x .4724 Bearing	54	SP-201	5/16-18 x 5/16" Hex. Soc. Set Scr.
4	LTA-516	Bearing Load Spring	55	SP-2715	3/16 x 1-1/8" Roll Pin
** 5	LTA-412	Bearing Spacer	56	TAM-181	Lock Pin
** 5	422-04-104-0002	Bearing Spacer	57	SP-2650	3/16 x 3/16 x 1-3/8" Key
6	LTA-560-S	Arbor Pulley, Including:	58	SP-663	5/16-24 x 3/4" Hex. Hd. Cap Scr.
7	0908653	5/16-18 x 3/8 Hex. Soc. Set Scr. w/Nylon Insert	59	SP-1228	5/16-24 Hex. Nut
8	BG-12	Spanner Nut	60	SP-1704	3/8" Lockwasher
9	DP-722	Lockwasher	61	SP-2734	5/16 x 1" Roll Pin
10	BM-23	Bearing Nut	62	SP-642	3/8-16 x 1" Hex. Hd. Cap Scr.
11	BG-23	5/8"-12 Arbor Flange Nut	63	LTA-405-S	Front Trunnion, Including:
12	LTA-411	Arbor Flange	64	LTA-466	Bearing
13	LTA-408-A	Arbor Bracket, Including:	70	SP-682	3/8-24 x 1-1/2" Hex. Hd. Cap Scr.
14	SP-1704	3/8" Lockwasher	71	LTA-403	Front Trunnion Bracket
15	SP-3102	3/8-16 x 1-3/4" Hex. Hd. Cap Scr.	72	SP-1704	3/8" Lockwasher
16	Cat. #34-105	10" Combination Saw Blade	73	SP-1207	3/8-24 Hex. Nut
17	SP-2653	1/4 x 1/4 x 1-15/16" Key	74	LTA-420-S	Handwheel, Including:
18	LTA-409-R	Motor Bracket w/Shaft, Including:	75	SP-201	5/16-18 x 5/16" Hex. Soc. Set Scr.
19	NL-306	Bearing Load Spring	80	LTA-418-R	Tilting Shaft w/Worm, Including:
20	SP-2657	1/4 x 1/4 x 2-15/16" Key	81	LTA-456	Collar
25	Cat. #49-124	Matched Set of Three V-Belts	82	LTA-462	Fiber Washer
26	Cat. #41-644	Motor Pulley, Including:	83	SP-2715	3/16 x 1-1/8" Roll Pin
27	0908653	5/16-18 x 3/8 Hex. Soc. Set. Scr. w/Nylon Insert	84	TAM-181	Lock Pin
30	DDL-174	Special Steel Washer	85	LTA-561-S	Lock Knob
31	SP-664	7/16-20 x 1" Hex. Hd. Cap Scr.	86	LTA-461	Fiber Washer
32	LTA-416	Pin	87	SP-707	5/16-18 x 1" Fil. Hd. Cap Scr.
33	LTA-515	Spring Clip	88	LTA-460	Shield Plate
34	LTA-522	Dust Deflector	89	LTA-429	Pointer
35	LTA-523	Spacer	90	SP-520	5/16-18 x 3/8" Rd. Hd. Mach. Scr.
36	SP-522	5/16-18 x 1-3/4 Rd. Hd. Mach. Scr.	91	LTA-459	Pointer Bracket
37	LTA-407	Yoke	92	0919714	#8-32 x 2" Fil. Head Mach. Scr.
38	LTA-404	Rear Trunnion Bracket	93	LTA-461	Fiber Washer
39	SP-642	3/8-16 x 1" Hex. Hd. Cap Scr.	94	LTA-420-S	Handwheel, Including:
40	SP-1704	3/8" Lockwasher	95	SP-201	5/16-18 x 5/16" Hex. Soc. Set Scr.
41	SP-682	3/8-24 x 1-1/2" Hex. Hd. Cap Scr.	96	LTA-561-S	Lock Knob
42	SP-1704	3/8" Lockwasher	97	SP-2650	3/16 x 3/16 x 1-3/8" Key
43	SP-1207	3/8-24 Hex. Nut	98	LTA-424	Guide Block
44	SP-2734	5/16 x 1" Roll Pin	99	DDL-174	Special Steel Washer
45	LTA-406-S	Rear Trunnion, Including:	100	SP-681	7/16-20 x 1-1/2" Hex. Hd. Cap Scr.
46	LTA-467	Bearing	110	Cat. #194	5/32" Hex. Wrench
			111	1087708	Wrench

NOTE: For 1725 RPM operation, Use the following V-Belts and Motor Pulley.

Cat. #49-291	Matched Set of Three V-Belts
Cat. #34-449	Motor Pulley

* NOT SHOWN ASSEMBLED

** WHEN REPLACING THE BEARINGS USED IN THE ARBOR BRACKET ASSEMBLY, THE CUSTOMER MUST ORDER THE PROPER BEARING. MOST OLDER MODELS OF THE UNISAW USE THE SP-5344, BEARING, WITH EXTENDED INNER RING. NEW MODELS USE THE SP-5335, BEARING. SPACER, LTA-412 MUST BE USED WITH BEARING SP-5344. SPACER, 422-04-104-0002 MUST BE USED WITH BEARING SP-5335.



•• FOR MACHINES WITH SERIAL NUMBER DC-8366 OR HIGHER, ORDER 422-04-104-0001, SPACER, ON MACHINES WITH SERIAL NUMBERS PRIOR TO DC-8366, ORDER TCS-281, SPACER.

Replacement Parts

Ref. No.	Part No.	Description	Ref. No.	Part No.	Description
*	422-04-355-0001	Rip Fence Complete, Consisting of:	*	LTA-481-S	Door Assembly, Consisting of:
120	SP-605	5/16-18 x 1/2" Hex. Hd. Cap Scr.	180	LTA-481-A	Door
121	SP-1604	5/16 x 3/4 x 1/16" Washer	181	LTA-483-S	Door Knob and Stud
122	422-04-343-5002	Fence Body	182	LTA-484	Door Lock Cam
123	SP-677	3/8-24 x 1/2" Hex. Hd. Cap Scr.	183	SP-206	5/16-18 x 5/16" Hex. Soc. Set Scr.
124	SBS-55	25/64 x 11/16 x 1/16" Washer	184	438-01-011-0020	Insulator
125	SP-551	#10-32 x 1/4" Rd. Hd. Mach. Scr.	185	SP-2954	Speed Nut
126	LTA-855	Pointer	186	422-04-116-0001	Gasket
127	TCS-261	Rear Slide Block	187	DP-572	Cover
128	TCS-265	Pin	188	SP-564	#6-32 x 3/8" Rd. Hd. Mach. Scr.
129	LTA-465	Spring			OLD STYLE RIP FENCE
130	TCS-263	Clamp Hook	200	SP-629	5/16-18 x 3/8" Hex. Hd. Cap Scr.
131	TCS-264	Lever	201	SP-1620	11/32 x 11/16 x 1/16" Washer
132	LTA-468	Rod	202	TCS-265	Pin
*	422-04-312-5008	Front Clamp, Consisting of:	203	TCS-261	Rear Slide Block
133	422-04-012-5005	Front Clamp Body	204	LTA-465	Spring
134	422-04-042-5002	Eccentric	205	LTA-850	Rear Clamp Hook
135	422-04-071-5005	Pin	206	LTA-468	Rod
136	422-04-071-5004	Pin	207	TCS-264	Lever
137	SP-3607	Ball Handle	208	LTA-451-S	Fence
138	422-04-111-5002	Clamp Lever	209	SP-1603	1/4 x 9/16 x 3/64" Washer
139	TCS-272-S	Knob and Pinion	210	NCS-272	Knurled Nut
141	928-01-201-5898	Spring	*	LTA-450-R	Fence Block, Consisting of:
142	901-04-160-6218	1/4-20 x 1/4" Soc. Set Scr.	211	SP-677	3/8-24 X 1/2" Hex. Hd. Cap Scr.
143	422-04-327-5002	Front Clamp Shoe, Including:	212	SBS-55	25/64 x 11/16 x 1/16" Washer
144	904-08-021-4550	Rubber Bushing	213	SP-551	#10-32 x 1/4" Rd. Hd. Mach. Scr.
145	422-04-071-0001	Pin	214	SP-1610	13/64 x 3/8 x 1/32" Washer
146	MK-5516	Spring	215	TCS-271	Pointer
147	928-01-021-5801	Spring	216	LTA-450	Front Clamp Body
148	422-04-105-5001	Sleeve	217	LTA-490	Eccentric
150	LTA-455	3/8-24 Special Screw	218	LTA-492	Pin
151	LTA-439	Front Guide Rail	219	NJ-247	Ball Handle
** 152	TCS-281	Spacer (For Machines prior to S/N DC-8366)	220	TCS-270	Clamp Handle Stud
** 152	422-04-104-0001	Spacer (For Machines with S/N DC-8366 or Higher)	221	TCS-272-S	Knob and Pinion
153	SP-1207	3/8-24 Hex. Nut	222	SP-104	1/4-20 x 1/2" Headless Set Scr.
154	LTA-440	Rear Guide Rail	223	SP-569	#8-32 x 3/16" Rd. Hd. Mach. Scr.
155	TCS-319	Plug	224	LTA-489	Clamp Screw
160	Cat. #34-154	Table Insert, Including:	225	LTA-491	Spring
161	901-04-461-5297	1/4-28 x 3/8" Long Lok Scr.	226	LTA-488	Front Clamp Shoe
162	LTA-401	Table	*	Cat. #34-895	Miter Gage, Consisting of:
163	DDL-174	Special Steel Washer	250	NCS-160-A	Miter Gage Body, Including:
164	SP-680	7/16-20 x 3/4" Hex. Hd. Cap Scr.	251	NCS-177	Special Set Screw
165	LTA-427	Indicator Scale	252	NCS-173	Special Nut
166	SP-3000	#6-32 x 1/4" Self-Tapping Scr.	253	SP-723	#8-32 x 1/2" Fil. Hd. Scr.
167	LTA-470-S	Cabinet	254	NCS-164	Lock Knob
168	SP-830	5/16-18 x 1-1/4" Carriage Bolt	255	DSS-79	Fiber Washer
169	1087066	Cabinet Base	256	422-04-004-0001	Bar
&	1087070	Base Dust Port Cover	257	NCS-166	Stud
&	SP-3023	#10-32 x 1/2" Truss Hd. S. Tapping Screw (2 Req'd.)	258	NCS-170	Stop Link
170	SP-1620	11/32 x 11/16 x 1/16" Washer	259	NCS-171	Special Pin
171	SP-1703	5/16" Lockwasher	260	NCS-174	Pointer
172	SP-1303	5/16-18 Square Nut	261	NCS-177	Special Set Screw
173	960-02-012-1428	Nameplate	262	422-04-072-0001	Plate
174	SP-2250	#4 x 3/16" Drive Screw	263	SP-5750	1/4-28 x 5/16" Flat Hd. Mach. Scr.
			264	NCS-168	Special Pivot Screw
			265	Cat. #1552	5/16" Open End Wrench
			280	Cat. #34-545	Side Extension Wings (pair), Including:
			281	SP-1716	7/16" Split Lockwasher
			282	SP-664	7/16-20 X 1" Hex. Hd. Screw
			*** 290	Cat. #34-843	Motor Cover, Including:
			291	SP-1750	5/16" Int. Tooth Lockwasher
			292	SP-724	5/16-18 x 7/8" Fil. Hd. Screw
			293	422-04-104-0003	Spacer

* NOT SHOWN ASSEMBLED
& ITEM NOT SHOWN

*** THIS ACCESSORY IS NOT SUPPLIED WITH THE BASIC MACHINE