

PM-1519

Revised: 8-15-57

17-B: 17" Drill Press Instruction Manual

U.S. Patents No. 2,122,966; 2,202,878; 2,396,733

17" DRILL PRESS Operating and Maintenance Instructions

The 17" drill press is shipped completely assembled. On floor-type drills without raising mechanism in the head, loosen clamp nuts DP-828, raise head to position by sliding upward on the column, then retighten clamp nuts. On drills with raising mechanism in head, loosen clamp bolt on thrust collar below rack and operate ball-crank handle DDL-160-S to feed rack up through head. When rack is through head as far as necessary, re-tighten collar clamp bolt, then loosen the head clamp nuts and operate ball-crank handle to move head upward on the column. By alternately feeding the rack through the head and the head up and down on the column in this manner, the head and the rack can be set in the most convenient manner for the job. It is not necessary to move the rack, once set, except for extreme movements of the head.

POWER REQUIRED

For light shop work up to $\frac{1}{2}$ " in cast iron, a $\frac{1}{2}$ -H.P. motor may be used. For medium duty work a $\frac{3}{4}$ -H.P. motor is recommended. Use only a ball-bearing motor, preferably one with sealed ball bearings. For work up to $\frac{3}{4}$ " in cast iron, and for heavy continuous work a 1-H.P. motor is recommended. The motor should turn in a clockwise direction, viewed from the top of the motor, when installed. Our motors with built-in switches should be installed so that the switch is at the left-hand side as you face the machine. If motor turns the wrong way, reverse its rotation in accordance with the instructions on motor nameplate.

Install the motor pulley with the largest step at the top, and align it carefully with the spindle pulley. The motor bracket is adjustable back and forward for correct belt tension. Longer belt life will be obtained if the tension is not too great.

OPERATING DRILL PRESSES IN GANGS

When a number of drill presses are to be used in gangs, they should be provided with three-phase motors for the following reasons: Three-phase motors will save from 20 to 30 percent of the current required by ordinary single-phase motors, besides delivering more power. Since they have no brushes, commutators, starting switches or short-circuit switches they are practically trouble-free. They are installed on a power line and thus do not flicker lights. A number of drill presses should not be operated with single-phase motors, taking the current from the lighting circuit; in fact, this practice is prohibited by many electric companies.

Three-phase motors, being wound for 220 volts, must be operated from a power line. They should be wired by a licensed electrician and provided with three-phase switches, as they have no built-in switches or extension cords.

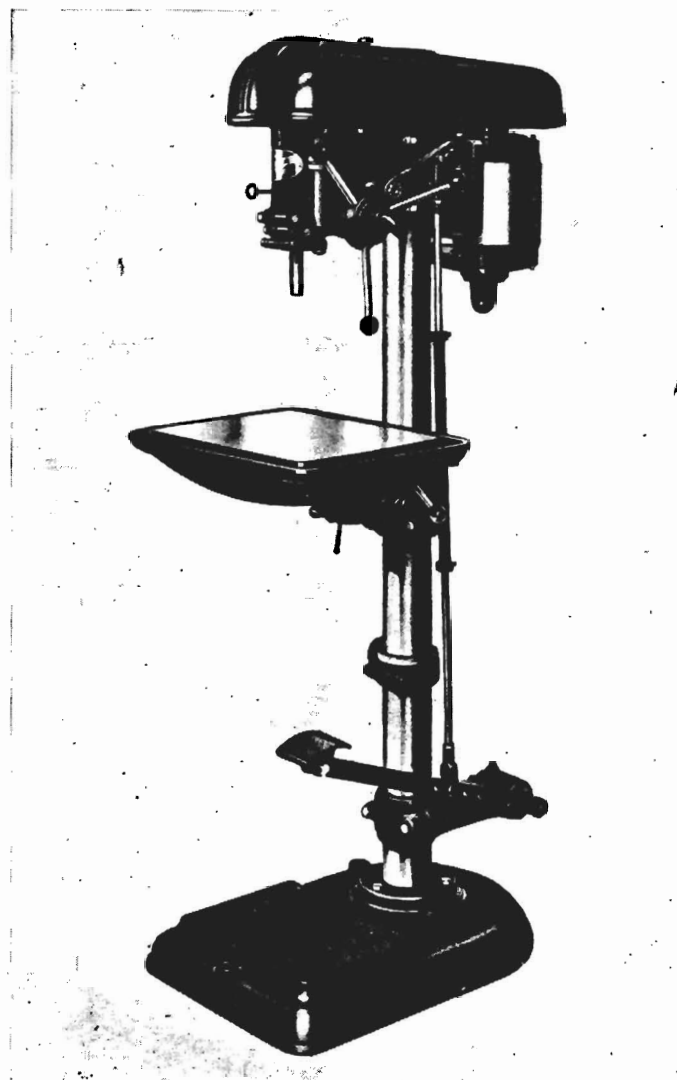


Fig. 1. 17" Drill Press

INSTALLING PRODUCTION TABLE

Production table No. 1372 may be installed on the floor-type machine instead of the regular tilting table. To install, remove index pin DP-666-S and clamp nut and washer SP-1245 and SP-1707, then remove the regular table. Install production table and replace clamp nut and washer and index pin.

CHANGING SPINDLES

Drill presses fitted with No. 2 Morse-taper sockets may be changed to $\frac{1}{2}$ " capacity key-chuck equipment, or vice versa.

To remove the quill, remove knob NJ-220 holding the return spring housing on the left of the head. Loosen the screw holding the depth indicator pointer and turn the pointer down out of the way. Remove the spring housing, carrying the depth scale, the plate covering the spring and the washer inside the plate. Now release the tension on the spindle return spring by turning the worm screw DP-621 (Fig. 3). This will be found in the head at the rear of the spring housing and is turned with a screwdriver. Back the worm screw completely out, when the entire spring in its case may be withdrawn. Quill-pinion shaft DP-618-A (Fig. 3) may then be withdrawn with one hand while holding the quill with the other. Run off the knurled stop nuts DP-629 and withdraw the quill and spindle assembly.

To re-install, insert the quill assembly from the bottom of the head and install the pinion shaft. Install stop-rod bracket, then slip the spring and its casing into the head. Insert the worm screw, and screw up until the proper spring-return tension is obtained. This should be just sufficient to return the quill to the top position; do not make this tension too strong. Replace the spring-housing washer, cover, knob and spring, and set the indicator pointer at zero when the spindle is at the top position. Travel of the quill on standard drill press is 5".

INSTALLING RAISING MECHANISM

Referring to Figs. 3 and 4, loosen the clamp bolts holding table bracket to column and remove bracket. Remove table from bracket. Slide worm-shaft through bearing, keeping the flats to the outside. Push shaft through opposite plain bearing, putting a drop of oil on it first. Put collar on shaft outside of spanner nut and ratchet in place with taper pin. Fasten ball-crank handle in place.

Set compound gear assembly DP-640-F in place to mesh with worm, and slide shaft DP-642 through worm gear and collar into the bearing. Place table bracket in position against column, put clamp cap in place, replace clamp bolts and tighten socket setscrew SP-207 against worm shaft DP-642. Loosen thrust collar DP-678-S, slip safety hook of DP-641-S over clamp collar and thrust bearing as in Fig. 4, then slide rack

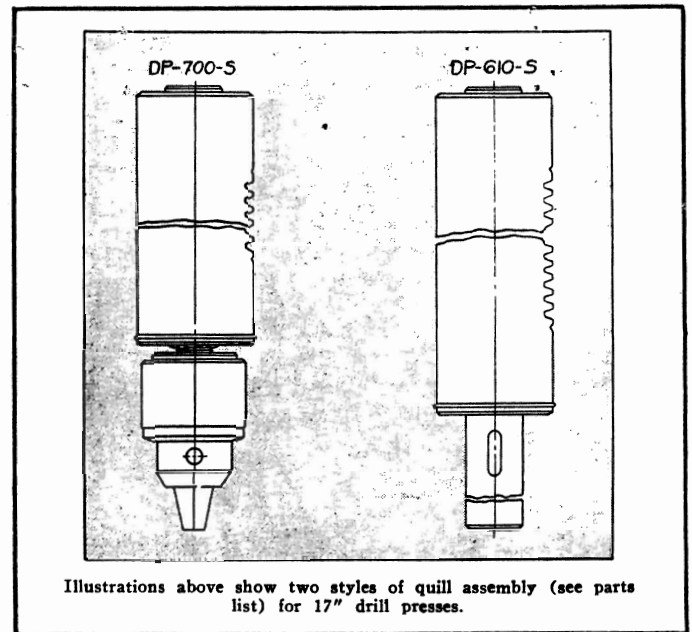


Fig. 2.

DP-641-S through bracket from below. Tighten thrust collar on column.

To remove mechanism, reverse these instructions, removing rack, clamp cap, bracket, worm gear and shaft, worm and shaft in the order named. To install mechanism in head, follow the same instructions, first removing head from column and sliding thrust collar and bearing over the end of the column.

LUBRICATION

The self-sealed ball bearings in the quill and spindle-pulley are packed at the factory with enough lubricant for the life of the bearings, and require no attention. A drop of oil may occasionally be placed on the pinion shaft and quill rack and on the raising-mechanism shafts, as well as on the pivots of the foot-feed mechanism. No other lubrication is necessary.



Rockwell
International

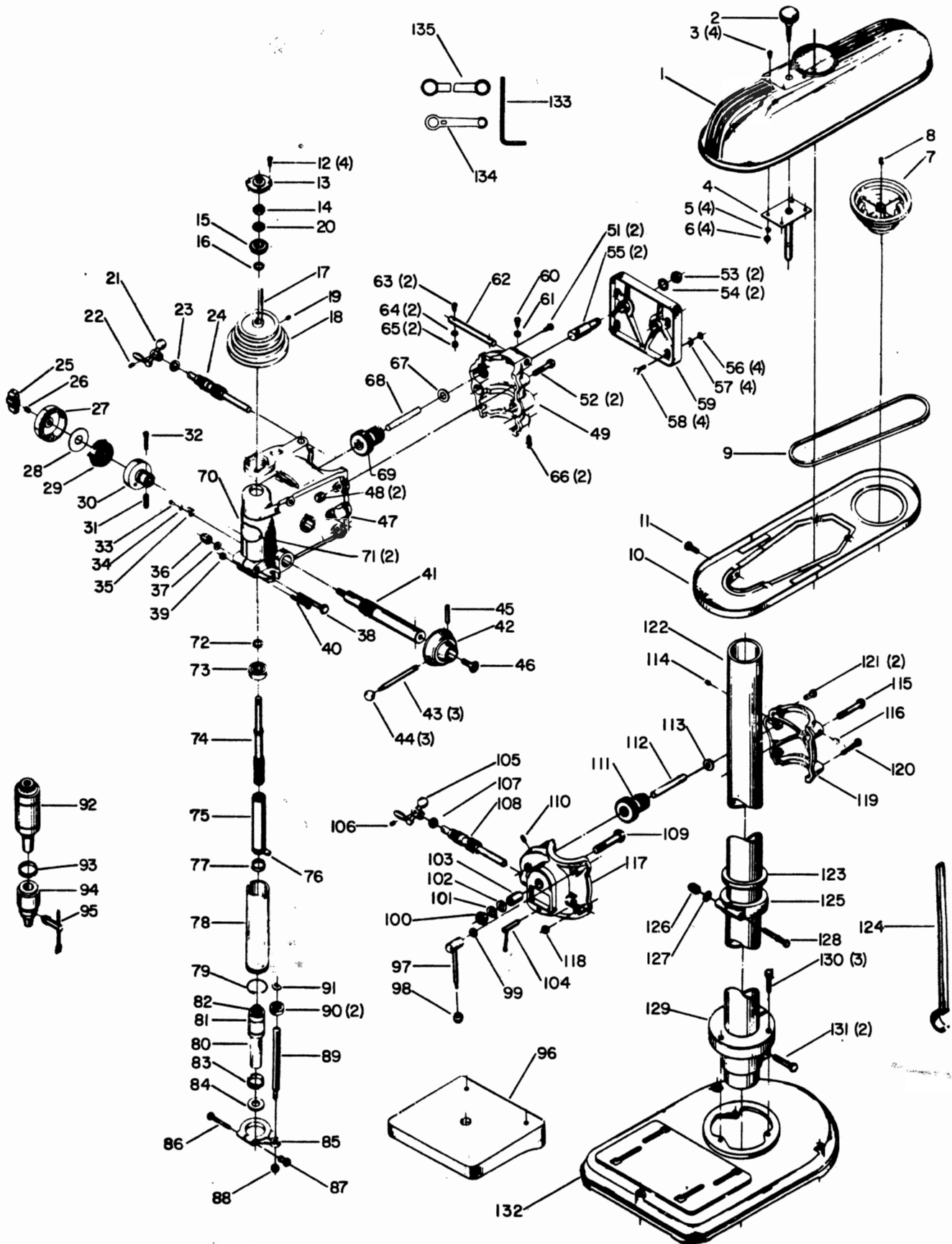
1370, 17-205, 17-206, 17-207

17-208, 17-210, 17-211, 17-212, 17-213

17" DRILL PRESS (old style with DP-600 Z Head Casting)

DP-10

Revised 6-15-84



Replacement Parts

Ref. No.	Part No.	Description	Ref. No.	Part No.	Description
1	400-00-354-5002	Upper Guard	60	901-01-060-0603	5/16-18 X 5/8" Hex Hd. Cap Scr.
2	Cannot Furnish	Pin Assembly	61	904-01-010-1620	11/32 X 11/16 X .0625 Washer
3	901-02-010-0509	1/4-20 X 1/2" Rd. Hd. Scr.	62	402-05-071-5006	Pin for Belt Guard
4	Cannot Furnish	Stud Assembly	63	Cannot Furnish	5/16 X 1" Rd. Hd. Stove Bolt
5	904-02-020-1702	1/4 X 7/16 X 1/16" Lockwasher	64	904-01-010-1620	11/32 X 11/16 X .0625 Washer
6	902-01-120-1034	1/4-20 Hex Nut	65	902-01-010-1300	5/16-18 Hex Nut
7	41-822	1/2" Bore HI-Speed Motor Pulley, Incl:	66	901-04-020-0310	3/8-16 X 5/8" Set Scr.
8	901-04-190-0201	5/16-18 X 5/16" Soc. Set Scr.	67	904-07-010-5575	5/8 X 1 X 1/32" Fiber Washer
7	41-823	5/8" Bore HI-Speed Motor Pulley, Incl:	68	402-05-106-5010	Compound Gear Shaft
8	901-04-190-0201	5/16-18 X 5/16" Soc. Set Scr.	69	402-05-051-5010	Compound Gear
7	41-824	3/4" Bore HI-Speed Motor Pulley, Incl:	70	Cannot Furnish	Nameplate
8	901-04-190-0201	5/16-18 X 5/16" Soc. Set Scr.	71	901-06-110-3000	#6 Rd. Hd. Self-Tap. Scr.
7	41-825	3/4" Bore HI-Speed Motor Pulley, Incl:	72	904-01-030-1645	Special Washer
8	901-04-190-0201	5/16-18 X 5/16" Soc. Set Scr.	73	920-08-040-5344	Ball Bearing
7	41-825	7/8" Bore HI-Speed Motor Pulley, Incl:	74	402-05-106-5007	Spindle
8	901-04-190-0201	5/16-18 X 5/16" Soc. Set Scr.	75	402-05-105-5004	Spindle Sleeve, See Note B
7	41-825	1/2" Bore Slo-Speed Motor Pulley, Incl:	76	927-01-201-3720	Drive Pinion Key
8	901-04-190-0201	5/16-18 X 5/16" Soc. Set Scr.	77	904-15-021-4139	1" Dia. X 1/4" w. Garter Spring
7	Cannot Furnish	1/2" Bore Slo-Speed Motor Pulley, Incl:	78	402-07-077-5001	Quill, See Note B
8	901-04-190-0201	5/16-18 X 5/16" Soc. Set Scr.	79	904-15-021-4138	Garter Spring
7	41-813	5/8" Bore Slo-Speed Motor Pulley, Incl:	80	Use 17-881	Lower Spindle #2 M.T., Incl: (See Note B)
8	901-04-190-0201	5/16-18 X 5/16" Soc. Set Scr.	81	402-07-051-5005	Pinion
7	41-814	3/4" Bore Slo-Speed Motor Pulley, Incl:	82	901-03-010-0750	5/16-18 X 1" Soc. Hd. Cap Scr.
8	901-04-190-0201	5/16-18 X 5/16" Soc. Set Scr.	83	902-07-020-7176	Bearing Closure Nut
7	41-815	7/8" Bore Slo-Speed Motor Pulley, Incl:	84	904-07-061-2942	Leather Shock Ring
8	901-04-190-0201	5/16-18 X 5/16" Soc. Set Scr.	85	402-05-014-5005	Yoke
7	41-815	5/16-18 X 5/16" Soc. Set Scr.	86	901-01-060-0674	5/16-24 X 2-3/4" Hex Hd. Cap Scr.
8	901-04-190-0201	5/16-18 X 5/16" Soc. Set Scr.	87	931-02-141-4089	Special Hex Nut
9	49-051	HI-Speed V-Belt	88	902-01-040-1004	7/16-14 Jam Nut
9	49-025	Slo-Speed V-Belt	89	402-05-108-5001	Stop Rod
10	400-00-354-5002	Lower Guard	90	902-08-061-3079	Knurled Nut
11	901-20-210-3800	5/16-18 X 7/8" Fil. Hd. Scr.	91	904-01-101-4955	Stop Nut Washer
12	901-02-551-2858	#10-32 X 7/16" Fil. Hd. Cap Scr.	92	Use 17-882	Lower Spindle Ass'y, (See Note B)
13	402-05-020-5002	Bearing Cap	93	902-07-020-7176	Bearing Closure Nut
14	902-01-200-9847	Special Nut	94	956-01-011-4153	6A-33 Jacobs Chuck w/Key, See Note B
15	920-08-020-5350	Snap Ring Bearing	95	1200490	Key for Jacobs Chuck
16	904-01-030-1645	Special Washer	96	402-05-091-5001	Tilt Table
17	927-03-010-2661	3/16 X 3/16 X 2" Straight Key	*	402-05-314-5004	Table Bracket Ass'y., Incl:
18	926-06-991-4688	HI-Speed Pulley, Incl:	97	402-05-327-5002	Handle Incl:
19	901-04-190-0201	5/16-18 X 5/16" Soc. Set Scr.	98	931-01-011-3519	Ball
20	904-05-010-6664	19/32 X 1-3/16 X 1/32" Lockwasher	99	904-10-031-3893	Special Washer
18	926-06-991-4686	Slo-Speed Pulley, Incl:	100	902-01-010-1245	3/4-10 Hex Nut
19	901-04-190-0201	5/16-18 X 5/16" Soc. Set Scr.	101	904-02-020-1707	Lockwasher
20	904-05-010-6664	19/32 X 1-3/16 X 1/32" Lockwasher	102	904-01-031-4954	Washer
21	980-05-991-4787	Ball Crank, Incl:	103	402-05-306-5002	Sleeve
22	901-04-150-0206	5/16-18 X 5/16" Soc. Set Screw	104	402-05-371-5002	Index Pin
23	902-07-030-7179	Bearing Closure Spanner Nut	105	980-05-991-4787	Ball Crank, Incl:
24	402-05-406-5008	Worm Shaft Assembled	106	901-04-150-0206	5/16-18 X 5/16" Soc. Set Scr.
25	931-03-011-4097	Handknob	107	902-07-030-7179	Bearing Closure Spanner Nut
26	928-01-021-4125	Spring	108	402-05-406-5008	Worm Shaft Assembled
27	402-05-331-5002	Return Spring Housing Cover Ass'y.	109	901-01-060-0630	3/4-10 X 3-1/2" Hex Hd. Cap Scr.
28	904-01-021-3581	Spacer Disk	110	901-04-150-0205	5/16-18 X 1/4" Hdless. Set Screw
29	928-08-001-4141	Pinion Shaft Return Spring	111	402-05-051-5010	Compound Gear
30	402-05-012-5003	Return Spring Housing	112	402-05-106-5010	Compound Gear Shaft
31	402-05-112-5003	Spring Adjusting Scr.	113	904-07-010-5575	Fiber Washer
32	901-02-051-0701	1/4-20 X 3/4" Fil. Hd. Cap Scr.	114	901-04-190-0207	5/16-18 X 1/2" Soc. Set Scr.
33	901-02-010-0509	1/4-20 X 1/2" Rd. Hd. Scr.	115	901-01-060-0643	1/2-13 X 4" Hex Hd. Cap Scr.
34	904-01-010-1603	1/4 X 9/16 X 3/64" Washer	116	901-04-190-0201	5/16-18 X 5/16" Soc. Set Scr.
35	402-05-075-5001	Indicator Pointer	117	C.F.† Separately	Bracket, Use 402-05-314-5003
36	902-01-040-1004	7/16-14 Clamp Nut	118	902-01-020-5438	7/16-14 Jam Nut
37	904-01-031-2925	29/64 X 3/4 X 1/16" Washer	119	C.F.† Separately	Cap, Use 402-05-314-5003
38	901-01-060-0633	7/16-14 X 3-1/4" Hex Hd. Cap Scr.	120	901-01-060-0637	7/16-14 X 3-3/4" Hex Hd. Cap Scr.
39	902-01-200-9706	1/4-20 Hex Nut	121	901-01-060-0615	7/16-14 X 1-3/4" Hex Hd. Scr.
40	901-02-050-0712	1/4-20 X 2-3/4" Fil. Hd. Scr.	122	17-763	3-1/2 X 60" Column (Floor Model)
41	402-05-406-5006	Pinion, Incl.:	122	17-764	3-1/2 X 38-1/2" Column (Bench Model)
**	928-01-021-3378	Spring	123	920-52-991-3986	Rack Thrust Bearing
**	921-01-010-0028	Ball	124	402-05-351-5003	Rack w/Hook
42	11-969	Hub Ass'y., Incl:	125	402-05-389-5001	Collar Ass'y., Incl:
43	1202603	Stud	126	902-01-040-1004	7/16-14 Clamp Nut
44	931-01-011-3519	Ball	127	904-10-031-2097	Special Washer
45	905-04-041-1983	Pin	128	901-01-060-0631	7/16-14 X 4" Hex Hd. Cap Scr.
46	901-04-260-1523	3/8-24 X 5/8" Thumb Scr.	129	402-07-005-5002	Base Flange
47	Cannot Furnish	Head	130	901-01-060-0668	1/2-20 X 1-3/4" Hex Hd. Scr.
48	902-01-040-1004	7/16-14 Clamp Nut	131	901-01-060-0675	7/16-20 X 3" Hex Hd. Cap Scr.
49	Cannot Furnish	Cap	132	402-07-005-5002	Floor Type Base
51	901-01-060-0615	7/16-14 X 1-3/4" Hex Hd. Cap Scr.	133	Cannot Furnish	5/16" Hex Key Wrench
52	901-01-060-0633	7/16-14 X 3-1/4" Hex Hd. Cap Scr.	134	40-526	Wrench
53	902-01-201-2583	3/4-16 Hex Nut	135	Cannot Furnish	Wrench
54	904-03-020-1753	3/4" Shakeproof Washer	*	NOT SHOWN ASSEMBLED	
55	402-05-071-5004	Stud	**	NOT SHOWN	
56	902-01-010-1300	5/16-18 Hex Nut	†	C.F. = Cannot Furnish	
57	904-01-010-1620	11/32 X 11/16 X .0625 Washer			
58	901-11-020-0806	5/16-18 X 1-1/2" Car. Bolt			
59	Cannot Furnish	Motor Plate			

SERVICE NOTES:

A - These parts as shown are no longer available. In case of replacement of either the upper or lower guard, part no. 400-00-354-5002 must be ordered as a complete guard assembly.

3 - Quill and lower Spindle Assembled use part no. 402-07-377-5001, #2 M.T. and part no. 402-07-377-5002, 1/2" Chuck.



Delta International
Machinery Corp.
246 Alpha Drive
Pittsburgh, PA 15238-2985
(412) 963-2400 Telex: 752931
Easylink: 62431680
Fax: (412) 963-2489

IMPORTANT

THANK YOU . . .

YOUR INTEREST IN DELTA PRODUCTS IS APPRECIATED. THE PRODUCT DATA YOU REQUESTED IS ENCLOSED. SERVICE LOCATIONS ARE LISTED ON THE REVERSE SIDE OF THIS LETTER FOR YOUR CONVENIENCE.

We invite you to call upon our Factory Service Centers and Authorized Service Stations throughout the country for repair service, prices, replacement parts and accessories. When you phone the service center closest to your location, we recommend you have ready the model number and/or serial number of the machine and any part numbers you are interested in ordering. In addition, **DELTA'S MEMPHIS TENNESSEE CUSTOMER SERVICE CENTER** is accessible **TOLL FREE at 1-800/223-7278 or FAX 800/535-6488**. Personnel answering the Toll Free lines will assist you with service referrals, identify and price replacement parts and accessories, and accept C.O.D., Visa, and MasterCard part and accessory orders.

Thank you for the opportunity to service you. We hope Delta machines will continue to bring you satisfaction for many years to come.

***DELTA INTERNATIONAL MACHINERY CORP.
TECHNICAL PUBLICATIONS DEPARTMENT***

NOTE: If you have requested additional information, your inquiry has been forwarded to our closest sales office which will, in turn, contact you through your local Delta dealer to give you any further assistance or the information you require.

Enclosure

Delta maintains a modern, efficient Parts Distribution Center, maintaining an inventory of over 15,000 parts located in Memphis, Tennessee.

Highly qualified and experienced Customer Service Representatives are standing by to assist you on weekdays from 7:00 A.M. to 5:00 P.M. Memphis time.



**MEMPHIS, TN 38118
4290 Raines Road
Phone: (901) 363-8800**

HOTLINE
**800-223-PART
FAX: 800-535-6488**

AUTHORIZED SERVICE STATIONS

In order to promote tool safety, Delta International Machinery Corp. strictly enforces the policy of repairing or replacing any damaged or missing standard safety equipment on machines presented to Delta Authorized Service Centers for service/repairs. Any product which is presented to a Delta Authorized Service Center for repairs which contains missing or damaged standard safety equipment will have that equipment repaired or replaced and the customer will be charged for any such service/repairs. Customers can avoid such charges only if the missing safety component is supplied to the service center at the time of repair.

ALABAMA

Birmingham 35208
Alabama Jack Co., Inc.
1140 5th Avenue North
205-251-8156
Hueytown 35023
Owens Power Tool Service, Inc.
700 Brooklane
205-942-6325
Montgomery 36121
Nor Wood Industries, Inc.
581-A George Todd Drive
205-260-9663
Mobile 36693
Southern Power Tool
3956 Government Blvd.
205-666-3623

ALASKA

Anchorage 99503
Alaska Tool & Equip. Service
3207 Arctic Boulevard
907-562-6151
Fairbanks 99706
Fairbanks Aero Services, Inc.
Box 60590
907-479-6666

ARIZONA

Glendale 83501
Banner Tool Service
6741 N. 57th Avenue
602-842-0800
Mesa 85204
East Valley Tool & Equipment Service
835 East Southern Avenue, #4
602-892-6163
Peoria 85345
Banner Tool Service
8240 W. Jefferson Street
602-486-1629
Phoenix 85014
Glenn's Tool Service
4036 North 13th Way
602-264-6203
Tucson 85711
Tool & Construction Supply, Inc.
4857 East 29th Street
602-745-1100
Tucson 85719
Western Tool Inc.
702 So. Campbell
602-884-0504

ARKANSAS

Ft. Smith 72901
Tool Service Co.
4420 Wheeler Avenue
501-648-3125
Jonesboro 72401
Don's Electric Tool Repair
1801 Parker Rd.
501-931-4634
Little Rock 72202
Electric Tool Service
1419 West 10th Street
501-374-8180
Russellville 72801
C & C Machinery Inc.
2120 E. 2nd Street
501-968-7144
Springdale 72765
Layman's Hardware & Supply Inc.
505 E. Emma Ave.
501-750-9967

CALIFORNIA

Burbank 91504
Rodman & Company
2823 N. San Fernando Road
818-846-9494
City of Industry 91745
Porter-Cable Corporation
1305 John Reed Court
818-333-3566
Concord 94520-5679
California Electric Service
1170-G Burnett Avenue
415-827-1011
Fax: 415-827-5409
Covina 91723-3536
California Electric Service
612 S. Shoppers Lane
818-915-4935
Fax: 818-339-6505
Dublin 94568-2811
California Electric Service
6759 Sierra Court, Suite B
415-551-3390
Fax: 415-551-3392

Eureka 95501
Electric Tool Co.
2810 Park St.
707-442-4267
Fontana 92335
California Electric Service
9744 Sierra Avenue
909-355-2500
Fresno 93703
R & R Machinery & Electric Inc.
1919 E. Home Avenue
209-233-1213
Fullerton 92631
California Electric Service Center
1208 E. Ash Avenue
714-870-0900

Huntington Beach 92649
Modern Tool Service
15561 Product Lane Unit D-6
714-898-3425

Los Alamitos 90720-3958
California Electric Service
11284 Los Alamitos Blvd.
213-430-2668
Fax: 213-598-8726

Los Angeles 92203
Minit Tool Company
3026 E. Olympic
213-264-7006

Mission Viejo 92691-3128
California Electric Service
23725 Via Fabricante, Unit B
714-586-9440
Fax: 714-586-9514

Modesto 95351
Stanislaus Electric Mtr. Works
504 River Road
209-523-8269

National City 92050
Natl. Tool & Machy. Repair, Inc.
241 W. 35th St. STE D
619-422-8665

North Hollywood 91605
Bucknall Power Tool Service
11910 Vose Street
818-765-0228

Oakland 94606
California Electric Service, Inc.
1143 E. 12th Street
415-834-1050
Fax: 415-836-1125

Pasadena 91107-3785
California Electric Service
2594 E. Colorado Blvd.
818-792-3194
Fax: 818-792-0511

Redding 96002
Electric Tool and Motor
915 Wall Street #1
916-222-1131

Sacramento 95814-6784
California Electric Service
1821 "Q" Street
916-443-5711
Fax: 916-443-4092

Sacramento 95814
Construction Industry Service Co.
1211 C Street
916-444-2525

Sacramento 95826
Valley Tool Repair
4131 B. Power Inn Road
916-737-6300

San Bernardino 92408
Battels Hardware & Tool Co.
433 S. Waterman Avenue, Suite H
909-886-1284

San Carlos 94070-4168
California Electric Service
990 Industrial Road, Suite 102
415-593-6696
Fax: 415-593-6698

San Diego 92104-1593
California Electric Service
3430 El Cajon Blvd.
619-283-6488
Fax: 619-281-3479

San Francisco 94103-4488
California Electric Service
1090 Bryant Street
415-431-8494
Fax: 415-431-9207

San Jose 95126-3154
California Electric Service
783 The Alameda
408-295-1722
Fax: 408-295-8451

San Leandro 94577
Porter-Cable Corporation
3039 Teagarden Street
P.O. Box 1913
510-357-9762

San Marcos 92069
Pro-Tek Tool Repair
215 Pacific Street, #111
619-471-4800

Santa Ana 92707-2850
California Electric Service
2025 S. Main Street
714-641-0529
Fax: 714-641-2947

Santa Barbara 93101
Buena Tool Co.
433 Laguna Street
805-963-3885

Santa Rosa 95401
Acme Electric Tool Repair
742 Wilson Street
707-546-5862

Santa Rosa 95403
H & V Tool Repair
1808 Empire Industrial Court #D
707-528-1111

Simi Valley 93063
Simi Tool Repair
2512 Tapo Street
805-584-8138

Temecula 92390-5623
California Electric Service
41715 Enterprise Circle North
909-695-5445

Torrence 90502
Universal Tool Service
21804 S. Vermont Avenue
310-328-6472

Van Nuys 91411-1018
California Electric Service
14753 Oxnard Street
818-997-8855
Fax: 818-997-3047

Whittier 90602
Battels Hardware & Tool Co.
13238 E. Whittier Blvd.
310-698-3714

W. Los Angeles 90064-2110
California Electric Service
2314 S. Westwood Blvd.
213-475-2532
Fax: 213-475-2844

W. Los Angeles 90064-2110
California Electric Service
2314 S. Westwood Blvd.
213-475-2532
Fax: 213-475-2844

COLORADO

Avon 81620
Tool Clinic
41000 Highway 6
303-949-6282

Colorado Springs 80219
Schlosser Tool and Machinery
3960 Sinton Road
719-636-1311

Denver 80204
Porter-Cable Corporation
2561 West 8th Ave.
303-892-6113

Denver 80219
Schlosser Tool & Machinery
301 Bryant Street
303-922-8244

Grand Junction 81501
Professional Tool Service, Inc.
2420 E. Main
303-245-3158

CONNECTICUT

Hartford 06106
Utility Electric Service, Inc.
53 Main Street
203-246-7271

Oakville 06779
Watertown Tool Supply
28 Main Street
203-596-1344

DELAWARE

New Castle 19720
Tri-State Tool Repair, Inc.
19 E. Commons Blvd., Unit 2
302-322-9966

New Castle 19804
Holloway Bros.
19 E. Commons Blvd.
302-322-5441

FLORIDA

Ft. Lauderdale 33334
Master Repair Inc.
4107 N.E. 6th Avenue
305-566-5833

Ft. Myers 33905
Power Tool Repair of Ft. Myers
9950 Orange River Blvd.
813-694-6058

Gainesville 32609
Florida Fastener and Tool Co., Inc.
2826 N. Waldo Road
904-377-4587

Hialeah 33014
Porter-Cable Corporation
16373-75 NW 57th Ave.
305-624-2523

Jacksonville 32205
North Florida Machinery & Tool Repair
284 S. Edgewood Ave.
904-387-4455

Orlando 32806
S-Tek Power Tools, Inc.
3434 South Orange Avenue
407-851-5642

Orlando 32807
Florida Electro Mechanical Inc.
429C Gaston Foster Road
407-282-5367

Pensacola 32505
L.C. Electric Motor Service
117 Industrial Blvd.
904-476-7655

Riviera Beach 33404
3706 E. Industrial Way
407-848-4320

Tampa 33609
Porter-Cable Corporation
4538 W. Kennedy Blvd.
813-877-9585

West Palm Beach 33413
Reliable Tool Service Inc.
6533 Southern Blvd., Bldg #3, Bay #3
407-689-1676

GEORGIA

Augusta 30901
Tool Service Center
Box No. 1488
302 Walton Way
404-742-4803

Conyers 30207
Bucks Machinery Co.
1299 Norton Road, N.E.
404-483-7190

Morrow 30260
Porter-Cable Corporation
1286C Citizens Parkway
404-961-0900

Savannah 31402
Morgan's
110 Ann Street
912-234-2271

HAWAII

Hilo 96720
Hawaii Planing Mill Ltd.
380 Kanoalehua Avenue
808-935-0875

Honolulu 96819
A.L. Kilgo Co., Inc.
180 Sand Island Road
808-832-2200

Honolulu 96819
Slim's Power Tools, Inc.
1626 Republican Street
808-841-0902

Honolulu 96817
Inter-Island Solar Supply
345 N. Nimitz Hwy.
808-523-0711

Kahului 96732
Maui Power Tool Service
251-H2 Lalo Street
808-877-3440

Wailuku 96779
Slim's Power Tools, Inc.
864 Alua Street
808-242-7878

IDAHO

Boise 83705
Air Equipment Company
2350 South Orchard Street
208-342-2464

Boise 83706
K.C. Supply Co.
5103 Irving Street
208-375-1313

Coeur d'Alene 83814
Coeur d'Alene Tool
451 Cherry Lane & Hwy 95
208-667-1158

Idaho Falls 83403
Rossiers Electric Motor
1501 South Capital Avenue
208-529-3665

Twin Falls 83301
Ellis Repair
2380 Kimberly Road
208-734-4400

ILLINOIS

Addison (Chicago) 60101
Porter-Cable Corporation
311 Laura Drive
708-628-6100

Lombard 60148
Berlands House of Tools
600 Oak Creek Drive
708-620-0026

Mt. Vernon 62864
Holz Tool Supply
1306 Salem Road
618-242-4676

North Pekin 61554
Central Tool & Equipment
Div. A & I Supply
97 Highway Blvd.
309-382-2400

Springfield 62702
James Machinery
223 N. MacArthur
217-522-9115

INDIANA

Elkhart 46516
Thunander Corporation
21861 Protecta Dr.
219-295-4131

Evansville 47710
Brown & Hubert
(Division of Lensing Wholesale)
306 N. 7th Avenue
812-425-9049

Evansville 47711
Tri State Repair Service
1327 N. Fares
812-464-9341
607-729-5287

Fort Wayne 46808
Merrick Evans Inc.
2116 W. Coliseum Blvd.
219-482-4822

Goshen 46526
C & L Electric Motor Repair
1402 Chicago Avenue
219-533-2643

Indianapolis 46241
Macco Equip. Co., Inc.
3129 Kentucky Avenue
317-248-1444

Topeka 46571
Scarlett Machinery of Indiana
8035 W. 400S
219-593-2319

Warsaw 46580
Warsaw Tool Supply
113 W. Market St.
219-269-2999

Warsaw 46580
Warsaw Tool Supply
113 W. Market St.
219-269-2999

IOWA

Cedar Rapids 52404
Puckett Tool & Fastener
410 1st Avenue NW
319-363-2211

Des Moines 50309
Puckett Electric Tools, Inc.
841 11th Street
515-244-4189

Hiawatha 52233
Janda's Tool Center
754 N. Center Point Road
319-393-4740

Iowa City 52240
Contractor's Tool
1430 Waterfront Drive
319-338-1121

KANSAS

Dodge City 67801-0179
Southwind Supply
1601 W. Frontview
316-225-4384

Manhattan 66502-9602
J & H Mowers & More Inc.
1616 Recreation Drive
913-537-4199

Overland Park 66214
Overland Tool
9119 Barton
913-599-4044

AUTHORIZED SERVICE STATIONS (continued)

Salina 67401
Mid Kansas Tool Repair
314 W. Cloud
913-825-6287

Wichita 67213
Richmond Electric Co.
911 Maple
316-264-2344

KENTUCKY

Bowling Green 42103
Hudson Tool & Equip. Ctr.
915-D Lovers Lane
502-781-6999

Lexington 40505
Kwik-Set Fasteners, Inc.
1151 Commercial Drive
606-252-7518

Louisville 40206
Bargain Supply Company
844 E. Jefferson Street
502-582-6651

Louisville 40217
Tool Repair Service
1200 Goss Avenue
502-635-6888

LOUISIANA

Alexandria 71301
John W. Ward Hardware
1743 Lee Street
318-442-7702

Baton Rouge 70806
Baton Rouge Rental Service
5101 Government Street
504-924-2959

Metairie 70011
R.J. Marchand Contr. Spec., Inc.
P.O. Box 8148
3515 Division Street
504-888-2922

New Orleans 70153-3432
Beerman Precision, Inc.
P.O. Box 53432
4206 Howard Avenue
504-486-9391

Shreveport 71101
McClamroch Machinery
939 Louisiana Avenue
318-222-9249

MAINE

Bangor 04401
N.H. Bragg & Son
Box 927, 92 Perry Rd.
207-947-8611

Portland 04104
M and W Tool Service
38 Portland Street
207-772-2057

MARYLAND

Baltimore 21201
Porter-Cable Corporation
7397 Washington Blvd., Suite #102
410-799-9394
Fax: 410-799-9398

Baltimore 21201
*Skarie, Inc.
707 N. Howard St.
410-728-6000

Baltimore 21237
State Saw & Machinery
8220-22 Pulaski Highway
410-686-7300

Cumberland 21502
Allegheny Motor & Pump Service
150 Winowest Street
301-777-0340

Delmar 21875
Atlantic Motor Service
8972 By-State Blvd.
410-896-3732

Kensington 20895
Space Electronic & Mechanic
10710 Vaughn Street
301-949-2922

Westminster 21157
Summers Service Co.
R2469 Sykesville Road
410-876-3216

MASSACHUSETTS

Fall River 02721
Burns, Inc.
350 M.S. Bishop Blvd.
617-675-0381

Franklin 02038
Porter-Cable Corporation
101-E Constitution Blvd.
508-520-8802
Fax: 508-528-8089

Springfield 01105
Saw Center
472 Main Street
413-734-2045

MICHIGAN

Alpena 49707
Alpena Electric Motor Service
M-32 West, Box 565
517-354-8780

Charlotte 48813
Johnson's Workbench
563 E. Cochran
517-543-2727

Escanaba 49829
Bosk Tool Service
918 North Lincoln Road
906-789-1112

Gaylord 49735
Graham Motor & Generator Service Inc.
977 N. Center
517-732-5005

Gladwin 48624
*Tool Haus
630 N. Silver Leaf
517-426-4549

Grand Rapids 49501
Monitor Machinery Co.
315 Commerce S.W.
616-458-1890

Grand Rapids 49504-3458
1184 Wilson Ave., N.W.
616-791-4760

Kalamazoo 49001
Kalamazoo Electric Motor Service
658 E. Vine Street
616-345-7802

Kingsford 49801
Northern Tool & Supply, Inc.
1021 Pyle Drive
906-774-3991

Lansing 48910
Denstaedt's Hardware
3709 S. Cedar
517-882-4971

Ludington 49431
Carrier Electric Motor Repair Inc.
5608 W. 6th Street
616-845-5097

Muskegon 49444
*Atlas Equipment & Supply
2652 Wood Street
616-733-1814

Petoskey 49770
Ed's Electric Appliance Service
3924 Charlevoix Rd.
616-347-9599

Riverside 49084
Riverside Electric Service
3864 Riverside Road
616-849-1222

Traverse City 49684
Graham Motor & Generator Service Inc.
1131 Hastings
616-947-5824

Troy 48083
Porter Cable Corporation
1355 Combermere
810-597-5000

MINNESOTA

Duluth 55802
Acme Electric Co.
701 Mike Colialillo Drive
128-628-1027

Minneapolis 55429
Porter-Cable Corporation
4315 68th Avenue North
612-561-9080

MISSISSIPPI

Hattiesburg 39401
The Tool Center
5071 Highway 42
601-544-4538

Hattiesburg 39404
Mitchell Power Tool Service
2000 Byron Street
601-264-3308

Jackson 39202
Fiannigan Electric Co., Inc.
1820 S. West Street Ext.
601-354-2756

MISSOURI

North Kansas City 64116
Porter-Cable Corporation
1141 Swift Avenue
P.O. Box 12393
816-221-2070

St. Louis 63119
Porter-Cable Corporation
7574 Watson Road
314-968-8950

Springfield 65802
Middle Earth Tool Repair, Inc.
306 No. National
417-831-0954

MONTANA

Billings 59101
Allen's Electric Tool Repair
115 5th Street, W.
406-248-3865

Black Eagle 59414
Mosch Electric Motors
2513 17th Street North East
406-453-2481

Bozeman 59715
*Owenhouse Hardware
36 E. Main
406-587-5401

Missoula 59801
City Electric
Electro Service Center Div.
101 S. Catlin Street
406-549-4115

Missoula 59801
Montana Tool Co.
1908 North Ave. West
406-721-6425

Whitefish 59937
Northwest Tool Repair
6466 Highway 93 South
406-862-6275

NEBRASKA

Lincoln 68504
Lincoln Tool Service Center
3535 North 40th Street
402-464-1157

Lincoln 68521
Tool Hospital
1720 Adams Street
402-435-2996

Omaha 68127
Thacker Electric
8507 I Street
402-592-9433
NAT WATS 800-678-7604

Omaha 68127
Tool Hospital
4630 So. 85 Street
492-592-5220

NEVADA

Las Vegas 89103
E & M Industrial Hardware
3725 West Russell Rd.
702-736-6102

Las Vegas 89109
Tool Service, Inc.
3229 Industrial Road
702-734-9161

Las Vegas 89118
Service Select Power Tool Repair
5720-A S. Valleyview Blvd.
702-739-1939

Las Vegas 89119
A-1 Equipment & Tool Repair
2520 E. Sunset Road
702-261-9680

Sparks 89434
Sierra Supply, Inc.
1830 E. Lincoln Way
702-353-3333

NEW HAMPSHIRE

Brentwood 03833
Brentwood Machine Sales Inc.
Building #313 - Rte #125
603-679-8452

Keene 03431
Hamshaw Lumber
3 Bradco Street
603-352-6506

Nashua 03061
Hammar Industrial
175 Amherst St.
P.O. Box 1209
603-882-5161

NEW JERSEY

Roselle 07203
Tool & Machinery Service, Inc.
419 East 1st Avenue

Somerville 08876
Butensky Services Co.
10 County Line Road, Suite 7
908-707-0912

Albuquerque 87107
Martin Saw and Tool
3421 Vassar N.C.
505-888-1675

Farmington 87401
Western Tool Crib
2601 East Main
505-325-4543

NEW YORK

Albany 12202
R. B. Wing & Son Corp.
460 South Pearl Street
518-563-4161

Albany 12206
Albany Burner Control, Inc.
20 Colvin Avenue
518-459-8856

Amherst 14226
*Phillips Bros. Supply Inc.
2525 Kensington Avenue
716-839-4800

Buffalo 14210
S & S Electric Repair Shop Inc.
2470 Seneca Street
716-823-1232

Commack 11725
*County Power Tool Service, Inc.
237 Commack Rd.
516-499-5666

Flushing 11365
Porter-Cable Corporation
175-25 Horace Harding Expwy.
718-225-2040

Glens Falls 12801
J.E. Sawyer
64-90 Glen Street
518-793-4104

Hunter 12442
Windham Equipment
Rt. 296 & 23 C
Beaches Corners
518-263-4577

Kingston 12401
Miron Bldg. Products, Inc.
C.P.O. Box 1598
Rt. #9W North
914-336-6000

Peekskill 10566
Peekskill Electric Motor
13 South Broad St.
914-737-4141

Port Chester 10573
Palham Tool Co.
21 Abendrough Avenue
914-937-1771

Rochester 14608
Jackson Saw & Knife Co.
517 State Street
716-546-7485

Rochester 14608
O. G. Schwarz, Division of Hanes
Supply, Inc.
430 Atlantic Avenue
716-482-9282

Southampton 11968
Richards Tool and Motor Repair
County Road 39 & N. Main Street
516-283-5130

Syracuse 13210
Syracuse Industrial Sales
713 E. Fayette Street
315-478-5751

Uniondale 11553
*Enterprise Machinery Co., Inc.
825 Nassau Road
516-485-2804

Utica 13502
McQuade and Bannigan
1300 Stark Street
315-724-7119

Vestal 13850
Cascade Electric Inc.
416 Commerce Rd.
607-729-5278

Watertown 13601
McQuade & Bannigan
124 Murroch Circle
315-788-2612

Wilmington 28405
M.F. McLean Enterprises
Rt. 6, Box 97
Old Wrightsville Road
910-343-1775

Winston-Salem 27106
Piedmont Power Mach. Srv. Inc.
4305J Enterprise Drive
910-759-2022

NORTH DAKOTA

Bismark 58501
Acme Electric Motor, Inc.
1009 Basin Avenue
701-258-1267

Dickinson 58601
Fix It Shop
316 21st Street East
701-225-0766

Fargo 58103
Acme Electric Motor, Inc.
920 36th St., S.W.
701-235-8060

Grand Forks 58201
Acme Electric Motor, Inc.
1705 13th Avenue North
701-746-6481

Minot 58701
Acme Electric Motor, Inc.
525 20th Avenue S.E.
701-839-2263

OHIO

Barberton 44203
Viking Akron Tool & Supply Co.
2915 New Park Drive
1-800-362-0585
216-753-1063

Cincinnati 45210
Cincinnati Electric Repair
2023 Elm St.
513-621-2183

Cincinnati 45215
Pro Tool Service Inc.
1125 Glendale-Milford Road
513-772-1490

Columbus 43212
*Columbus Hardware
944 W. 5th Avenue
614-294-8665

Columbus 43214
Porter-Cable ACorporation
4560 Indianola Avenue
614-263-0929

Alpha (Dayton) 45301
Authorized Tool Service Co.
676 Orchard Lane
P.O. Box 5
513-429-5593

Hartsville 44632
Hartville True Value
940 W. Maple Street
216-877-3631

Holland 43528
Power Tool Sales & Service
6713 Angola Road
419-868-8665

Lima 45801
Lima Armature Works
142 E. Pearl St.
419-222-4010

North Canton 44720
N. Canton Repair Shop
1555 No. Main
216-499-3529

Toledo 43606
Power Tool Sales & Service
2934 Douglas Road
419-473-0962

Toledo 43613
Electric Tool & Equipment
3156 Upton Avenue
419-474-7537

Valley View 44125
Porter-Cable Corporation
Sweet Valley Business Park
Unit #18
216-447-9030

West Milton 45383
Conken Equipment Co.
4950 Frederick Garland Road
513-698-3363

Youngstown 44515
Stambaugh Thompson
3754 Hennicks Road
216-792-9071

OKLAHOMA

Enid 73701
Enid Electric Motor
1406 N. 4th
405-234-8622

Oklahoma City 73109
Steve's Wholesale
2423 S. Walker
405-631-0352

*IND. MACHINERY SERVICE

AUTHORIZED SERVICE STATIONS (continued)

Oklahoma City 73126
Whitton Supply Co.
1419 W. Reno
405-236-5561

Tulsa 74101
Wesche Company
P.O. Box 217
2005 East 7th Place
918-583-7551

Tulsa 74115
Steve's Wholesale Dist., Inc.
5342 E. Admiral Place
918-834-0991

OREGON

Eugene 97402
Jim's Tool Service
515 Wilson Street
503-344-1243
Fax: 503-344-1513
Toll Free: 1-800-327-2033

Grants Pass 97526
Machine Masters
508 N.E. "F" Street
503-479-8876

Klamath Falls 97601
Quality Tool Repair
836 Richmond Street
503-883-5870

Medford 97501
Precision Power Tool Repair Inc.
2919 N. Pacific Highway
503-770-5541

Portland 97202
Professional Power Tool Repair Inc.
2506 S.E. 8th Ave.
503-234-3734

Portland 97212
Continental Machine & Tool Inc.
51 N.E. Hancock
503-288-6888

Redmond 97756
Dave's Tool Repair
2392-5 S. Highway 97
503-548-0510

PENNSYLVANIA

Allentown 18103
Curio Electric Repair
825 South 5th
215-432-9923

Bellefonte 16823
*Triangle Bldg. Supply & Services
1076 E. Bishop St.
814-355-5885

Erie 16510
Erie Power Tool Service
2920 Buffalo Road
814-899-6419

Harrisburg 17109
Stationary Equipment Sales & Service
P.O. Box 10242
Rear 3605 Ridgeway Rd.
717-545-8043

Kingston 18704
Total Services & Systems, Inc.
166 W. Union Street
717-287-2121

Lancaster 17601
Woodworker's World, Inc.
1509 Litz Pike
717-299-5264

Monroeville 15146
Professional Tool Service
700 Seco Road
Monroeville Industrial Park
412-373-7440

Philadelphia 19107-2375
Ideal Tool & Equipment Service
140 N. 10th Street
215-925-0672

Philadelphia 19154
Porter-Cable Corporation
12285 McNulty Road
215-677-7800
Fax: 215-677-9908

Slatington 18080
Doward's Electric
4711 Main Street
215-767-8148

Williamsport 17701
*Hernance Machine
First & Campbell Street
717-326-9156

York 17402
General Tool & Repair, Inc.
2449 S. Queen St.
717-741-8592

SOUTH CAROLINA

Columbia 29203
Mann Electric Repair Co.
3600 Main Street
803-252-7777

Greenville 29609
Tool Shed
901 Pointsett Highway
803-233-6185

Mt. Pleasant 29464
Royal Ace Hardware
884 Ben Sawyer Blvd.
803-884-2551

Myrtle Beach 29577
Coastal Elec. & Rewinding
718 8th Avenue N.
803-448-3586

Spartanburg 29302
Cash Supply
113 Country Club Rd.
803-585-9326

SOUTH DAKOTA

Rapid City 57702
Stan Houston Equipment Co.
1210 Deadwood Avenue
605-348-1155

Sioux Falls 57702
Stan Houston Equip. Co.
501 S. Marion Road
605-336-3727

TENNESSEE

Chattanooga 37412
F & D Tool Service and Supply
4121 Ringold Road
615-698-6454

Jackson 38301
Smith Tool Service
908 S. Highland Avenue
901-427-4012

Jamestown 38556
Kirby's Fix-It
P.O. Box 147
120 N. Norris
615-879-7414

Knoxville 37914
Adrian Machine Tools
2900 Thorn Grove Pike
615-522-9991

Knoxville 37918
Automated Controls Technology, Inc.
4821 N. Broadway
615-688-3574

Memphis 38115
Bird Fasteners, Inc.
6920 Winchester Rd., #102
901-366-1748

Nashville 37210
Allied Tool Repair
1005 Second Ave. S.
615-242-8026

Nashville 37210
Power Tool Service of Nashville, Inc.
1106 Elm Hill Pike
Suite #130
615-255-8227

TEXAS

Abilene 79604
Abilene Lumber Co., Inc.
2025 Industrial Blvd.

Amarillo 79107
Tascosa Tool Service
306 N. Fillmore
806-373-3474

Austin 78722
Hamilton Electric Works Inc.
3800 Airport Blvd.
512-472-2428

Austin 78758-5498
The Tool Box
9906A Gray Boulevard
512-836-5483

Corpus Christi 78405
Corpus Christi Power Tool & Repair
3701 Agnes
512-883-1117

Corpus Christi 78405
Otto Dukes Machinery Co.
2588 Morgan Street
512-883-0921

Dallas 75220
Air & Electric Tool Co.
2326 Myrtle Springs
214-869-3277

Dallas 75220
Porter-Cable Corporation
10720 N. Stemmons Freeway
214-353-2996

El Paso 79902
Schlosser Tool & Machinery
1505 Wyoming
915-544-8665

El Paso 79905
C.L. North Co.
123 Chelsea Street
914-772-1469

Ft. Worth 76110
Air & Electric Tool Co., Inc.
3301 South Grove
817-921-0231

Houston 77008
*Circle Saw Builders' Supply
2510 Ella Boulevard
713-864-8444

Houston 77055
Porter-Cable Corporation
West 10 Business Center
1008 Wirt Road
Suite 120
713-682-0334

Longview 75606
Eastex Welding
Box 3223
1232 W. Marshall
214-758-7327

Lubbock 79405
Lubbock Electric Co.
1108 34th Street
806-744-2336

Lubbock 79412
Caprock Equipment Service & Supply
2112 50th St.
806-747-9177

Lufkin 75901
Maddux Building Materials
1603 Atkinson Drive
409-634-3369

McAllen 78501
Weslaco Tool
700 Ash Street
210-664-9156

Midland 79701
Midland Tool Specialty
918 S. Main Street
915-682-4647

Odessa 79761
Builder's Tool & Fasteners
713 E. 2nd Street
915-332-3511

San Angelo 76903
Frank's Electric
2621 Marlin Luther King
915-655-8928

San Antonio 78205
Electric Motor Service
1514 E. Commerce
512-226-3462

San Antonio 78212
*Otto Dukes Machinery
600 San Pedro
210-224-5576

Sherman 75090
Texoma Tool Repair Co.
309 E. Houston Street
214-892-1510

Texarkana 75501
Ray's Electric Motor Repair
922 Bowie Street
214-792-7031

Tyler 75702
Mason Machinery
1908 W. Erwin Street
214-592-6581

Waco 76710
Gross Yowell
3720 Franklin Drive
817-754-5425

Weslaco 78596
Weslaco Tool Co.
1221 West Expressway 83
210-968-9156

Wichita Falls 76301
Hornsby Heavy Hardware
615 Ohio Street
817-322-8696

UTAH

Logan 84321
Tool Liquidator
839 N. Main
801-753-4256

Salt Lake City 84115
A.C. Tool and Service, Inc.
2990 South West Temple
801-487-4953

Salt Lake City 84115
*M & M Tool and Machinery
1773 S 300 W (Rear)
801-485-8200

Salt Lake City 84115
Schlosser Tool and Machinery
2199 S. West Temple
801-484-4242

VERMONT

S. Burlington 05403
Burlington Tool Repair
23 San Remo Drive
802-658-4131

VIRGINIA

Christiansburg 24073
SPC United/Warren E. Smith Shops
820 JK Park St.
703-382-5501

Fredericksburg 22404
Fredericksburg Hardware Co., Inc.
513 William Street
703-373-8383

Harrisonburg 22801
Rocking R Hardware
1030 S. High Street
703-434-9967

Norfolk 23517
Bryan Electric Co., Inc.
424 West 25th Street
804-625-0378

Norfolk 23502
*Henry Walke Co.
1161 Ingleside Road
804-855-1071

Penn Laird 22846
JL Lawn & Garden Center
Route 1, Box 183
703-289-9844

Richmond 23222
Staley Co., Inc.
2024 Chamberlayne Avenue
804-321-6595

Roanoke 24013
Roanoke Armature Co.
1108-1/2 Street S.E.
703-345-8741

WASHINGTON

Bellevue 98005
*Eastside Saw & Sales
12880 Bel Red Road
206-454-7627

Bellingham 98225
Pro Tool of Bellingham
300 Ohio Street
206-733-7343

File 98424
Tap Power Tool Service
1421 52nd Avenue East
206-922-5787

Port Angeles 98362
L & L Tools
1927 E. First St.
206-457-1116

Renton 98055
Porter-Cable Corporation
268 Southwest 43rd Street
206-251-6680

Spokane 99202
Spokane Power Tool
E. 801 Trent Avenue
509-489-4202

Yakima 98901
Cooper Electric Motor Service
205 S. 4th Avenue
509-452-9550

WEST VIRGINIA

Huntington 25701
Lawter Electric Motor Co.
202 Adams Avenue
304-522-8297

Wheeling 26003
Kennedy Hardware
3300 McCulloch Street
304-233-3600

WISCONSIN

Green Bay 54301
Power Tool Service Co.
310 N. Webster Ave.
P.O. Box 1343
414-437-2594

Green Bay 54304
*Bay Verte Machinery
1023 Ashwaubenon
414-336-7440

Kenosha 53144
Aetna Power Tool Service
(Div. of Aetna Mfg. Co.)
4622 - 68th Avenue
414-654-1170

LaCrosse 54603
A-Line Machine Tool Co.
800 Monitor St.
608-785-1515

Madison 53713
Electric Motors Unlimited
1000 Jonathan Drive
608-271-2311

Milwaukee 53222
Wisconsin Power Tool Inc.
10700 Burleigh Street
414-774-3650

Oshkosh 54901
*Kitz & Pfeil Hardware
427 North Main
414-236-3340
Schofield 54476
R.A. Miller Industrial Supply
303 Ross Avenue
715-355-7999

WYOMING

Casper 82601
Casper Saw Shop
147 S. McKinley
307-237-3279

WASHINGTON, D.C.

Advanced Tool & Machine Service
(ATMS)
1933 Montana Avenue, N.E.
206-636-8670

PUERTO RICO

Aquadilla 00603
J.C.A. Enterprises, Inc.
PR 111 South, Bldg. 531
BO, Victoria
P.O. Box 3879
809-891-1741

San Juan 00922
*Ferreteria Abraham Inc.
P.O. Box 11974
Caparra Hts. Sta.
809-782-6033

Sierra Bayamon 00961
B & M Electric Tool Repair Center
Calle 49, Bloque 51
Casa 27 Avenue West Main
809-787-2287

CANADA

Alberta

Calgary T2E 8L2
Bay #6, 2520-23 St. N.E.
403-735-6166

British Columbia

Burnaby V5A 4T8
8520 Baxter Place
604-420-0102

Manitoba

Winnipeg R3H 0H2
1699 Dublin Avenue
204-633-9259

Ontario

Mississauga L4V 1J2
6463 Northam Drive
416-677-5330

Guelph N1H 6M7
644 Imperial Road
519-836-2840

Ottawa K2A 3X2
851 Richmond Road
613-728-1124

Quebec

St. Laurent (Mt), P.O.
H4R 1V8
1447, Bégin
514-336-8772

Ste. Foy G1N 4L5
Suite 202
2202 Rue Lavoisier
418-681-7305