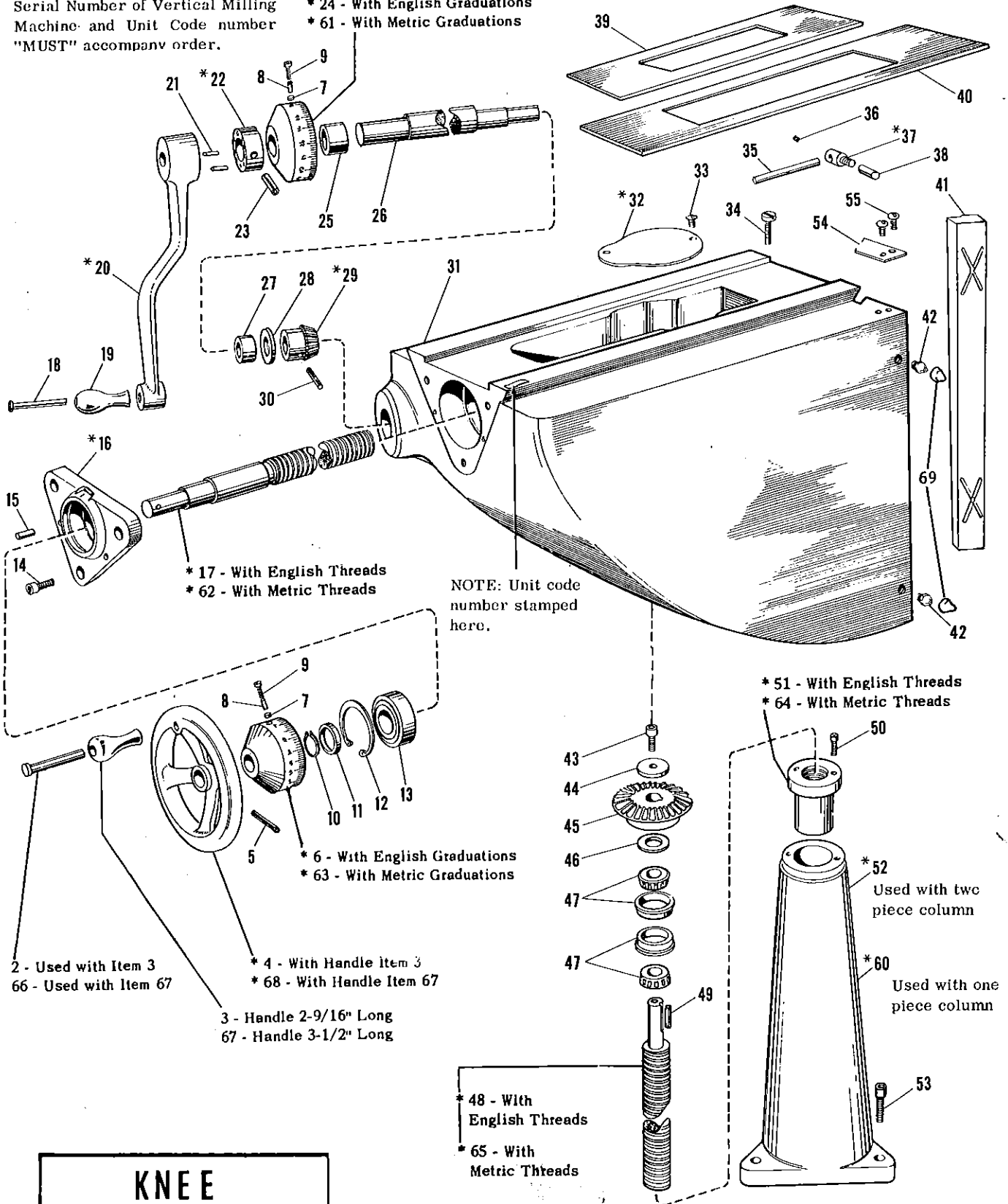


Serial Number of Vertical Milling Machine and Unit Code number "MUST" accompany order.

* 24 - With English Graduations
* 61 - With Metric Graduations

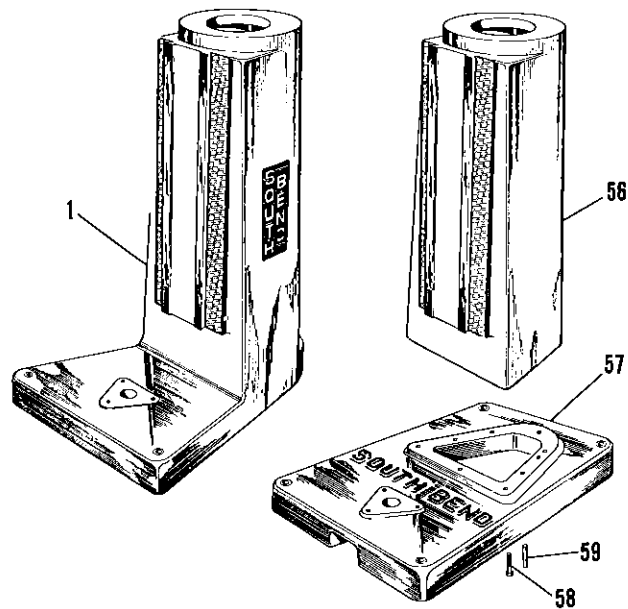


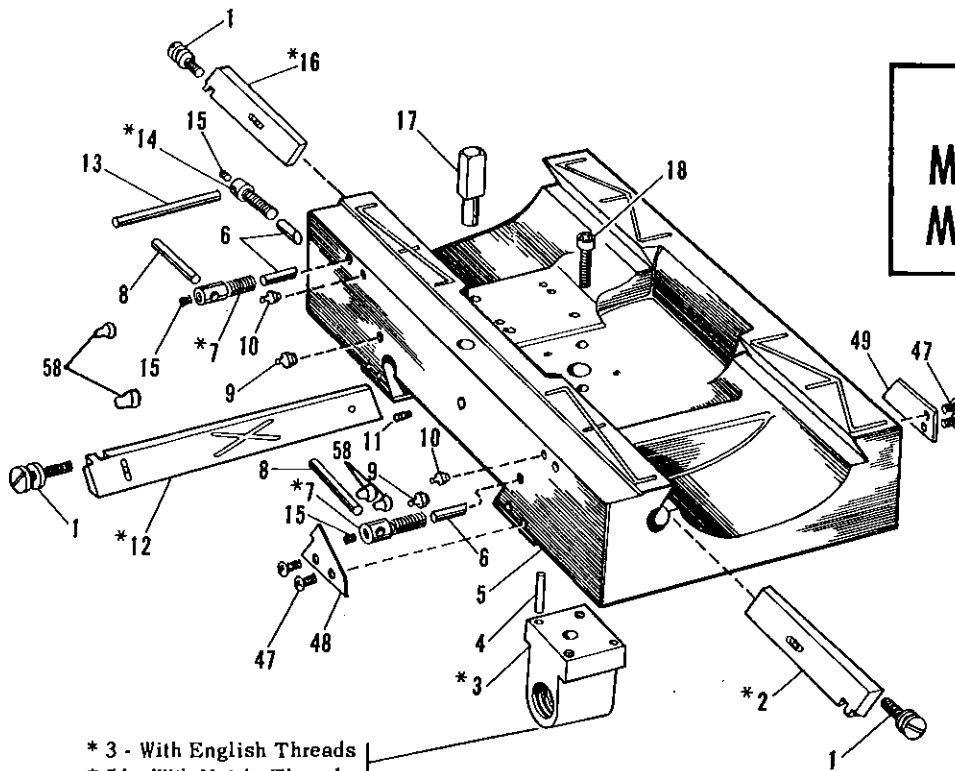
KNE
MKM 100-English
MKM 100M-Metric

*Available only as sub-assembly. Parts included are indicated by the item numbers appearing in parenthesis after part name.

ITEM NO	PART NAME	PART NO.	NO. REQ.	ITEM NO	PART NAME	PART NO.	NO. REQ.
1	Column	PT7000M1		36	Set Screw 8-32 x 3/16	120 x 1003	1
2	Stud	PT1245	1	37	Clamp (35-36)	*AS7114M1	1
3	Handle	PT1495	1	38	Gib Binder	PT7117M1	1
4	Hand Wheel (2-3-5)	*AS7092M1	1	39	Cover Plate, Short	PT7081M1	1
5	Roll Pin 3/16 x 1-3/8	159 x 5	1	40	Cover Plate, Long	PT7082M1	1
6	Graduated Collar (7-8-9)	*AS7018M1	1	41	Knee Gib	PT7033M1	1
7	Binder Shoe	PT1080NK1	2	42	Grease Fitting	190 x 1610	4
8	Pin 1/8 x 3/4	160 x 25	2	43	Cap Screw 1/4-28 x 3/4	114 x 14	1
9	Thumb Screw	PT1857	2	44	Clamp Washer	PT7109M1	1
10	Tru-Arc Ring	165 x 101	1	45	Bevel Gear	PT7110M1	1
11	Spacer	PT7102M1	1	46	Thrust Washer	PT7107M1	1
12	Tru-Arc Ring	165 x 402	1	47	Timken Tapered Bearing (Cone #A6062-Cup #A6157B)	PT7108M1	2
13	Double Row Bearing	PT7098M1	1	48	Elevating Screw (43-49)	*AS7002M1	1
14	Cap Screw 3/8-16 x 1	114 x 216	3	49	Square Key	164 x 9	1
15	Dowel Pin 1/4 x 1	153 x 1	2	50	Cap Screw 10-24 x 5/8	114 x 2	2
16	C. F. Screw Bearing Brkt. (14-15)	*AS7027M1	1	51	Elevating Nut (50)	*AS7003M1	1
17	Cross Feed Screw (10-11)	*AS7094M1	1	52	Elevating Screw Housing (53)	*AS7001M2	1
18	Stud	PT1246	1	53	Cap Screw 3/8-16 x 1-1/2	114 x 224	3
19	Handle	PT1496	1	54	Chip Scraper	PT7182M1	2
20	Elevating Handle (18-19-21)	*AS7034M2	1	55	Screw 6-32 x 3/8	132 x 1103	4
21	Pin	PT7288M1	2	56	Column	PT7000M2	
22	Elevating Clutch (23)	*AS7008M1	1	57	Column Base (58-59)	*AS7163M1	1
23	Roll Pin 1/4 x 1-3/4	159 x 6	1	58	Hex. Hd. Cap Screw 1/2-13 x 2-1/4	112 x 436	6
24	Graduated Collar (7-8-9)	*AS7017M1	1	59.	Sq. Hd. Taper Pin	PT7009M1	2
25	Front Elev. Shaft Bushing	PT7103M1	1	60	Elevating Screw Housing (53)	*AS7001M1	1
26	Elevating Shaft	PT7095M1	1	61	Graduated Collar, Metric (7-8-9)	*AS7189M1	1
27	Rear Elev. Shaft Bushing	PT7105M1	1	62	Cross Feed Scr, Metric (10-11)	*AS7191M1	1
28	Thrust Washer	PT7106M1	1	63	Grad. Collar, Metric (7-8-9)	*AS7190M1	1
29	Bevel Gear Pinion (30)	*AS7111M1	1	64	Elevating Nut, Metric (50)	*AS7196M1	1
30	Roll Pin 3/16 x 1-1/8	159 x 4	1	65	Elevating Scr., Metric(43-49)	*AS7193M1	1
31	Milling Machine Knee	PT7039M1		66	Stud	PT1246	1
32	Bevel Gear Cover (33)	*AS7134M1	1	67	Handle	PT1496	1
33	Machine Screw 10-32 x 3/8	101 x 306	2	68	Hand Wheel (5-66-67)	*AS7092M2	1
34	Gib Screw	PT7016M1	2	69	Lubricaps	PT7187M1	4
35	Handle	PT7116M1	1				

Column
MMC 100 - one piece
MMC 101 - two piece





* 3 - With English Threads
 * 54 - With Metric Threads

NOTE: When ordering replacement parts for saddle specify code number stamped on knee, sheet Form No. 969A.

ITEM NO.	PART NAME	PART NO.	NO. REQ.	ITEM NO.	PART NAME	PART NO.	NO. REQ.
1	Gib Screw	PT7015M1	3	34	Table Nut (29-35)	*AS7022M1	1
2	Right Hand Table Gib (1)	*AS7030M1	1	35	Straight Pin	PT1833-1	2
3	Cross Feed Nut (4-18)	*AS7021M1	1	36	Table Stop	PT7119M3	2
4	Straight Pin	PT1833-1	2	37	"T" Slot Nut	PT7120M1	2
5	Milling Machine Saddle	PT7038M1	1	38	Left Hd. Table Bearing Brkt. (29-31)	*AS7028M1	1
6	Gib Binder	PT7117M1	3	39	Tru-Arc Ring	165 x 402	1
7	Clamp (8-15) (Power Fd)	*AS7114M1	2	40	Double Row Ball Bearing		
8	Clamp (8-15) (Hand Fd)	*AS7438M1	2		N. D. 55605	PT7098M1	1
9	Handle	PT7115M1	2	41	Spacer	PT7102M1	1
10	Allemitte Fitting	190 x 1641	4	42	Tru-Arc Ring	165 x 101	1
11	Allemitte Fitting	190 x 1641	4	43	Pipe Plug 3/8-18 Hex. Soc.	152 x 63	2
12	Saddle Gib (1)	*AS7032M1	1	44	Set Screw 1/4-20	120 x 4	1
13	Handle	PT7116M1	1	45	Milling Machine Table	PT7036M232	1
14	Clamp (13-15)	*AS7113M1	1	46	Milling Machine Table	PT7036M242	1
15	Set Screw 8-32 x 3/16	120 x 1003	3	47	Screw 6-32 x 3/8	132 x 1103	8
16	Left Hand Table Gib (1)	*AS7031M1	1	48	Chip Scraper	PT7183M1	2
17	Table Stop Pin	PT7130M1	1	49	Chip Scraper	PT7182M1	2
18	Cap Screw 3/8-16 x 1	114 x 216	2	50	Graduated Collar, Metric (24-25-26)		
19	Stud	PT1245	2			*AS7190M1	2
20	Machine Handle	PT1495	2	51	Handle	PT1496	2
21	Hand Wheel (19-20-22)	*AS7092M1	2	52	Stud	PT1246	2
22	Roll Pin 3/16 x 1-3/8	159 x 5	2	53	Hand Wheel (22-51-52)	*AS7092M2	2
23	Graduated Collar (24-25-26)	*AS7018M1	2	54	Cross Feed Nut Metric (4-18)	*AS7194M1	1
24	Binder Shoe	PT1080NK1	2	55	Table Nut, Metric (29-35)	*AS7195M1	1
25	Straight Pin 1/8 x 3/4	160 x 25	2	56	Table Screw, Metric (41-42)	*AS7192M132	1
26	Thumb Screw	PT1857	2	57	Table Screw, Metric (41-42)	*AS7192M142	1
27	Table Screw Bushing	PT7104M1	1	58	Lubricaps	PT7187M1	6
28	Rt. Hd. Table Bearing Brkt. (29-30-31)	*AS7029M2	1	59	Cap Screw 3/8-16 x 7/8	114 x 214	2
29	Cap Screw 3/8-16 x 1	112 x 224	14	60	Cap Screw 1/2-13 x 1-3/4	112 x 428	2
30	Gits Oiler	155 x 17	1	61	Cap Screw 3/8-16 x 1-1/2	112 x 224	2
31	Dowel Pin	153 x 1	4	62	Tee Nut	7171M1	2
32	Table Screw (41-42)	*AS7093M132	1	63	Tee Nut	7172M1	2
33	Table Screw (41-42)	*AS7093M142	1				
				64			2
				65	Washer	161 x 30	2
				66	Set Screw #6-32	114 x 713	2

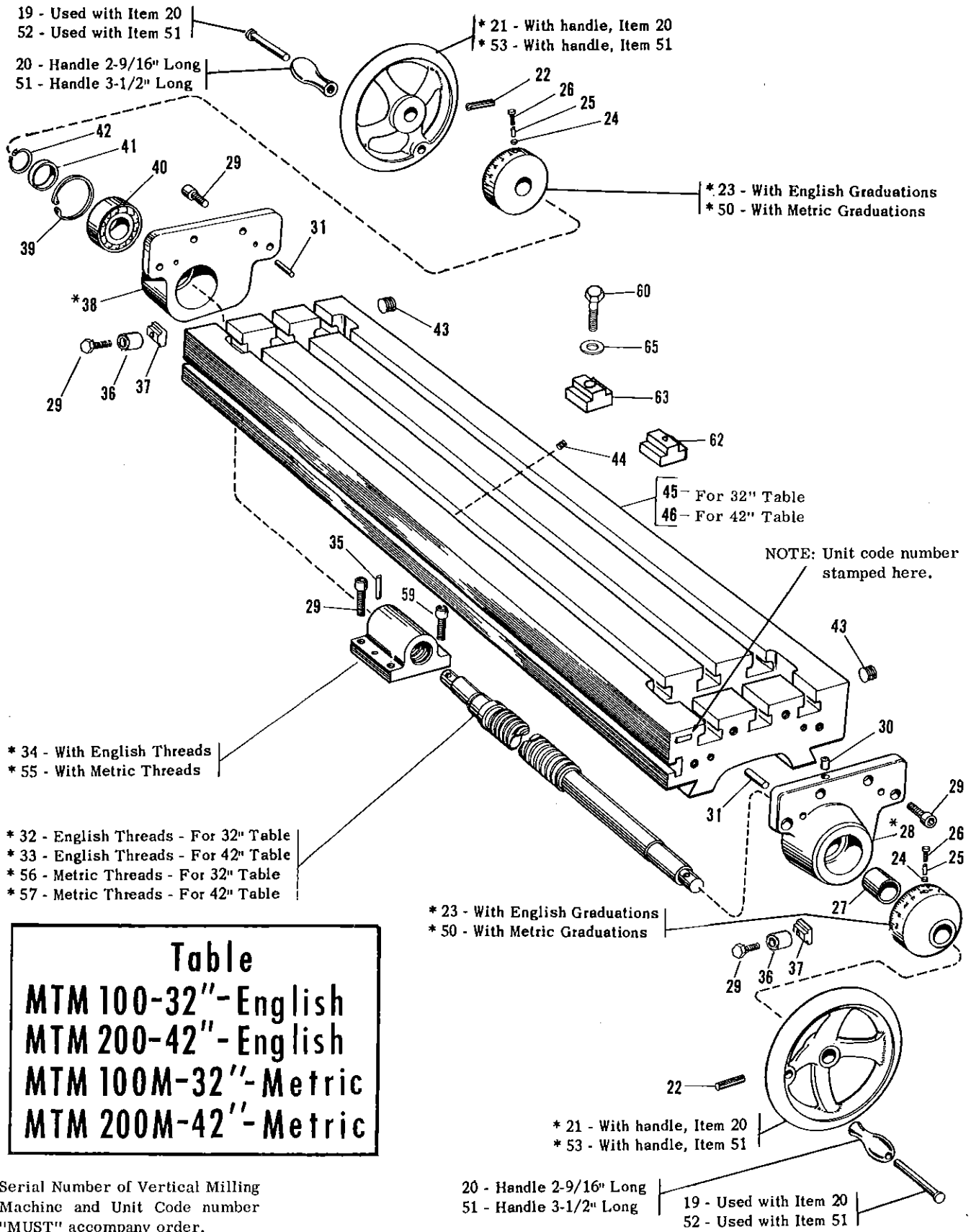


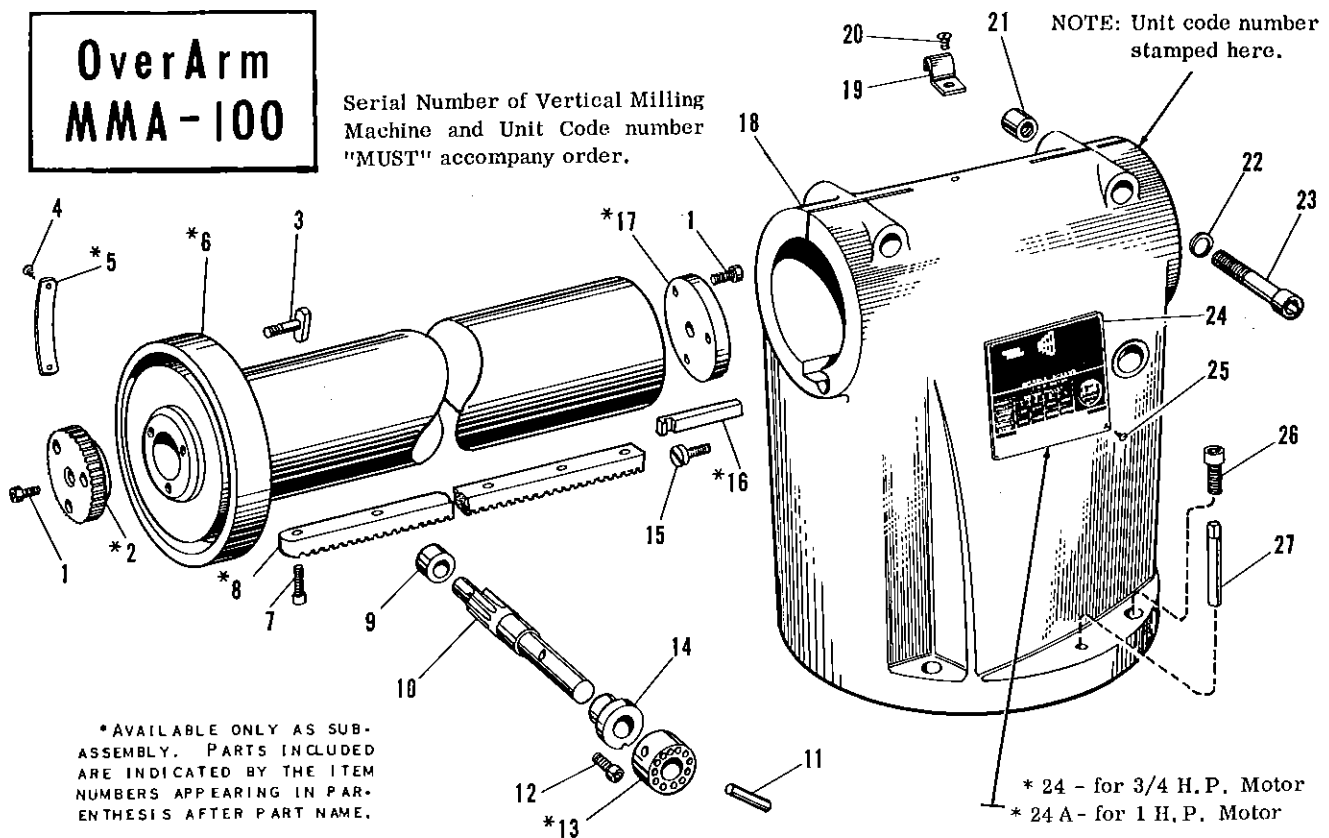
Table	
MTM 100-32"	-English
MTM 200-42"	-English
MTM 100M-32"	-Metric
MTM 200M-42"	-Metric

Serial Number of Vertical Milling Machine and Unit Code number "MUST" accompany order.

*AVAILABLE ONLY AS SUB-ASSEMBLY. PARTS INCLUDED ARE INDICATED BY THE ITEM NUMBERS APPEARING IN PARENTHESIS AFTER PART NAME.

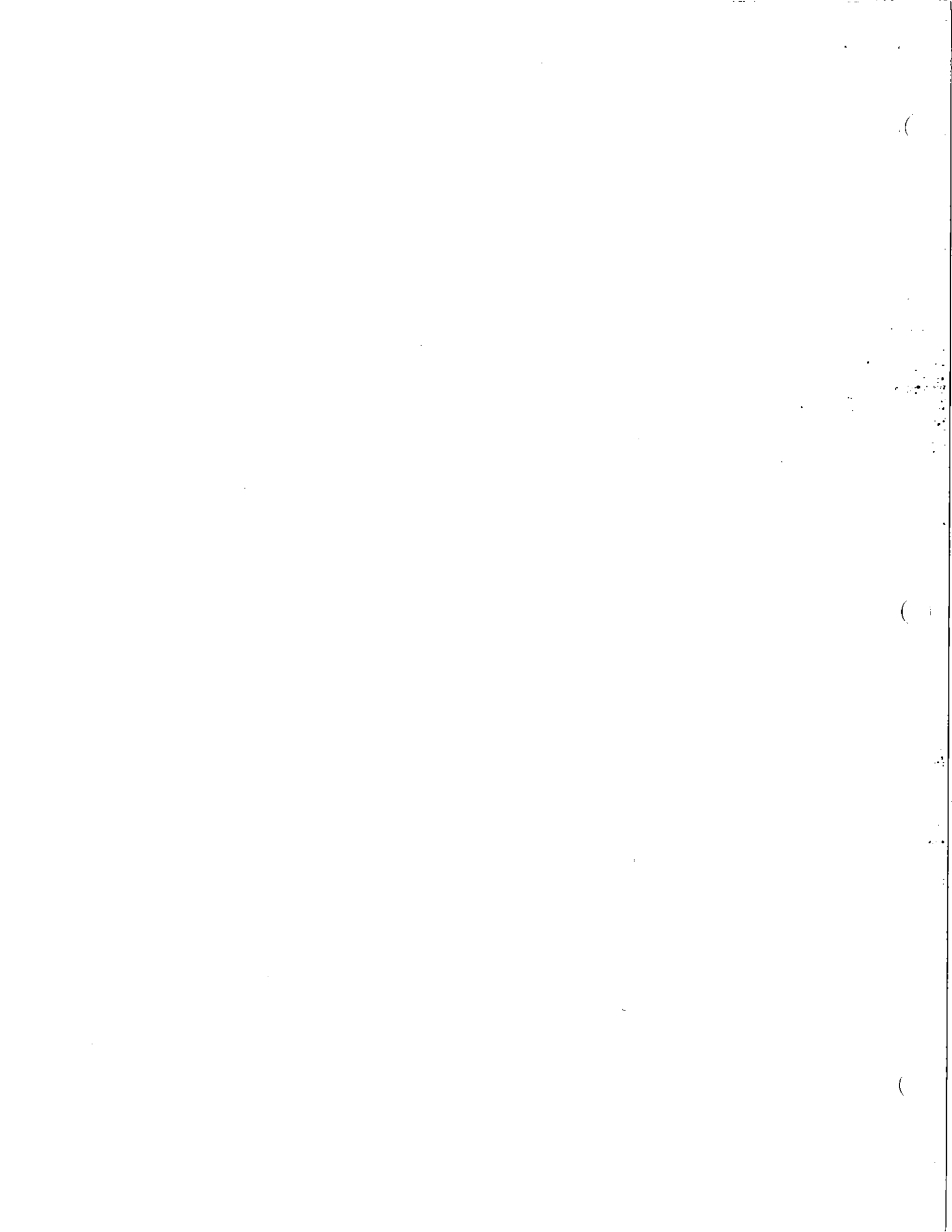
Over Arm MMA-100

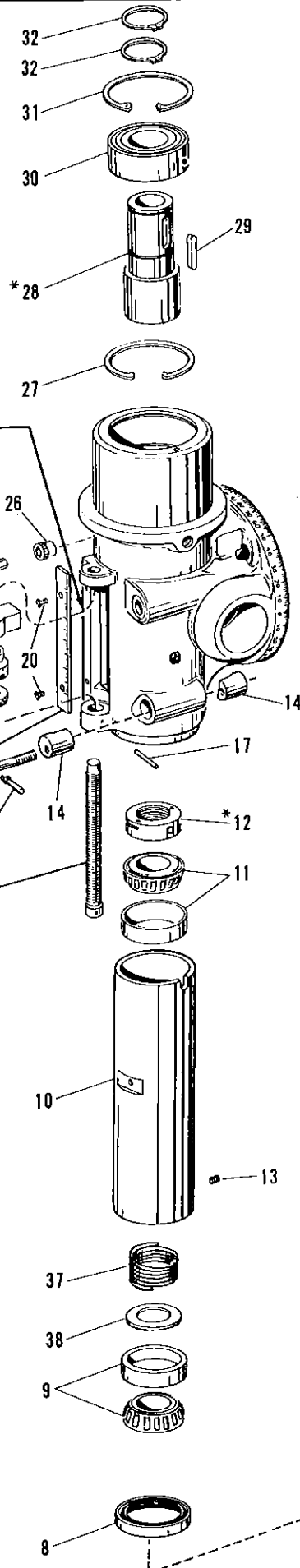
Serial Number of Vertical Milling Machine and Unit Code number "MUST" accompany order.



* AVAILABLE ONLY AS SUB-ASSEMBLY. PARTS INCLUDED ARE INDICATED BY THE ITEM NUMBERS APPEARING IN PARENTHESIS AFTER PART NAME.

ITEM NO.	PART NAME	PART NO.	NO. REQ.
1	Cap Screw 1/4-20 x 3/4	114 x 12	6
2	Head Rotation Gear (1)	*AS7013M1	1
3	Head Mounting "T" Bolt	PT7076M1	4
4	Self Tapping Screw	132 x 1101	4
5	Vernier Plate (4)	*AS7138M2	2
6	Over Arm (8)	*AS7010M1	1
7	Cap Screw 1/4-20 x 5/8	114 x 10	6
8	Over Arm Rack (7)	*AS7011M1	1
9	Rack Pinion Bushing	PT7005M1	1
10	Over Arm Pinion	PT7007M1	1
11	Roll Pin 1/4 x 1-3/4	159 x 6	1
12	Cap Screw 1/4-20 x 5/8	114 x 10	1
13	Elevating Clutch (11)	*AS7008M1	1
14	Rack Pinion Flanged Bushing	PT7006M1	1
15	Gib Screw	PT7016M1	1
16	Over Arm Gib (15)	*AS7014M1	1
17	Cover Plate (1)	*AS7012M1	1
18	Over Arm Support	PT7004M1	1
19	Conduit Clamp	SE9000	1
20	Machine Screw	101 x 604	1
21	Allenut 1/2-13	187 x 102	2
22	Hard Washer	PT7020M1	2
23	Cap Screw 1/2-13 x 4	114 x 464	2
24	Spindle Speed Plate (25)	*AS7160M1	1
24A	Spindle Speed Plate (25)	*AS7161M1	1
25	Pop Rivet 1/8 x 1/4	134 x 4	4
26	Cap Screw 1/2-13 x 1-1/2	114 x 424	4
27	Sq. Hd. Taper Pin	PT7009M1	2





NOTE: Unit code number stamped here.

22 - With English Threads
 33 - With Metric Threads
 21 - With English Threads
 34 - With Metric Threads

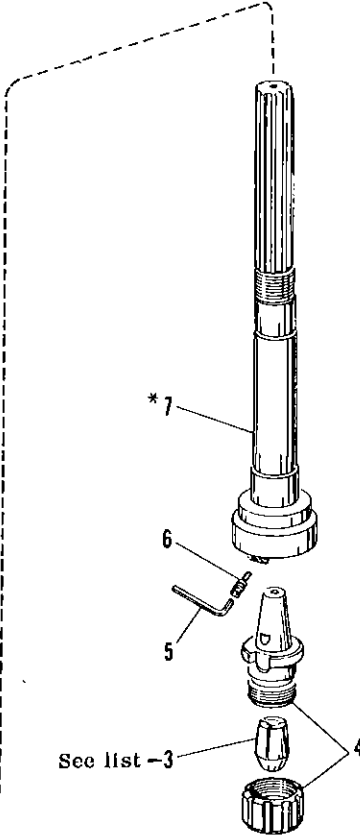
* 19 - With English Graduations
 * 35 - With Metric Graduations

* 18 - With English Threads
 * 36 - With Metric Threads

HEAD - Showing The Spindle

MHM101 - English, Power Feed
 MHM102 - English, Hand Feed
 MHM101M - Metric, Power Feed
 MHM102M - Metric, Hand Feed

*Available only as sub-assembly. Parts included are indicated by the item numbers appearing in parenthesis after part name.



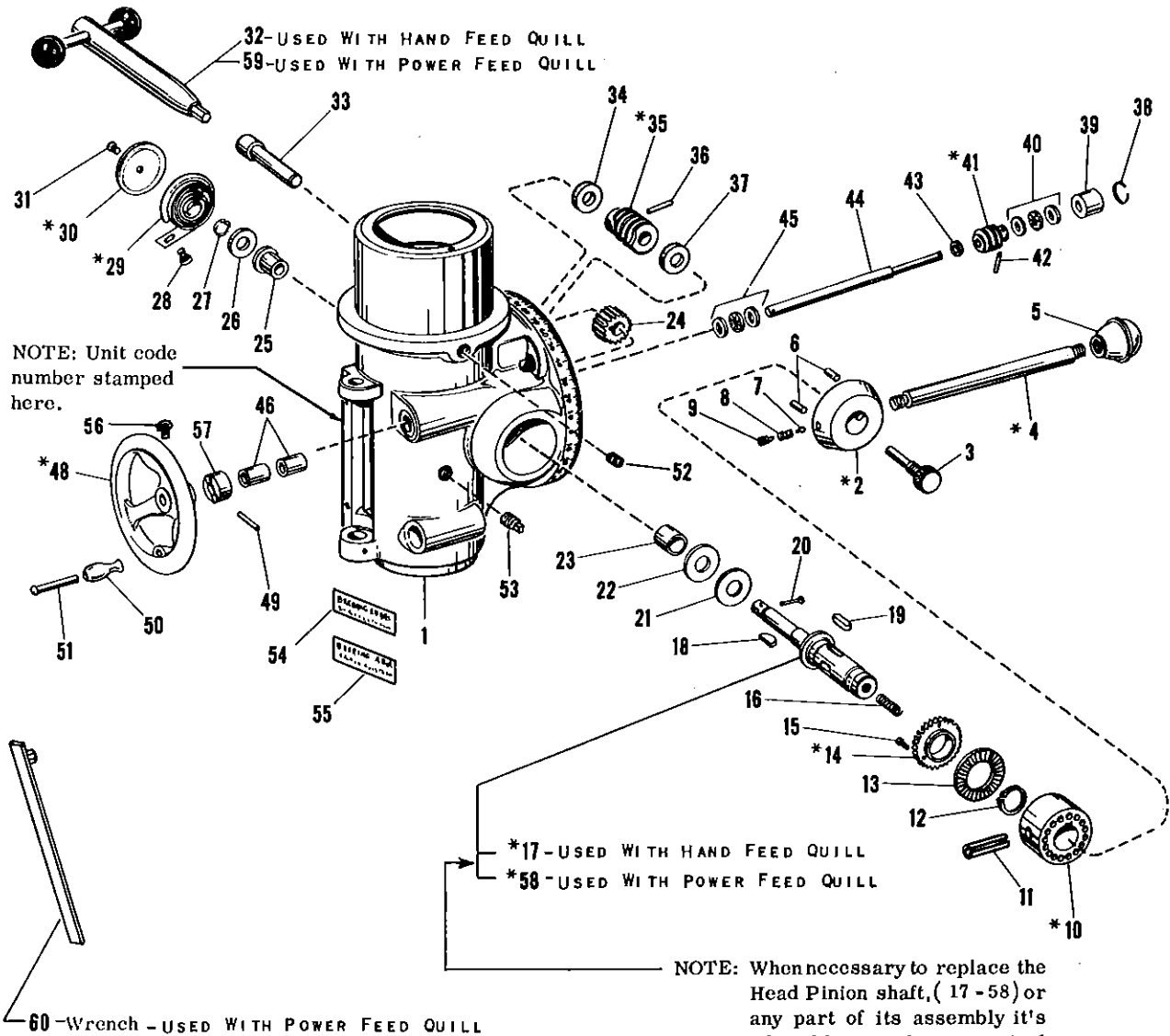
See list -3

Serial Number of Vertical Milling Machine and Unit Code number "MUST" accompany order.

ITEM NO.	PART NAME	PART NO.	NO. REQ.
1	Spanner Wrench	PT7139M1	1
3	Collet, 3/8" Hole	MIL7006	1
	Collet, 1/2" Hole	MIL7008	1
	Collet, 5/8" Hole	MIL7010	1
	Collet, 3/4" Hole	MIL7012	1
4	Collet Chuck	MIL7000	1
5	Hex. Wrench	CE2385	1
6	Set Screw	PT7318M1	2
7	# 30 M.M. Taper Spindle (6-8-9)	*AS7057M2	1
8	Oil Seal	PT7162M2	1
9	Timken Taper Roller Bearing	PT7101M1	1
10	Quill	PT7063M4	1
11	Timken Taper Roller Bearing	PT7100M1	1
12	Adjusting Nut	PT7062M2	1
13	Set Screw 8-32 x 3/16	120 x 1003	1
14	Quill Lock Clamp	PT7075M1	1
15	Lock Screw Handle	PT7074M2	1
16	Quill Lock Clamp Screw (15)	*AS7073M2	1
17	Taper Pin	168 x 208	1
18	Quill Stop Screw (17)	*AS7070M1	1
19	Quill Feed Depth Scale (20)	*AS7059M1	1
20	Machine Screw	104 x 206	1
21	Quill Stop Lock Nut	PT7072M1	1
22	Quill Stop	PT7071M1	1
23	Quill Stop And Key (24)	*AS7064M1	1
24	Cap Screw 5/16-24 x 3/4	114 x 113	1
25	Hex. Wrench	CE2390	1
26	Allenut	187 x 101	4
27	Tru-Arc Ring	165 x 302	1
28	Spindle Driving Sleeve (29)	*AS7065M1	1
29	Key 1/4 x 1-1/2	163 x 32	1
30	Double Row Bearing	PT7099M1	1
31	Tru-Arc Ring	165 x 401	1
32	Tru-Arc Ring	165 x 102	2
33	Quill Stop - Metric	PT7199M1	1
34	Quill Stop Nut - Metric	PT7200M1	1
35	Quill Fd. Depth Scale (20) Met.	*AS7197M1	1
36	Quill Stop Scr. (17) Metric	*AS7198M1	1
37	Spring	PT7292M1	1
38	Spindle Ring	PT7293M1	1

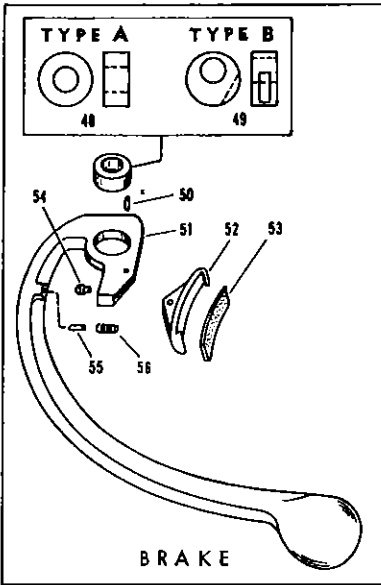
Serial Number of Vertical Milling Machine and Unit Code number "MUST" accompany order.

HEAD	
MHM101	- English, Power Feed
MHM102	- English, Hand Feed
MHM101M	- Metric, Power Feed
MHM102M	- Metric, Hand Feed

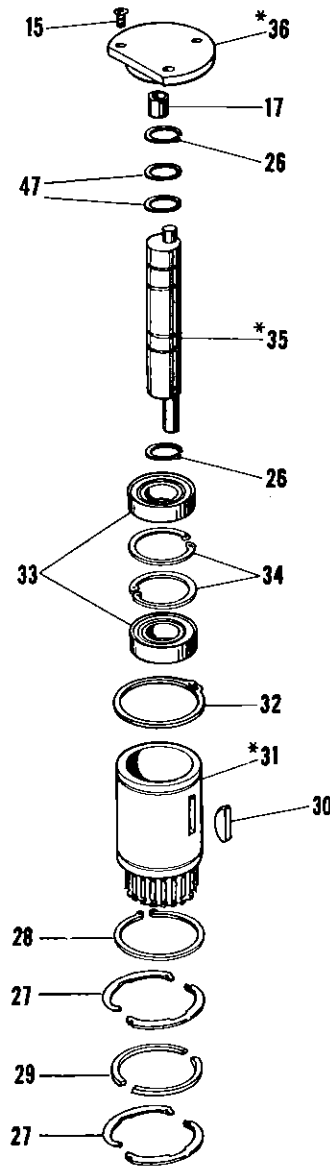


*Available only as sub-assembly. Parts included are indicated by the item numbers appearing in parenthesis after part name.

ITEM NO.	PART NAME	PART NO.	NO. REQ.
1	Head	PT7037M2	1
2	Quill Feed Clutch (6-7-8-9)	*AS7067M1	1
3	Feed Knob	PT7137M1	1
4	Handle (5)	*AS7066M1	1
5	Knob	PT4048DP1	1
6	Dowel	153 x 3	2
7	Detent Pin	PT7289M1	1
8	Spring	162 x 27	1
9	Detent Screw	PT7290M1	1
10	Fine Feed Clutch (11)	*AS7135M1	1
11	Roll Pin	159 x 7	1
12	Tru-Arc Ring	165 x 1	1
13	Worm Gear Clutch	PT7136M1	1
14	Head Worm Clutch Gear (15)	*AS7023M1	1
15	Cap Screw 6-32x3/8	114 x 714	3
16	Spring	162 x 7	1
17	Hd. Pinion Shaft (12 - 16 - 18 19 - 20 - 27)	*AS7129M2	1
18	Woodruff Key	PT2077	1
19	Key	163 x 31	1
20	Spring Center Pin	PT7122M1	1
21	Thrust Washer (Bronze)	PT7127M1	1
22	Thrust Washer (Steel)	PT7124M1	1
23	Bushing	PT5024S1	1
24	Quill Rack Gear	PT7357M1	1
25	Flanged Bushing	PT7125M1	1
26	Thrust Washer	PT7123M1	1
27	Tru-Arc Ring	165 x 201	1
28	Spring Catch Pin	PT7121M1	1
29	Flat Spiral Spring (20 - 28)	*AS7132M1	1
30	Spring Cover Plate (31)	*AS7131M2	1
31	Machine Screw	105 x 6	1
32	Hex. Wrench Assembly	AS7165M1	1
33	Head Rotation Worm Shaft	PT7077M1	1
34	Thrust Washer	PT7080M1	1
35	Head Rotation Worm (36)	*AS7078M1	1
36	Roll Pin 3/16 rd. x 13/16	159 x 3	1
37	Thrust Washer	PT7079M1	1
38	Tru-Arc Ring	165 x 501	1
39	Bushing	PT7133M1	1
40	Thrust Bearing	PT7090M1	1
41	Fine Feed Worm (42)	*AS7083M1	1
42	Pin	PT1844-1	1
43	Head Worm Shaft Spacer	PT7091M1	1
44	Head Worm Shaft	PT7086M1	1
45	Thrust Bearing	PT7089M1	1
46	Head Worm Shaft Bushing	PT7088M1	2
47			
48	Hand Wheel (49 - 50 - 51)	*AS7068M2	1
49	Straight Pin	PT1837 - 1	1
50	Handle	PT1491	1
51	Stud	PT1241	1
52	Pipe Plug	152 x 62	1
53	Oiler Plug	PA7294M1	1
54	Lubrication Plate (61)	*AS7296M1	1
55	Instruction Plate (61)	*AS7295M1	1
56	Thumb Screw	PT1857	1
57	Head Worm Shaft Collar (49)	*AS7087M2	1
58	Hd. Pinion Shaft (12 - 16 - 18 - 19 - 20 - 27)	*AS7129M2	1
59	Hex. Wrench Assembly	AS7409M1	1
60	Wrench Assembly	AS7400M1	1
61	Screw	132 x 2	4



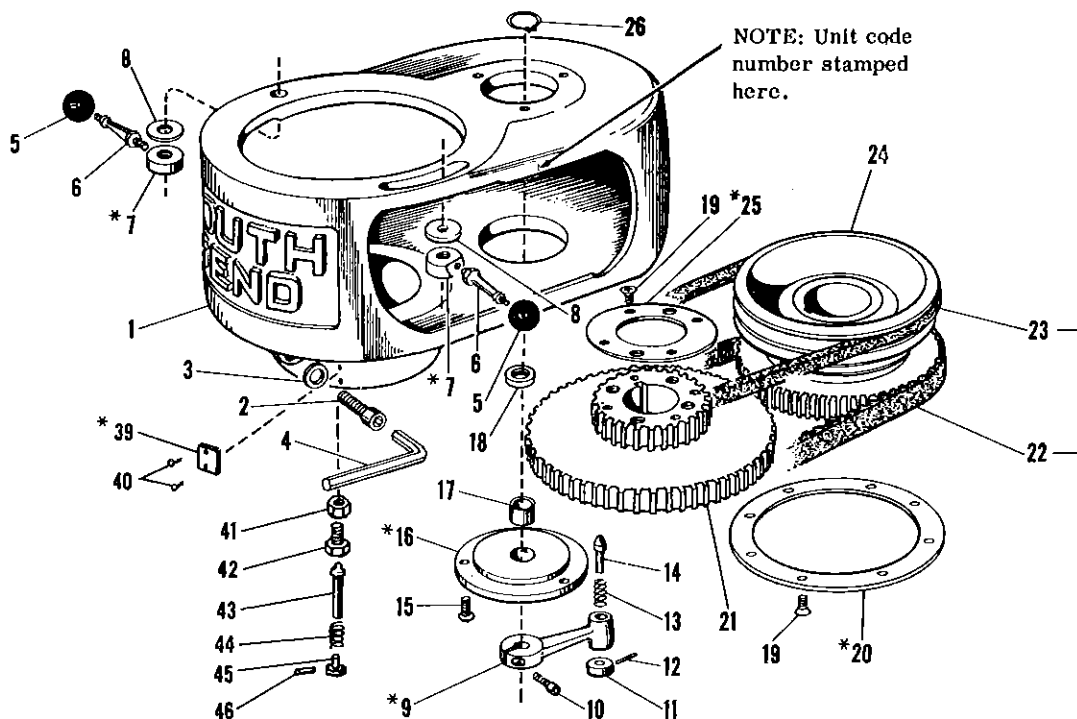
Drive Housing
MEJ 200-50 Cycle
MEJ 100-60 Cycle
MEJ 201-50 Cycle
MEJ 101-60 Cycle



*Available only as sub-assembly. Parts included are indicated by the item numbers appearing in parenthesis after part name.

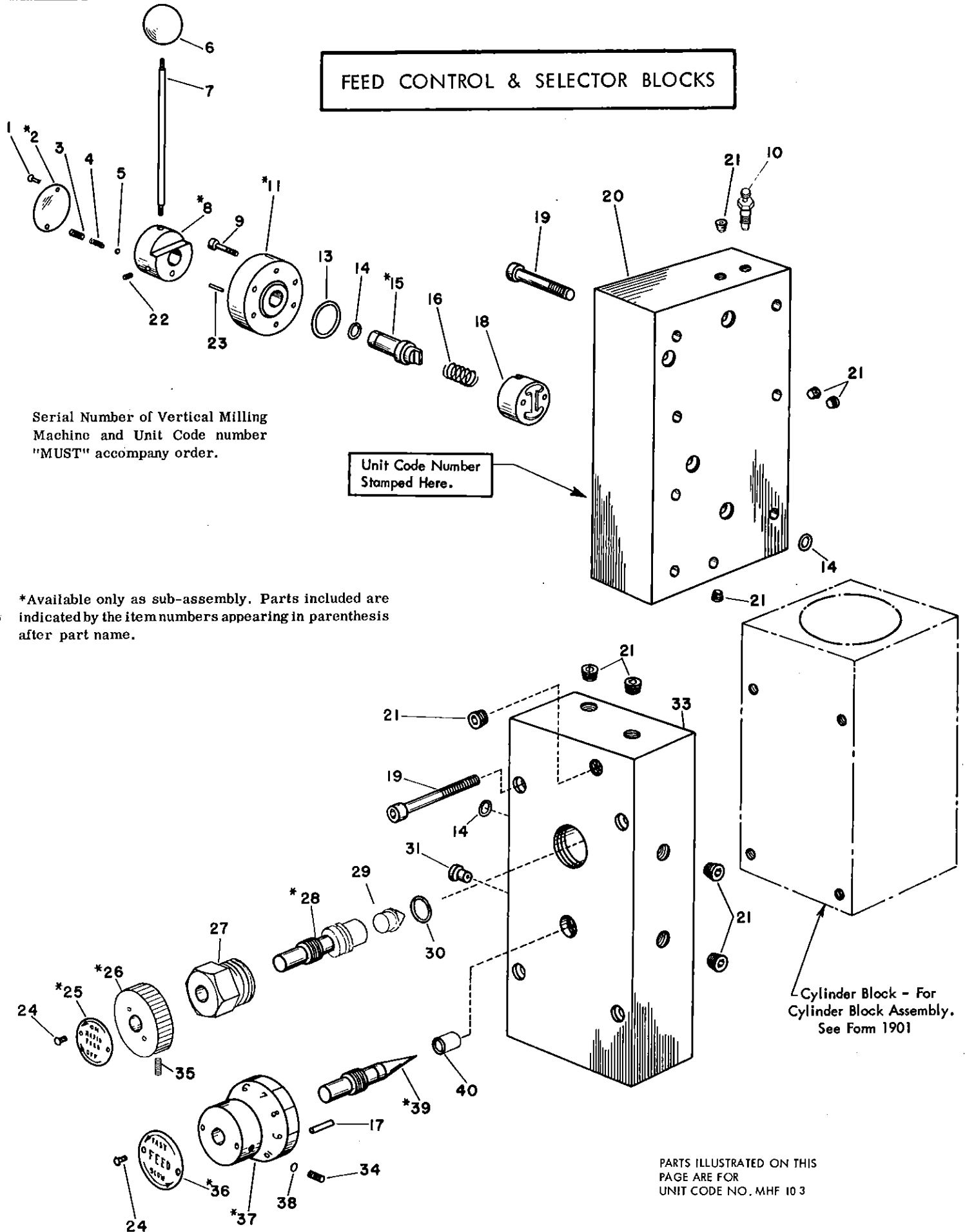
Serial Number of Vertical Milling Machine and Unit Code number "MUST" accompany order.

When necessary to replace belt we recommend replacing both belts (item 22 and 23 at same time.)



ITEM NO.	PART NAME	PART NO.	NO. REQ.
1	Pulley Housing	PT7019M2	1
2	Cap Screw	114 x 228	1
3	Washer	PT7060M1	1
4	Allen Wrench	CE2389	1
5	Bakelite Ball	PT406NT1	2
6	Motor Clamp Nut Handle	PT7040M2	2
7	Motor Clamp Nut (5-6)	*AS7042M1	2
8	Washer	PT1675FHI	2
9	Timing Belt Adj. Lever (10-11-12-13-14)	*AS7026M1	1
10	Cap Screw	114 x 712	1
11	Knurled Knob	PT7049M1	1
12	Roll Pin	159 x 1	1
13	Coil Spring	162 x 35	1
14	Adjusting Lever Plunger	PT7048M1	1
15	Machine Screw	105 x 608	6
16	Lower Bearing Plate (15-17)	*AS7047M2	1
17	Counter Shaft Bearing	PT7054M1	2
18	Eccentric Shaft Washer	PT7123M1	1
19	Machine Screw	103 x 6	12
20	Timing Belt Pulley Flange (19)	*AS7050M1	1
21	Spindle Driving Pulley	AS7035M2	1
22	Timing Belt (Rubber)	PT7170-1	1
23	V-Belt (60 Cy.)	CE4L320	1
	V-Belt (50 Cy.)	CE4L310	1
24	Counter Shaft Pulley (60 Cy.)	PT7025M1	1
	Counter Shaft Pulley (50 Cy.)	PT7169M1	1
25	Spindle Drive Pulley Flange (19)	*AS7053M1	1
26	Tru-Arc Ring	165 x 1	2
27	Tru-Arc Ring	165 x 601	2
28	Tru-Arc Ring	165 x 2	1
29	Belt Flange	PT7055M1	1 pr.
30	Woodruff Key	PT2078	1
31	Bearing Housing (30)	*AS7044M1	1
32	Tru-Arc Ring	165 x 103	1
33	Sealed Ball Bearing	PT7061M1	2
34	Tru-Arc Ring	165 x 301	2
35	Counter Shaft Eccentric (26)	*AS7045M1	1
36	Top Bearing Plate (15)	*AS7046M1	1
39	Spindle Lock Plate (40)	*AS7323M1	1
40	Drive Screw	130 x 3	2
41	Nut	139 x 35	1
42	Spindle Lock Bushing	PT7321M1	1
43	Lock Plunger (41 - 42 - 44 -45 - 46)	*AS7320M1	1
44	Spring	162 x 35	1
45	Knob	PT7322M1	1
46	Pin	160 x 27	1
47	"O" Ring	193 x 16	2
48	Bushing	PT7328M1	1
49	Bushing	1136MC-B	1
50	Pin	159 x 2	1
51	Brake Lever (50-54-55-56)	*AS7330M1	1
52	Brake Shoe (53)	*AS7325M1	1
53	Brake Lining	PT7326M1	1
54	Rubber Bumper	PT387NK1	1
55	Pin	159 x 3	1
56	Spring	162 x 7	1

FEED CONTROL & SELECTOR BLOCKS



Serial Number of Vertical Milling Machine and Unit Code number "MUST" accompany order.

Unit Code Number Stamped Here.

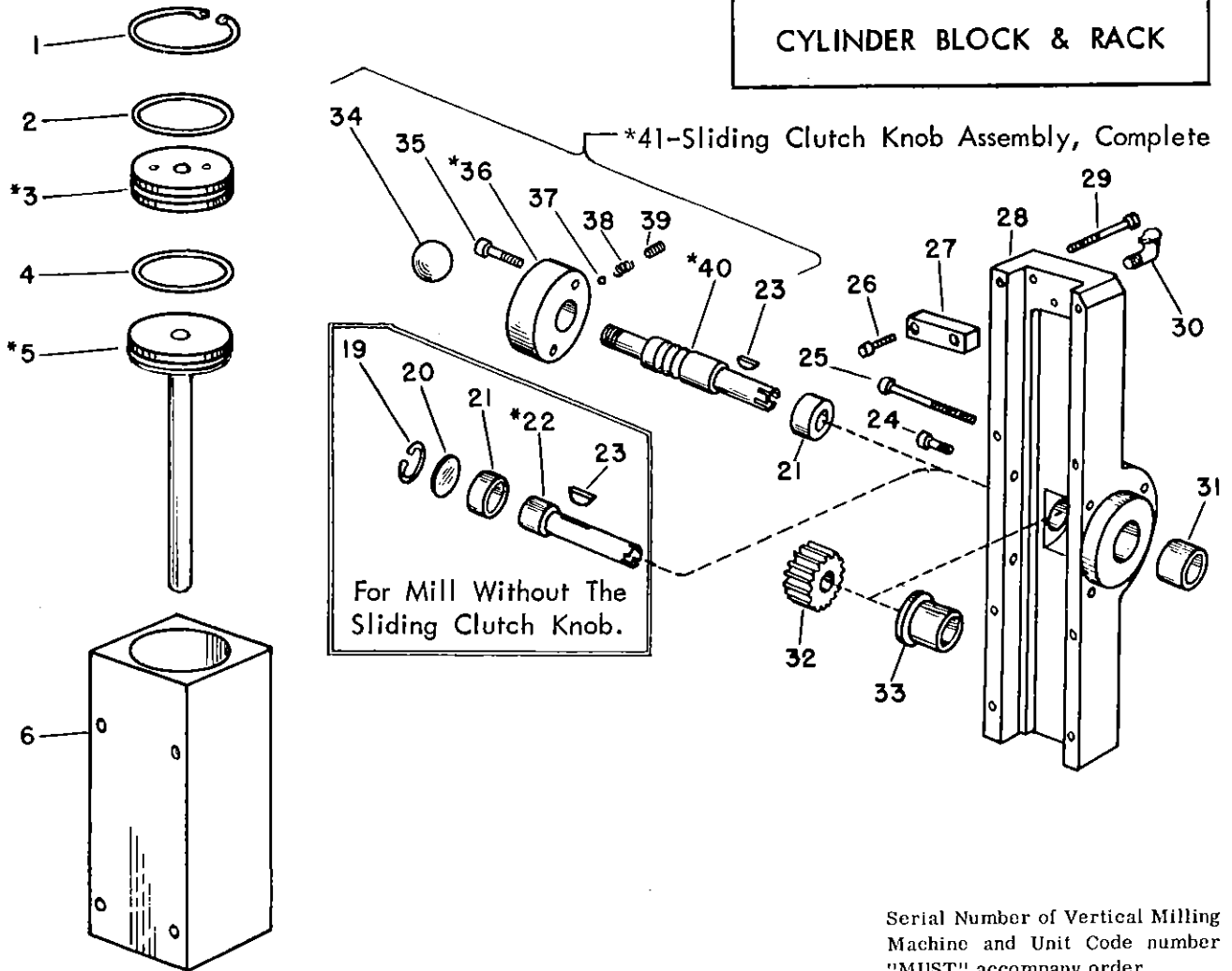
*Available only as sub-assembly. Parts included are indicated by the item numbers appearing in parenthesis after part name.

Cylinder Block - For Cylinder Block Assembly. See Form 1901

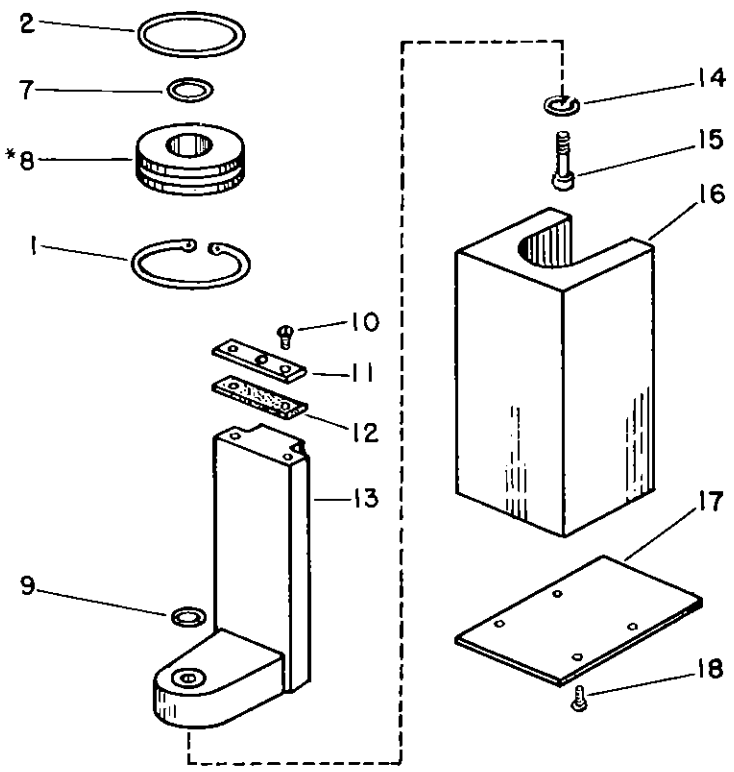
PARTS ILLUSTRATED ON THIS PAGE ARE FOR UNIT CODE NO. MHF 10 3

Item No.	Part Name	Part No.	No. Req.
1	Drive Screw	132 x 2	2
2	Quill Feed Plate (1)	*AS7344M1	1
3	Screw	PT489NH1	1
4	Spring	162 x 5	1
5	Steel Ball	172 x 16	1
6	Bakelite Ball	PT3131NR1	1
7	Feed Control Handle	PT7337M1	1
8	Feed Control Collar (*2-3 4-5-22)	*AS7336M1	1
9	Cap Screw	114 x 712	6
10	Bleeder Valve	PA7395M1	1
11	Feed Control Head (13-23)	*AS7333M2	1
12			
13	"O" Ring	193 x 24	1
14	"O" Ring	193 x 5	6
15	Feed Control Shaft (14)	*AS7334M1	1
16	Spring	162 x 30	1
17	Pin	160 x 54	1
18	Feed Control Valve	PT7335M2	1
19	Cap Screw	114 x 32	12
20	Feed Control Block	PT7332M2	1
21	Pipe Plug	PT1510-1	10
22	Set Screw	120 x 6	1
23	Pin	160 x 47	1
24	Drive Screw	132 x 100	4
25	Rapid Traverse Feed Plate (24)	*AS7342M2	1
26	Knob (34)	*AS7356M1	1
27	Bushing	PT7339M2	1
28	Valve (29-30)	*AS7338M2	1
29	Cone Point	PT7355M1	1
30	"O" Ring	193 x 7	2
31	Orifice	PT7345M1	1
32	Pin	160 x 54	2
33	Feed Selector Block	PT7331M3	1
34	Set Screw	120 x 904	2
35	Set Screw	120 x 906	2
36	Feed Control Plate (24)	*AS7343M1	1
37	Feed Selector Dial (34-35- *36-38)	*AS7368M1	1
38	Shoe	PT4809RH1	1
39	Feed Control Needle (40)	*AS7370M1	1
40	Valve Seat	PT7317M1	1

CYLINDER BLOCK & RACK



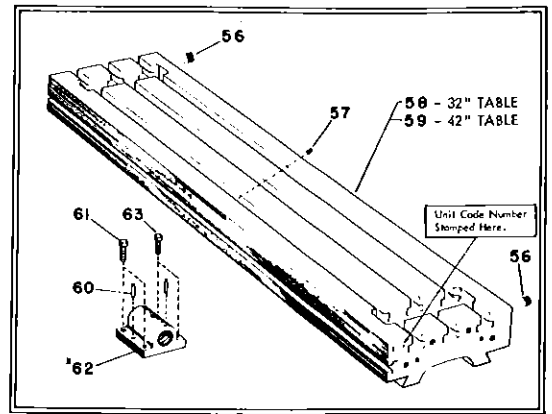
Serial Number of Vertical Milling Machine and Unit Code number "MUST" accompany order.



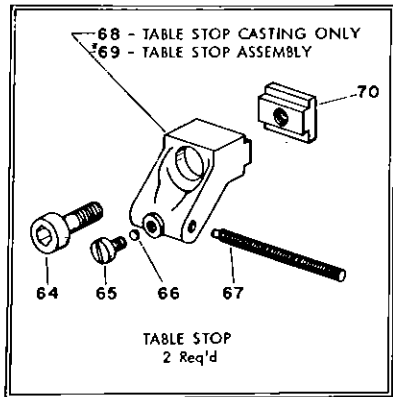
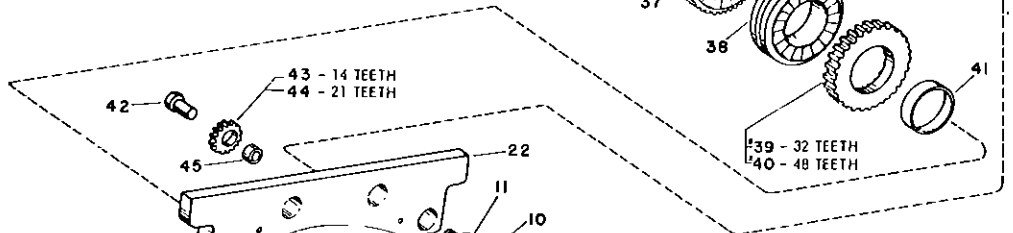
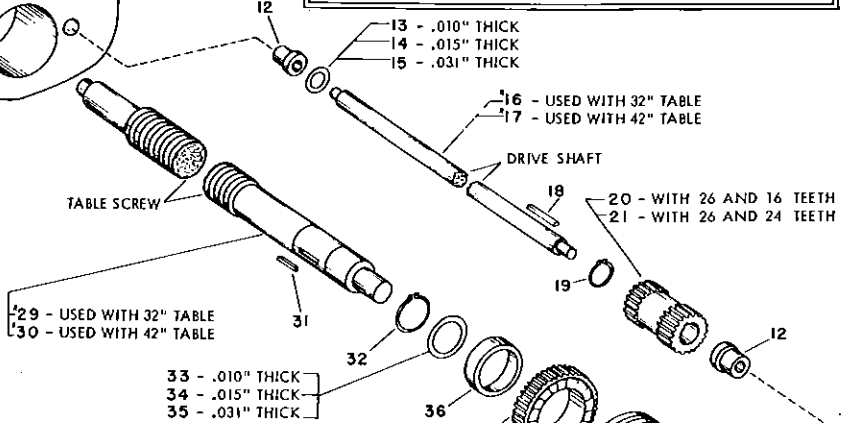
*Available only as sub-assembly. Parts included are indicated by the item numbers appearing in parenthesis after part name.

Item No.	Part Name	Part No.	No. Req.
1	Retaining Ring	165 x 301	2
2	"O" Ring	193 x 134	2
3	Piston Cap - Top (2)	*AS7379M2	1
4	"O" Ring	193 x 133	1
5	Piston (4)	*AS7378M1	1
6	Cylinder Block	PT7376M1	1
7	"O" Ring	193 x 10	1
8	Piston Cap - Bottom (2-7)	*AS7380M2	1
9	Washer	166 x 6	0-1-2
10	Screw	101 x 108	2
11	Wiper Plate	PT7385M1	1
12	Felt Wiper	PT7384M1	1
13	Rack (9-10-11-12-14-15)	*AS7377M1	1
14	Lock Washer	180-300	1
15	Cap Screw	114 x 16	1
16	Rack Housing Cover	PT7394M1	1
17	Housing Cover	PT7401M1	1
18	Screw	103 x 208	4
19	Tru-arc Ring	165 x 303	1
20	Thrust Bearing	PT7382M1	1
21	Bushing - Front	PT7383M1	1
22	Rack Pinion Shaft (23)	*AS7386M1	1
23	Key	PT2077	1
24	Cap Screw	114 x 10	2
25	Cap Screw	114 x 44	2
26	Cap Screw	114 x 712	2
27	Rack Cover Block	PT7354M1	1
28	Rack Pinion Shaft Housing	PT7393M1	1
29	Cap Screw	114 x 24	8
30	Oiler	155 x 53	1
31	Bushing - Rear	PT7388M1	1
32	Quill Rack Gear	PT7357M1	1
33	Flange Bushing	PT7387M1	1
34	Bakelite Ball	PT406NT1	1
35	Cap Screw	114 x 16	2
36	Retaining Plate (37-38-39)	*AS7381M1	1
37	Steel Ball	172 x 12	1
38	Spring	PT3639LH1	1
39	Set Screw	120 x 4	1
40	Rack Pinion Shaft (23)	*AS7386M2	1
41	Sliding Clutch Knob Assembly (34-35-*36-*40)	*AXS7381M1	1

TABLE
Power Feed



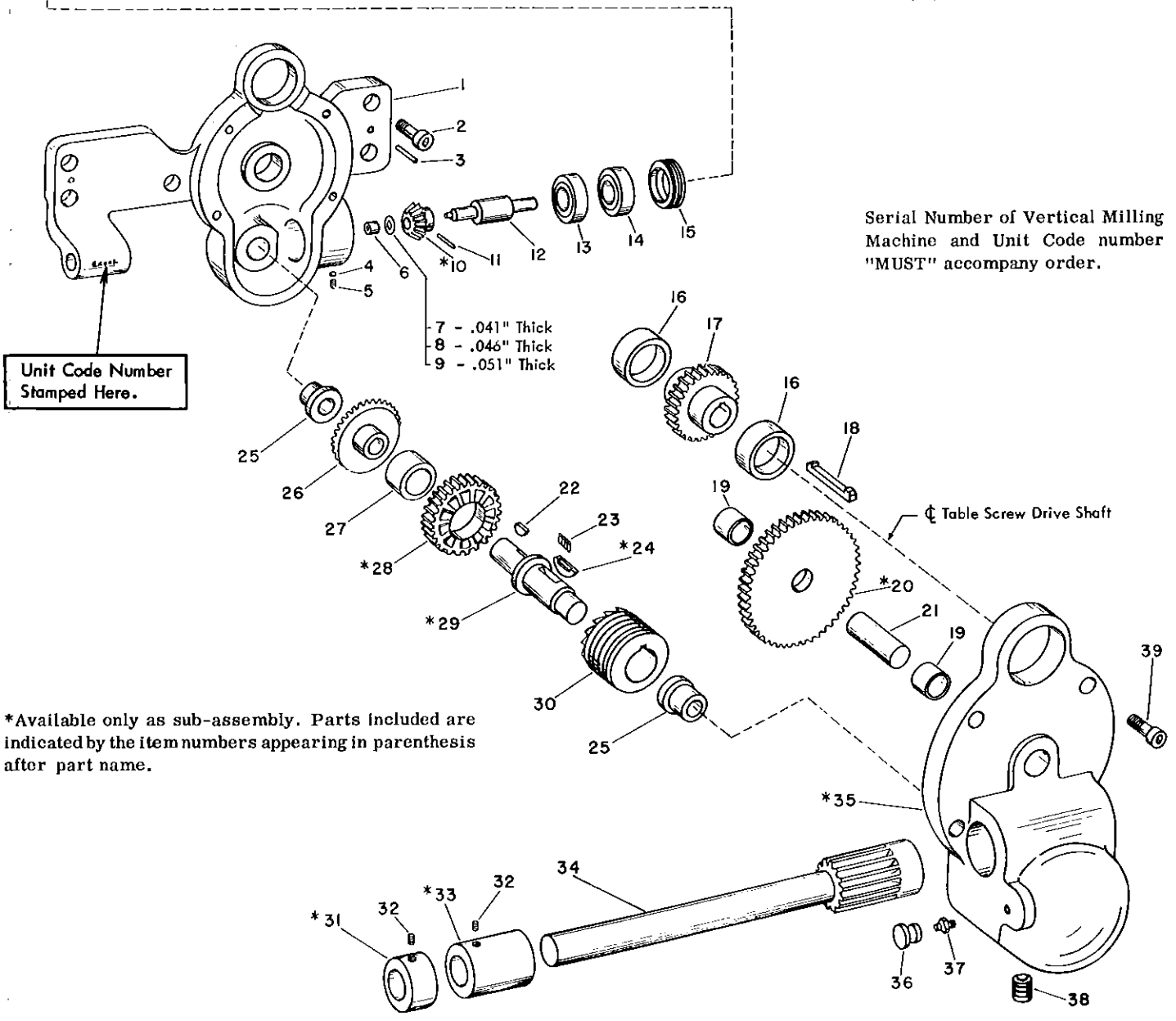
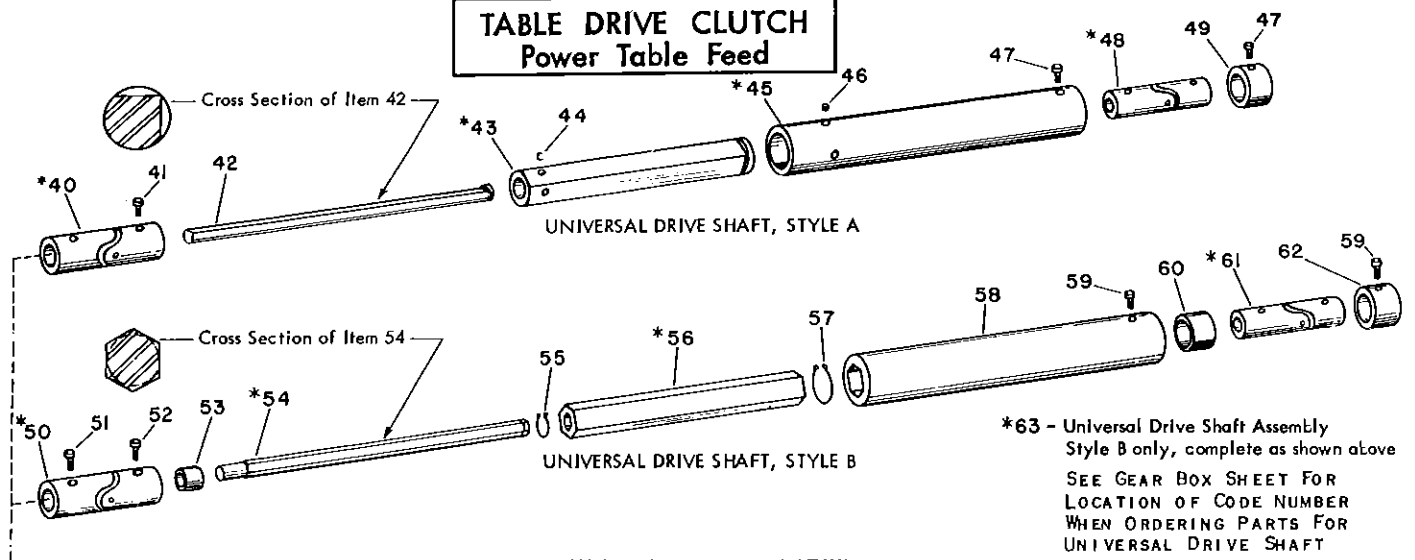
Serial Number of Vertical Milling Machine and Unit Code number "MUST" accompany order.



*Available only as sub-assembly. Parts included are indicated by the item numbers appearing in parenthesis after part name.

Item No.	Part Name	Part No.	No. Req.
1	Handwheel (2-3-28)	*AS7092M2	2
2	Stud	PT1246	2
3	Handle	PT1496	2
4	Graduated Collar (25-26-27)	*AS7018M1	2
5	Truarc Ring	165x101	1
6	Spacer	PT7102M1	1
7	Truarc Ring	165x402	1
8	Bearing	PT7098M1	1
9	L. H. Table Bracket (8-10-11-12)	*AS7028M2	1
10	Pin	153x1	4
11	Cap Screw	114x216	8
12	Oilite Bearing	PT7470M1	2
13	Precision Washer	PT7584 1010	
14	Precision Washer	PT7584 1015	
15	Precision Washer	PT7584 1031	
16	Screw Drive Shaft (18)	*AS7460M132	1
17	Screw Drive Shaft (18)	*AS7460M142	1
18	Key	PT7462M1	1
19	Truarc Ring	165x62	1
20	Drive Pinion Cluster	PT7461M1	1
21	Drive Pinion Cluster	PT7461M2	1
22	R. H. Table Bracket	Write for Information	
23	Oiler	155x17	2
24	Oilite Bearing	PT7478M1	1
25	Shoe	PT1080NK1	2
26	Pin	160x25	2
27	Thumb Screw	PT1857	2
28	Roll Pin	159x5	2
29	Table Screw (5-6-31-32)	*AS7459M132	1
30	Table Screw (5-6-31-32)	*AS7459M142	1
31	Key	PT7464M1	1
32	Truarc Ring	165x100	1
33	Precision Washer	PT7592 2210	
34	Precision Washer	PT7592 2215	
35	Precision Washer	PT7592 2231	
36	Oilite Bearing	PT687FH1	1
37	Screw Feed Gear (36)	*AS7463M1	1
38	Screw Feed Clutch	PT7465M1	1
39	Reverse Gear (41)	*AS7466M1	1
40	Reverse Gear (41)	*AS7466M2	1
41	Oilite Bearing	PT7467M1	1
42	Stud	PT7469M1	1
43	Idler Gear (45)	*AS7472M1	1
44	Idler Gear (45)	*AS7472M2	1
45	Oilite Bearing	PT7471M1	1
46	Bakelite Ball	PT406NT1	1
47	Lever Stem	PT7476M1	1
48	Shift Lever (46-47-49-50-51-52)	*AS7475M2	1
49	Set Screw	126x706	1
50	Roll Pin	159x3	1
51	Spring	162x62	1
52	Steel Ball	172x20	1
53	Feed Shaft Pinion Shaft	PT7474M2	1
54	Feed Shaft Pinion	PT7473M1	1
55	Set Screw	121x1008	1
56	Pipe Plug	152x63	2
57	Set Screw	120x4	1
58	Milling Machine Table	Write for Information	
59	Milling Machine Table	Write for Information	
60	Pin	PT1833-1	2
61	Cap Screw	114x214	2
62	Table Nut (60-61-63)	*AS7022M1	1
63	Cap Screw	112x224	2
64	Cap Screw	114x216	2
65	Thumb Screw	PT1857	2
66	Shoe	PT1078NK1	2
67	Stop Screw	PT1224NH1	2
68	Table Stop	PT7477M1	2
69	Table Stop Assembly (64-65-66-67-70)	*AS7477M1	2
70	Tee Slot Nut	PT7120M1	2

**TABLE DRIVE CLUTCH
Power Table Feed**



Unit Code Number
Stamped Here.

- 7 - .041" Thick
- 8 - .046" Thick
- 9 - .051" Thick

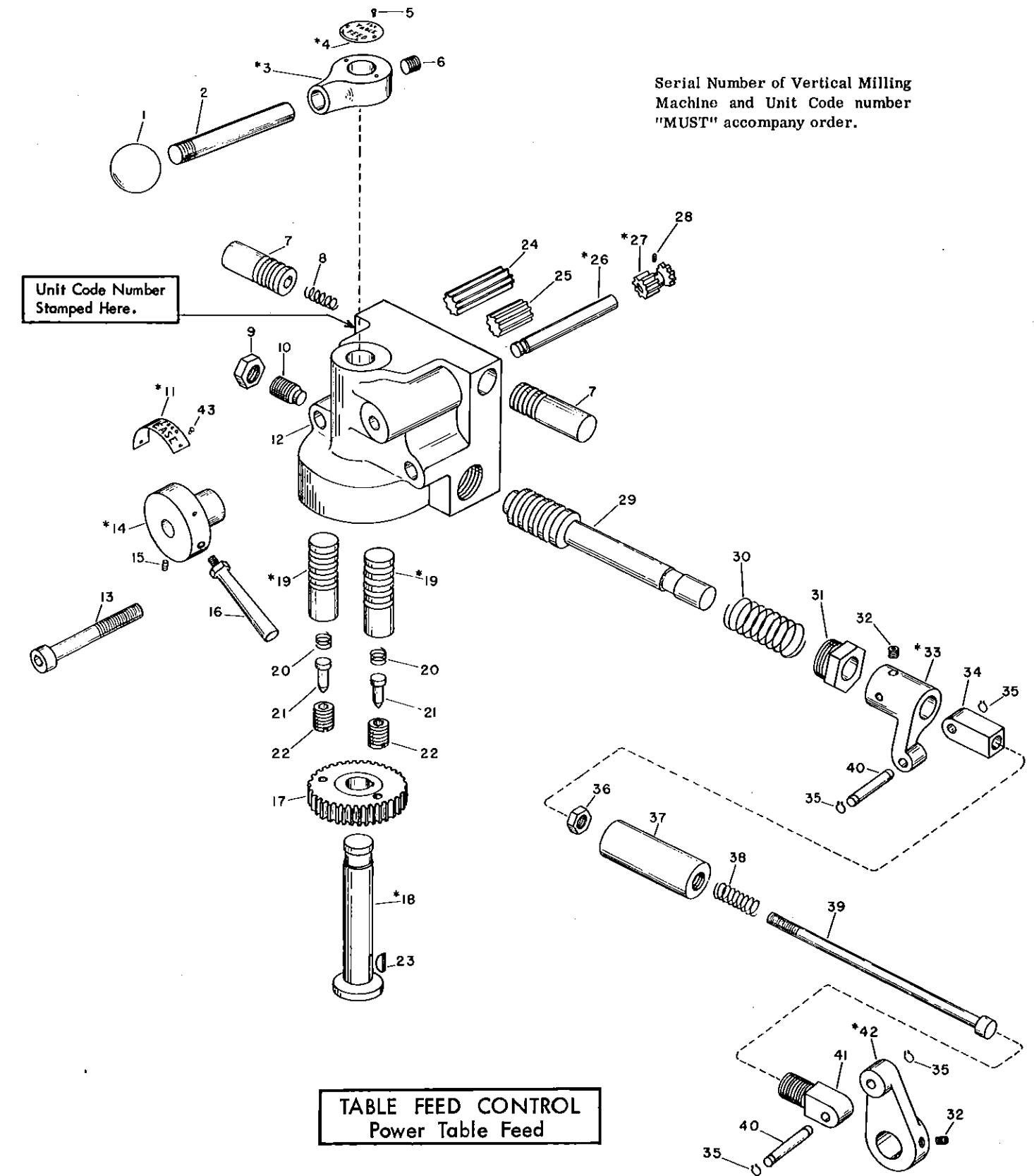
*Available only as sub-assembly. Parts included are indicated by the item numbers appearing in parenthesis after part name.

Item No.	Part Name	Part No.	No. Req.
1	Gear Housing	PT7435M1	1
2	Cap Screw	114x216	5
3	Pin	153x1	2
4	Shoe	PT1078NK1	1
5	Set Screw	120x903	1
6	Oilite Bearing	PT7440M1	1
7	Precision Washer	PT75828041	
8	Precision Washer	PT75828046	
9	Precision Washer	PT75828051	
10	Bevel Gear Pinion (11)	*AS7442M1	1
11	Roll Pin	159x9	1
12	Bevel Gear Pinion Shaft	PT7441M1	1
13	Bearing	PT7443M1	1
14	Bearing	PT7444M1	1
15	Adjusting Nut	PT7445M1	1
16	Oilite Bearing	PT7437M1	2
17	Screw D.S. Gear	PT7454M1	1
18	Key	PT7455M1	1
19	Bronze Bearing	PT4764T1	2
20	Idler Gear (21)	*AS7453M1	1
21	Pin	160x266	1
22	Key	PT2070-1	1
23	Roller - Price per set of 4	AS7451M1	1 set
24	Roller Feather Key (23)	*AS7450M1	1
25	Oilite Bearing	PT7439M1	2
26	Bevel Gear	PT7447M1	1
27	Oilite Bearing	PT7448M1	1
28	Driven Clutch Gear (27)	*AS7449M1	1
29	Clutch Drive Shaft (22-24)	*AS7446M1	1
30	R.G.Driver Clutch	PT7452M1	1
31	Pinion Shaft Collar (32)	*AS7458M1	1
32	Set Screw	120x4	2
33	Pin, Shaft Ext. Collar (32)	*AS7457M1	1
34	Clutch Pinion Shaft	PT7456M1	1
35	Housing Cover	PT7436M1	1
36	Lubricap	PT7187	1
37	Alemite Fitting	190x1641	1
38	Pipe Plug	PT1510-1	1
39	Cap Screw	114x12	4
40	Universal Joint, Clutch End (41)	*AS7479M1	1
41	Cap Screw	114x608	2
42	Small Telescope Section	PT7484M1	1
43	Telescope Section (44)	*AS7483M1	1
44	Key	PT7481M1	2
45	Large Telescope Section (46)	*AS7482M1	1
46	Key	PT7480M1	2
47	Cap Screw	114x605	2
48	Universal Joint, Gear Box End (47)	*AS7485M1	1
49	Bushing	PT7486M1	1
50	Universal Joint, Clutch End (51-52-53)	*AS7479M2	1
51	Cap Screw	114x608	1
52	Cap Screw	114x708	1
53	Bushing	PT7541M1	1
54	Small Telescope Section (55)	*AS7484M2	1
55	Truarc Ring	165x800	1
56	Telescope Section (57)	*AS7483M2	1
57	Truarc Ring	165x801	1
58	Large Telescope Section	PT7482M2	1
59	Cap Screw	114x605	2
60	Bushing	PT7540M1	1
61	Universal Joint, Gear Box End (59)	*AS7485M2	1
62	Bushing	PT7486M1	1
63	Universal Drive Shaft Assembly (*50-*54-*56-58-60-*61-62)	*AXS7484M2	1

Serial Number of Vertical Milling Machine and Unit Code number "MUST" accompany order.

Unit Code Number Stamped Here.

TABLE FEED CONTROL
Power Table Feed



*Available only as sub-assembly. Parts included are indicated by the item numbers appearing in parenthesis after part name.

Item No.	Part Name	Part No.	No. Req.
1	Bakelite Ball	PT406NT1	1
2	Handle	PT7411M1	1
3	Feed Lock Lever (2-*4-6)	*AS7412M1	1
4	Table Feed Plate (5)	*AS7413M1	1
5	Drive Screw	130 x 3	4
6	Set Screw	120 x 5	2
7	Plunger Rack	PT7424M1	2
8	Spring	162 x 7	1
9	Jam Nut	139 x 27	1
10	Set Screw	121 x 212	1
11	Feed Release Plate (5)	*AS7418M1	1
12	Feed Lock Housing	PT7410M1	1
13	Cap Screw	114 x 140	2
14	Release Shaft Hub (*11-15-16)	*AS7415M1	1
15	Set Screw	120 x 906	2
16	Handle	PT7074M2	1
17	Push Rod Pin. Gear	PT7421M1	1
18	Feed Lock Shaft (23)	*AS7414M1	1
19	Plunger Rack Lock (20-21-22)	*AS7425M1	2
20	Spring	162 x 25	2
21	Plunger	PT7426M1	2
22	Plunger Retainer	PT7427M1	2
23	Key	PT2070-1	1
24	Rack Pinion - Long	PT7420M1	1
25	Rack Pinion - Short	PT7419M1	1
26	Pinion Shaft (*27)	*AS7416M1	1
27	Feed Release Pinion (28)	*AS7417M1	1
28	Roll Pin	159 x 8	1
29	Push Rod	PT7422M1	1
30	Spring	162 x 37	1
31	Rod Retainer	PT7423M1	1
32	Set Screw	120 x 4	4
33	Push Rod Off - Set (32)	*AS7428M1	1
34	Nut Tongue	PT7429M1	1
35	Truarc Ring	165 x 18	4
36	Hex. Nut	138 x 23	1
37	Con. Rod Sleeve	PT7431M1	1
38	Spring	162 x 49	1
39	Stop Rod	PT7430M1	1
40	Pivot Pin	PT7434M1	2
41	Screw Tongue	PT7432M1	1
42	Crank (32)	*AS7433M1	1
43	Pop Rivet	134 x 4	1