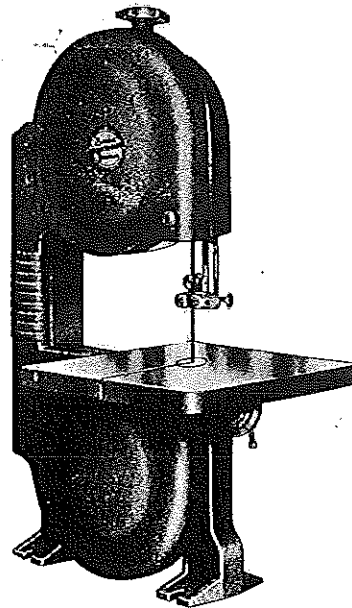


OPERATING INSTRUCTIONS and PARTS LIST



Darra-James

9 $\frac{1}{4}$ inch BAND SAW



MODEL NO. 385-C

This number is on Model Number Plate of your machine. Always mention this number when communicating with us in regard to this machine or ordering parts.

HOW TO ORDER PARTS

All parts listed herein can be ordered from the factory:

Always be sure to give the following information when ordering parts:

1. The Part Number in this list (not index number).
2. The Part Name in this list.
3. The Model Number of your machine.

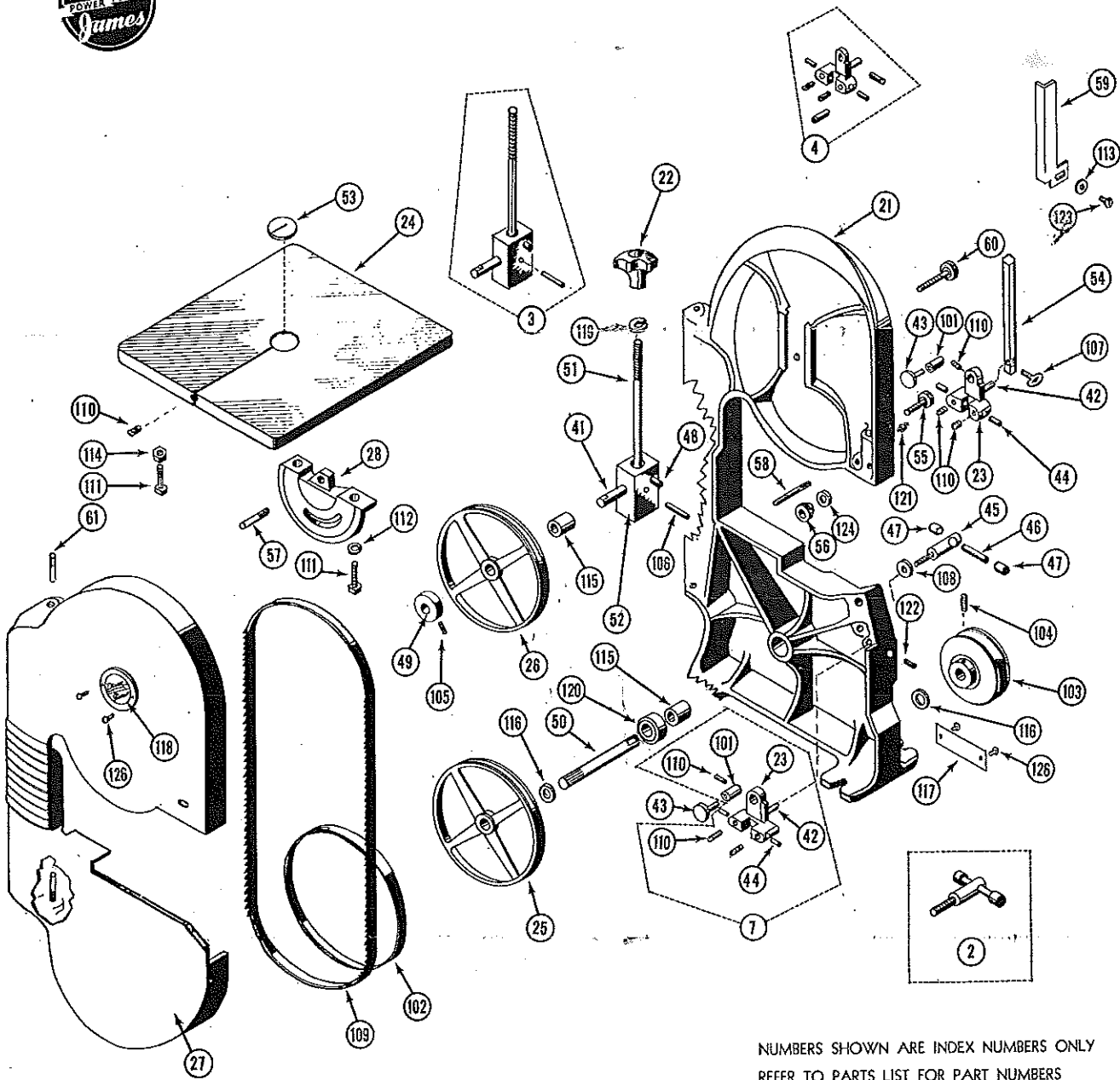
THIS LIST IS VALUABLE. KEEP IT WITH YOUR VALUABLE PAPERS

TOOLKRAFT CORPORATION

SPRINGFIELD, MASS.



9 1/4 inch BAND SAW MODEL 385-C



NUMBERS SHOWN ARE INDEX NUMBERS ONLY
REFER TO PARTS LIST FOR PART NUMBERS
ALWAYS ORDER PARTS BY PART NUMBERS

FIGURE 1

UNPACKING

Your Band Saw comes complete in a corrugated carton. When unpacking, be sure and check all packing material for parts before discarding.

ASSEMBLY

Band Saw is shipped completely assembled excepting table. To mount table simply insert the pivot pin (Index No.57) through hole in rear of frame and insert table lock (Index No. 45) through slot in trunnion and tighten to lock table in desired position.

Fasten securely on a level workbench or power tool stand.

Be sure the blade is assembled so that the teeth are pointing downward toward the table.

Motor can be mounted in the rear or underneath the workbench or stand.

ADJUSTMENTS

Check alignment of blade so that it travels on the center of the wheels. To adjust travel of blade, simply turn thumb screw (Index No.60) in rear of upper wheel.

To adjust tension of blade, turn knob (Index No. 22).

Backing wheel (Index No. 43) should be brought out so that it just touches back of blade. Set and fasten in position with set screw (Index No.110) holding bearing (Index No. 101)

The blade guides (Index No. 44) on the upper guide assembly should be set so they just clear the sides of the blade. These guides will hold the blade in a firm position when side pressure is applied by operator. Adjust upper Blade Guide assembly (Index No.4) by thumb screw (Index No. 107).

Adjust the backing wheel and guide assemblies to the depth of cut desired with Thumb Screw (Index No.55). Keep as close to your work as possible in order to prevent blade from creeping.

OPERATIONS

To change blade (Index No.109) remove screw in table (Index No.110) then remove knurled thumb knob (Index No. 56) and swing blade guard to the left. Loosen tension by turning knob (Index No. 22) and then remove blade. When changing blades of various widths, do not fail to realign the blade to the center of the wheels and readjust blade guides so the blade will track properly.

To tilt the table, loosen table lock (Index No. 45) and tilt to desired angle.

Blade must travel in a clockwise direction.

LUBRICATION

1. The ball bearing (Index No.120) in the lower wheel is grease packed at assembly and needs no further lubrication for the life of the bearing.
2. Use a light machine oil on bronze bearings (Index No. 101 and Index No. 115) and on other friction points.

SPECIFICATIONS

Blade - Size 1/4" x 60"

Saw Pulley - 4" diameter 1/2" Bore "A" type V Pulley

Motor - Recommended 1/4 or 1/3 H.P., 1725 R.P.M.

Motor Pulley - Recommended 2" diameter "A" type V Pulley

HOW TO ORDER REPAIR PARTS

To have your order filled promptly and correctly, please furnish all the following information:

1. Model Number of machine.
2. Part Number, name and description of part.
(See List)

You pay charges from shipping point. In all cases any excess payment will be refunded. Minimum order \$1.00. Terms on repair orders are cash with order, or C.O.D. Not responsible for customer errors. Prices subject to change without notice.

INDEX NO.	PART NO.	NAME OF PART	UNITS PER ASSEMBLY	LIST PRICE	INDEX NO.	PART NO.	NAME OF PART	UNITS PER ASSEMBLY	LIST PRICE
2	750-152	Lock (Table) assy.	1	1.00	118	XM-808	Plate (Name)	1	.25
3	595A-2	Block (Wheel Guide) assy.	1	1.95	119	XW-555	Washer (Lock)	1	.15
4	385C-4	Bracket (Upper Blade Guide)			120	XB-601	Ball Bearing <i>6201-LL-8</i>	1	2.10
		assy.	1	2.30	121	385C-80	Spring	1	.20
7	385B-7	Bracket (Lower Blade Guide)			122	XS-85	Screw (Slot. Hd.)	1	.15
		assy.	1	2.25	123	XS-86	Screw (Rd. Hd.)	1	.15
21	385C-21	Frame	1	17.00	124	XW-430	Washer (Fibre)	1	.15
22	385B-37	Knob (Saw Tension)	1	.95	126	XS-1	Parker Kalon Drive Screw	4	.15
23	385B-5	Bracket (Blade Guide)	2	1.50					
24	385C-24	Table	1	7.75					
25	385-C-25	Wheel (Lower)	1	4.40					
26	385C-26	Wheel (Upper)	1	4.60					
27	385C-27	Guard	1	9.70					
28	385C-28	Trunnion	1	2.25					
41	385B-32	Shaft (Upper Wheel)	1	.50					
42	385C-42	Pin (Guide Bracket)	2	.20					
43	385B-36	Wheel (Blade Backing)	2	.95	109	385-79J	Blade, 1/8"x60", 6 Teeth	1	1.25
44	385-44	Guide (Blade)	4	.20		385-79A	Blade, 3/16"x60", 6 T	1	1.25
45	750-14	Lock (Table)	1	.70		385-79B	Blade, 1/4"x60", 6 T	1	1.30
46	36-66	Handle (Table Lock)	1	.15		385-79C	Blade, 5/16"x60", 6 T	1	1.35
47	36-66-1	Cap (Table Lock Handle)	2	.15		385-79K	Blade, 3/8"x60", 6 T		1.45
48	XM-936	Pin (Wheel Guide Block)	1	.20		385-79D	Blade, 1/4"x60", 4 T Skip Tooth	1	1.50
49	50-18	Collar	1	.25		385-79E	Blade, 1/4"x60", 12 T Metal		
50	385C-50	Shaft (Lower Wheel)	1	.95			Cutting		1.95
51	385B-104	Screw (Saw Tension)	1	.30		385-79F	Blade, 1/4"x60", 14 T Metal		
52	385C-52	Block (Wheel Guide)	1	.80			Cutting		1.95
53	218-43	Plate (Table Insert)	1	.25		385-79H	Blade, 1/4"x60", 18 T Metal		
54	385C-54	Shaft (Guide)	1	.60			Cutting		1.95
55	385C-55	Screw (Knurled Head)	1	.40		385-79M	Blade, 1/4"x60", 32 T Tile &		
56	385C-56	Nut (Knurled)	1	.25			Metal Cutting		1.95
57	XM-944	Pin (Trunnion Pivot)	1	.25			MOTORS: see Motor Bulletin		
58	385C-58	Stud (Guard Locking)	1	.25			PULLEY (Motor) (See Price List)		
59	385C-59	Guard (Blade)	1	.40	372	STAND		14.75	
60	385C-60	Screw (Knurled Head)	1	.30			V-Belt "A" Type (See Price List)		
61	XM-929	Pin (Guard Hinge)	2	.20					
101	XB-750	Bearing (Bronze)	2	.30					
102	385-53	Band (Rubber Wheel)	2	.80					
103	2010	Pulley (4"x1/2")	1	1.30					
104	XS-52	Screw (Soc. Hd.)	1	.15					
105	XS-7	Screw (Soc. Hd.)	1	.15					
106	XM-895	Pin (Roll)	1	.15					
107	XS-46	Screw (Thumb)	1	.15					
108	XW-435	Washer (Fiber)	1	.15					
109	385-79B	Blade 1/4"x60"	1	1.30					
110	XS-97	Screw (Slot. Hd.)	7	.15					
111	XS-32	Screw (Hex. Hd.)	3	.15					
112	XW-407	Washer (Lock)	2	.15					
113	XW-422	Washer	1	.15					
114	XN-220	Nut (Hex. Jam)	1	.15					
115	XB-614	Bearing (Bronze) <i>AA-62B</i>	2	.40					
116	XW-576	Washer (Fibre)	2	.15					
117	XM-807	Plate (Model No.)	1	.25					

- ACCESSORIES -

BAND SAW BLADES

109	385-79J	Blade, 1/8"x60", 6 Teeth	1	1.25
	385-79A	Blade, 3/16"x60", 6 T	1	1.25
	385-79B	Blade, 1/4"x60", 6 T	1	1.30
	385-79C	Blade, 5/16"x60", 6 T	1	1.35
	385-79K	Blade, 3/8"x60", 6 T		1.45
	385-79D	Blade, 1/4"x60", 4 T Skip Tooth	1	1.50
	385-79E	Blade, 1/4"x60", 12 T Metal		
		Cutting		1.95
	385-79F	Blade, 1/4"x60", 14 T Metal		
		Cutting		1.95
	385-79H	Blade, 1/4"x60", 18 T Metal		
		Cutting		1.95
	385-79M	Blade, 1/4"x60", 32 T Tile &		
		Metal Cutting		1.95
		MOTORS: see Motor Bulletin		
		PULLEY (Motor) (See Price List)		
372	STAND			14.75
		V-Belt "A" Type (See Price List)		

1/4" x 60" blade

1/2" x 5 1/8"

7/8" long