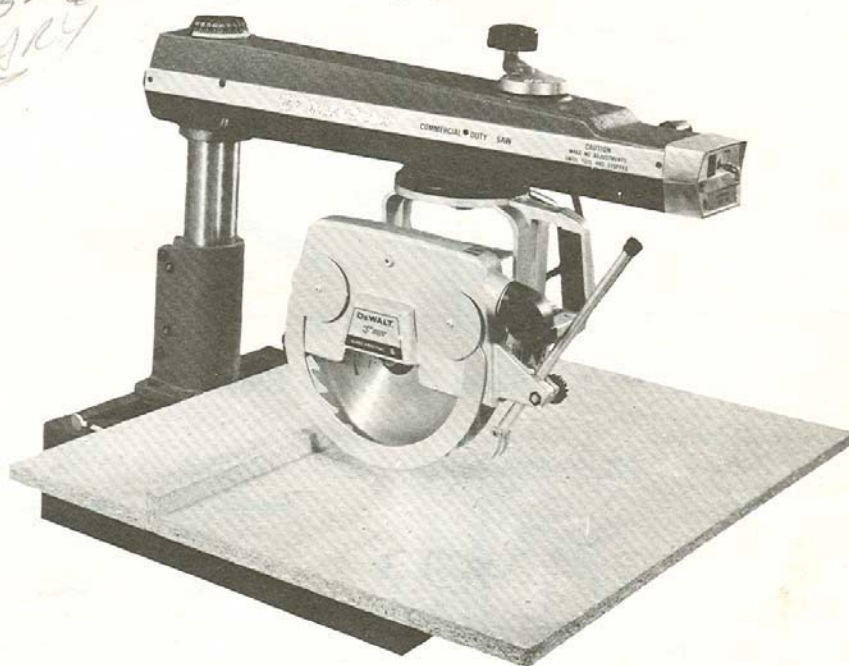


DeWalt® Parts Bulletin

226-3601 →
243-6556
GARY

228-9631
17th Nov 50hrs



Black & Decker®

This booklet is provided to aid in obtaining service parts. Operational and maintenance information is contained in a separate manual (Form No. 722395) which is available through your local service outlet.

No. 770
10" Radial Arm Saw
CAT. NOS. 7770/3427
TYPE 7
Bulletin No. 8765

77070375
51N

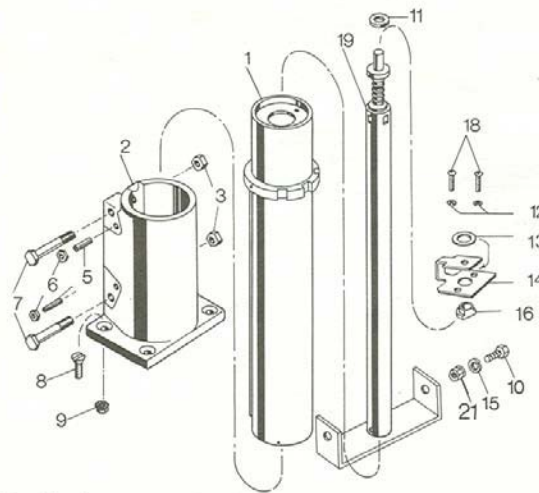
UNIT IDENTIFICATION

10" Radial Arm Saws

Model No.	Type	Voltage		Phase
7770/3427	Type 7	120/208-240V	60 Hz	1 ph.
7770-01/3427-01	Type 7	120/230-250V	50 Hz	1 ph.
7770-03	Type 7	120/220-240V	50 Hz	1 ph.
7770-06	Type 7	120/240V	50/60 Hz	1 ph.
7770-07/3427-07	Type 7	120/240V	50/60 Hz	1 ph.

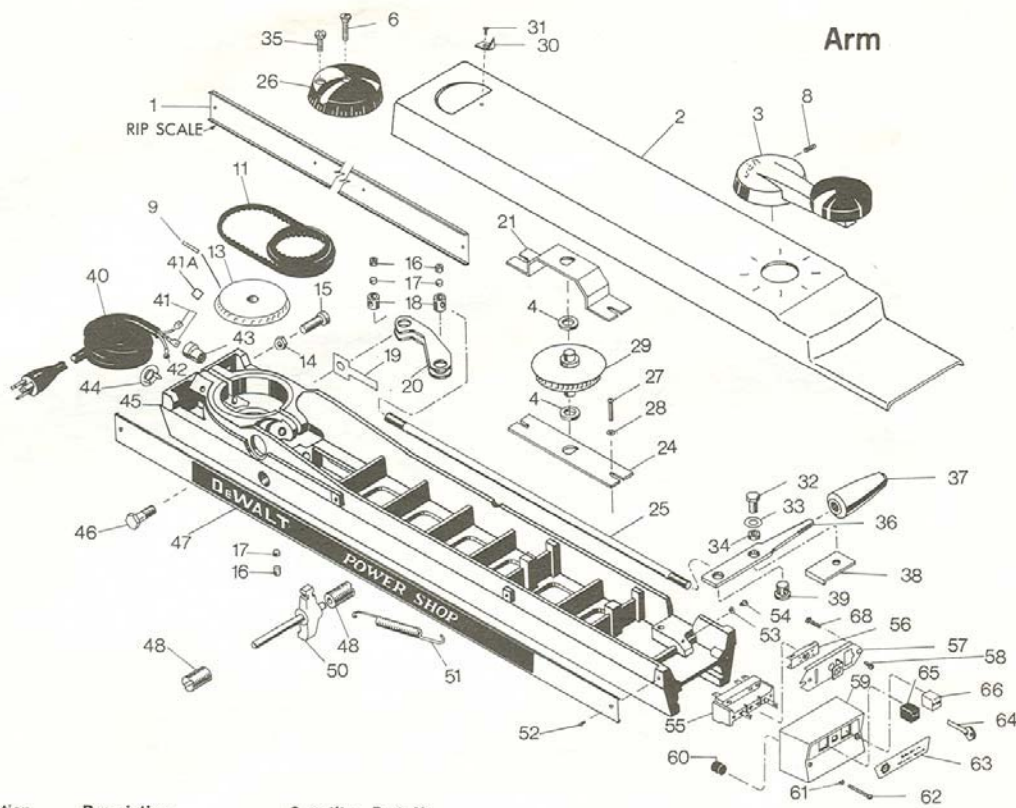
S/N 730 703 75

Base, Column & Elevating Screw



Identification	Description	Quantity	Part No.
1	Column	1	81232
2	Base	1	121372
3	Jam Nut (5/16-18)	2	81956

Identification	Description	Quantity	Part No.
5	Flat Pt. Screw (1/4-20 x 1 1/8")	2	80935
6	Hex Nut (1/4-20)	2	83944
7	Hex Hd. Cap Screw (5/16-18 x 2 1/2")	2	72382
8	Hex Hd. Cap Screw (3/8-16 x 1 1/4")	4	82105
9	Hex Nut (3/8-16)	4	83722
10	Screw (3/8-16 x 3/4")	2	82098
11	Washer, Shim .005"	AR	103564
	Washer, Shim .010"	AR	100245
12	Lock Washer (1/4")	2	84173
13	Washer	1	121451
14	U Bracket SA (Includes 16)	1	71913
15	Lock Washer	2	82510
16	Bracket Bushing	1	81270
18	Rd. Hd. Mach. Screw (1/4-20 x 1") (Phillips)	2	82286
19	Elevating Mechanism	1	81233-04
21	Hex Nut (3/8-16)	2	81986



Identification	Description	Quantity	Part No.
1	Rip Scale (Cat. Nos. 7770, 3427, 7770-01, 3427-01, 7770-06, 7770-07, 3427-07)	1	96945
	Rip Scale (Cat. No. 7770-03)	1	96945-01
2	Arm Shroud (Includes 67)	1	96949
3	Elev. Arm Assembly (Include 8)	1	71917
4	Shim Washer	2	62518
6	Oval Hd. Mach. Screw	1	72656
8	Cup Pt. Set Screw (1/4-20 x 1/2")	1	80648
9	Roll Pin (3/16 x 1)	1	82034
11	Timing Belt	1	81273
13	Timing Belt Sprocket	1	121468
14	Jam Nut (5/16-18)	2	80467
15	Soc. Hd. Cap Screw (5/16-18 x 1 1/4")	2	82172
16	Cup Pt. Set Screw (1/4-20 x 1/4")	4	82387
17	Set Screw Slug	4	103522
18	Clamp Lever Pin	2	81261
19	Wear Spring	1	81263
20	Arm Clamp Cam	1	86526
21	Upper Bracket	1	71916
24	Lower Bracket	1	71915
25	Clamp Rod	1	81260
26	Miter Scale	1	71918
27	Rd. Hd. Machine Screw (10-24 x 1/2") (Phillips)	2	82721
28	Flat Washer (1/2 O.D. x 7/32" I.D.)	2	80670
29	Shaft & Sprocket	1	71911
30	Pointer	1	96948
31	Pointer Screw	1	80488
32	Hex Hd. Cap Screw (5/16-18 x 5/8")	1	82144
33	Washer	1	80457
34	Spacer	1	81257
35	Pan Hd. Screw (5/16-18 x 1")	1	99250-18
36	Control Handle	1	81255
37	Handle Grip	1	80066
38	Handle Guard	1	81258
39	Pivot Pin	1	81259

Identification	Description	Quantity	Part No.
40	Cord & Plug (Includes 41, 42) (Cat. Nos. 7770-01/3427-01, 7770-03) (Cat. Nos. 7770/3427, 7770-06/3427-06, 7770-07/3427-07)	1	121452
41	Space Connectors	2	81373
41A	Insulator Box	2	81771
42	Lead Terminal	1	72268
43	Cord Bushing	1	34289
44	Adaptor	1	48822
45	Arm	1	88095
46	Hex Hd. Cap Screw (3/8-16 x 2")	1	81238-02
47	Escutcheon Plate L.S.	1	80165
48	Miter Adj. Screw	2	96933
50	Miter Latch & Pin	1	83122
51	Miter Latch Spring	1	96892
52	Pan Hd. Thd. forming Screw (6-32 x 1/4") (Phillips)	1	81266
53	External Lockwasher (#8)	8	33985
54	Pan Hd. Taprite Screw (8-32 x 3/8")	1	80488
	Switch Assembly (includes 55 through 58 and 65, 66)	1	80489
55	Switch	1	203885-01
56	Switch Slide Lock	1	203194-01
57	Switch Support & Stop	1	207061
58	Rd. Hd. Self Tap Screw (6-32 x 3/8")	1	203358
59	Arm End Cap (Includes 60)	2	83054
60	Bumper	1	80894
61	External Lockwasher (#10)	2	121341
62	Fill Hd. Mach. Screw (10-24 x 1 1/2") (Phillips)	2	82516
63	Name Plate	1	80826
64	Key	1	96951
65	Switch Button (Black)	1	85283
66	Switch Button (Red)	1	81371
67	Instruction Label	1	81371-02
68	Screw Self Tap (6-32 x 5/16")	1	96936
		2	82261

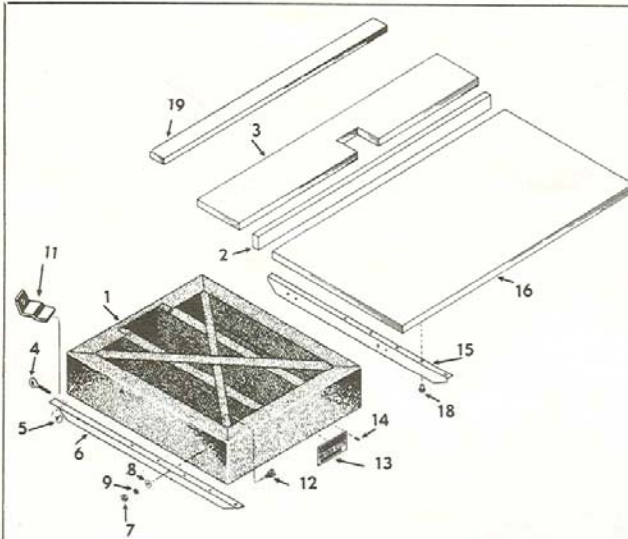
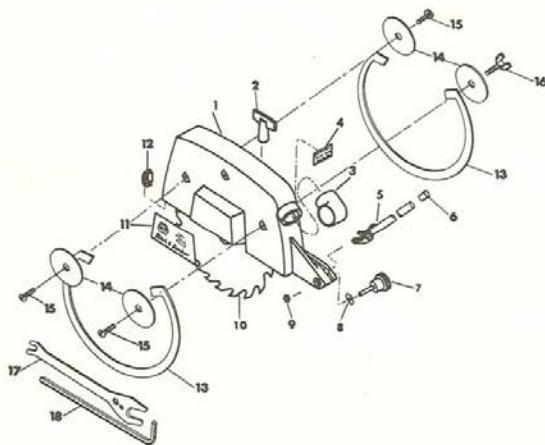


Table Top & Table Frame

Identification	Description	Quantity	Part No.
1	Table Frame	1	66312-03
2	Guide Fence	1	96615-01†
3	Back Board	1	96615-02
4	Thumb Screw	2	80455
5	Eyelet	2	80050
6	L. H. Cleat	1	72091-01
7	Hex Nut ($\frac{3}{8}$ "-16)	4	84180
8	Flat Washer ($\frac{3}{8}$ "")	4	80674
9	Lockwasher ($\frac{3}{8}$ "")	4	82510
11	Bracket	2	72086
12	Sq. Hd. Mach. Bolt ($\frac{3}{8}$ "-16 x $\frac{3}{4}$ "")	4	81911
13	Machine Name Plate	1	96942
14	Drive Screw (#4 x $\frac{3}{16}$ "")	4	12122
15	R. H. Cleat	1	72091
16	Fixed Table Board	1	96616
18	Table Screws	6	201287
19	Spacer Board	1	96615-01

† Replacement can be made from standard 1" x 2" lumber

PARTS NOT SHOWN { No. 99056-03 3/32" Hex Wrench No. 83104 1/8" Hex Wrench No. 99056-11 1/4" Hex Wrench



ASSEMBLY OF LOWER GUARD TO UPPER GUARD

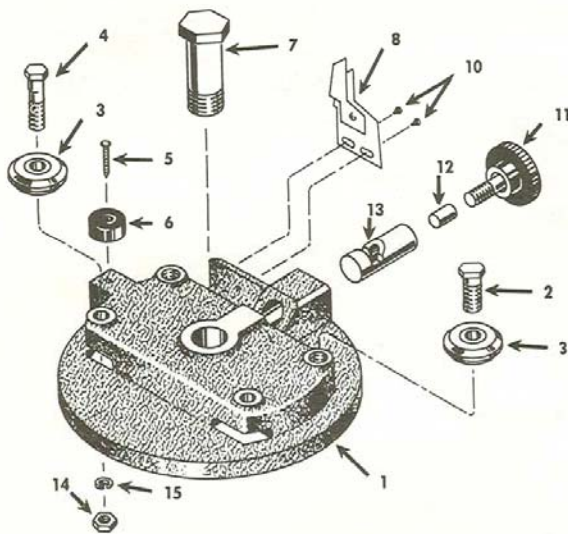
1. Hang outer ring (13) on bosses located on upper guard and mount two guard retainers (14) using two self-tapping screws (15) into pre-drilled holes on outer side of guard. Tighten screws to seat support washers.
2. Hang inner ring (13) on bosses located on guard and mount two guard retainers (14) using one self-tapping screw (15) and one thumb screw (16) on inner side of guard. Thumb screw to be used in boss nearest to kickback assembly. Tighten screw and thumb screw to seat support washers.

NOTE: It is not necessary to remove guard and blade from motor to remove or re-install the ring. To change blades remove thumb screw and washer by hand and the inner ring is easily removed. The upper guard with outer ring can be removed allowing blade to be changed.

GUARD ASSEMBLY

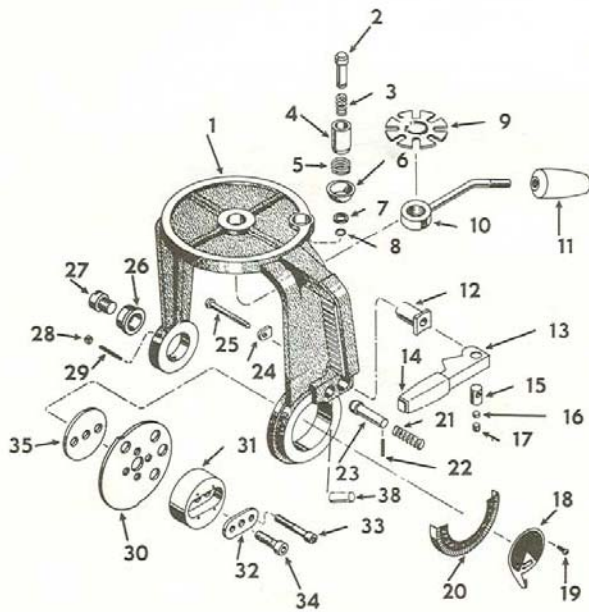
Identification	Description	Quantity	Part No.	Identification	Description	Quantity	Part No.
1	Guard (Includes 4, 11 & 12)	1	203272-03	10	Saw Blade (10" Combination Chisel Tooth)	1	R1041
2	Wing Nut	1	70474	11	Name Plate	1	96934
3	Dust Spout	1	80466	12	Guard Clip	1	201404
4	Caution Plate	1	80126	13	Lower Guard	2	96622
5	Kickback Assembly	1	70477-02	14	Guard Retainers	4	96621
6	Cap (Not used on some units)	1	80534	15	10-24 x $\frac{3}{8}$ RH Self-Tap Screw	3	84638
7	Kickback Clamp	1	80085-01	16	10-24 x $\frac{3}{8}$ Thumb Screw	1	96692
8	Shim Washer	1	80457	17	Wrench	1	80137-01
9	Hex Jam Nut (5/16-18)	1	80467	18	Allen Wrench (5/16 Hex)	1	80138

Rollerhead Assembly



Identification	Description	Quantity	Part No.
1	Rollerhead	1	81331-02
2	Hex Hd. Cap Screw ($\frac{3}{8}$ -16 x 1")	2	82102
3	Bearing	4	81004
4	Bearing Shaft (Eccentric)	2	80461
5	Drive Screw (#6 x $\frac{3}{8}$)	1	82229
6	Bumper	1	80525
7	King Bolt	1	70475
8	Pointer (Out-Rip) (In-Rip)	1	83822-02
10	Pan Hd. Taptite Screw (#6 x $\frac{1}{4}$ ")	2	80488
11	Rip Lock Knob	1	81368
12	Rip Lock Slug	1	81333
13	Rip Lock	1	81332
14	Hex Nut ($\frac{1}{2}$ -24)	2	80470
15	Lock Washer ($\frac{1}{2}$)	2	84319

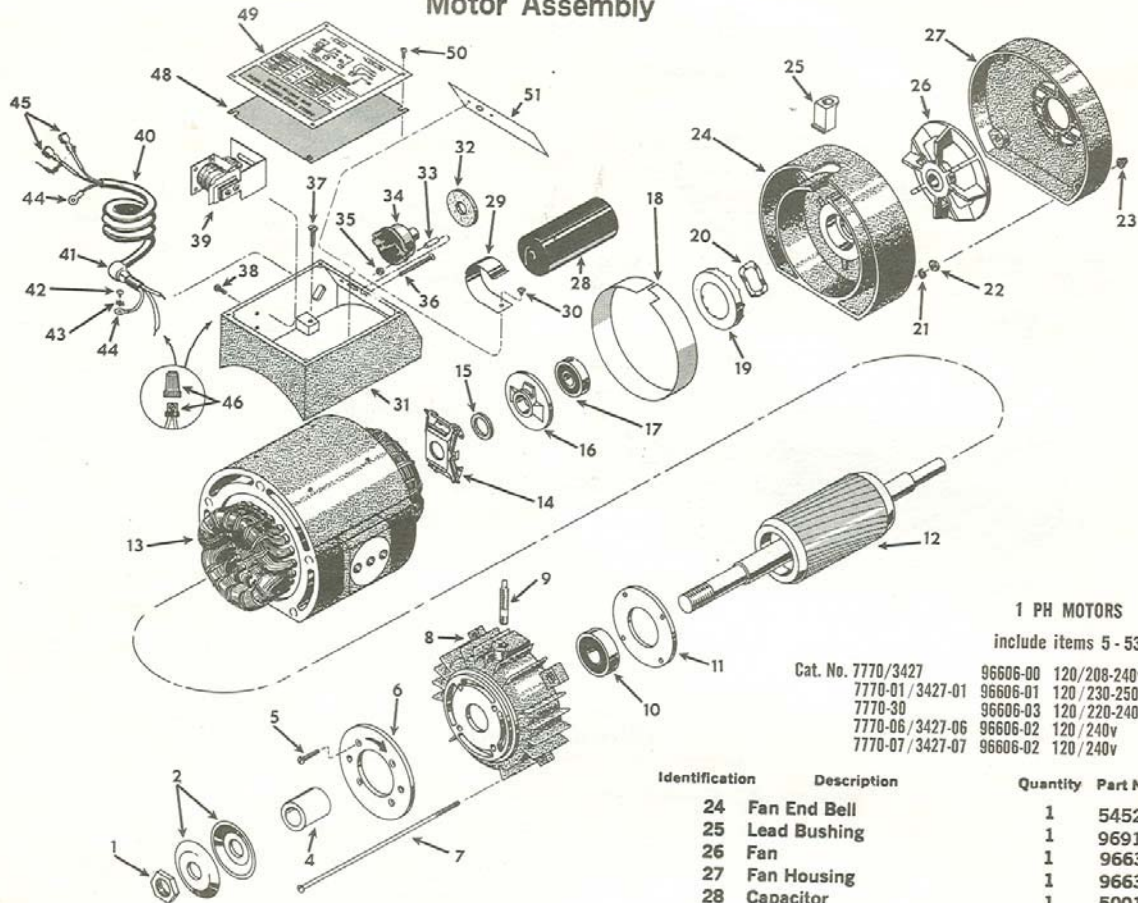
Yoke Assembly



Identification	Description	Quantity	Part No.
9	Adjuster	1	80464
10	Yoke Clamp	1	203751
11	Handle Grip	1	80066
12	Bevel Clamp Bushing	1	71727
13	Bevel Clamp Handle	1	81345
14	Handle Grip	1	81366-01
15	Pivot Pin	1	81357
16	Set Screw Slug	1	103522
17	Hol. Hd. Cup Pt. Set Screw ($\frac{1}{4}$ -20 x $1\frac{1}{4}$ ")	1	82387
18	Medallion Pointer	1	96947
19	Pan Hd. Taptite Screw (8 x $\frac{1}{4}$ ") (Phillips)	2	80487
20	Bevel Scale	1	81356
21	Bevel Latch Spring	1	80828
22	Roll Pin ($\frac{1}{2}$ x $\frac{5}{8}$ ")	1	38454
23	Release Pin	1	81323
24	Washer	1	81358
25	Bevel Clamp Screw	1	81208
26	Trunnion Bushing	1	70476
27	Support Screw	1	203111
28	Hex Nut (#10-24)	3	81953
29	Soc. Cup Pt. Set Screw (10-24 x 1")	3	80652
30	Dial Plate	1	81344
31	Dial Plate Hub	1	81361
32	Hub Washer	1	80969
33	Soc. Hd. Cap Screw ($\frac{1}{2}$ -18 x $1\frac{1}{4}$ ")	2	82172
34	Spec. Screw	1	81014
35	Spacer	1	81346
38	Bushing	1	81354

Identification	Description	Quantity	Part No.
1	Yoke (Includes 4, 38)	1	81378-04
2	Index Pin	1	81341
3	Latch Spring	1	81324
4	Locating Bushing	1	81340
5	Cup Spring	1	81342
6	Index Cam Cup	1	81339
7	Washer	1	81337
8	Snap Ring	1	39645

Motor Assembly



1 PH MOTORS

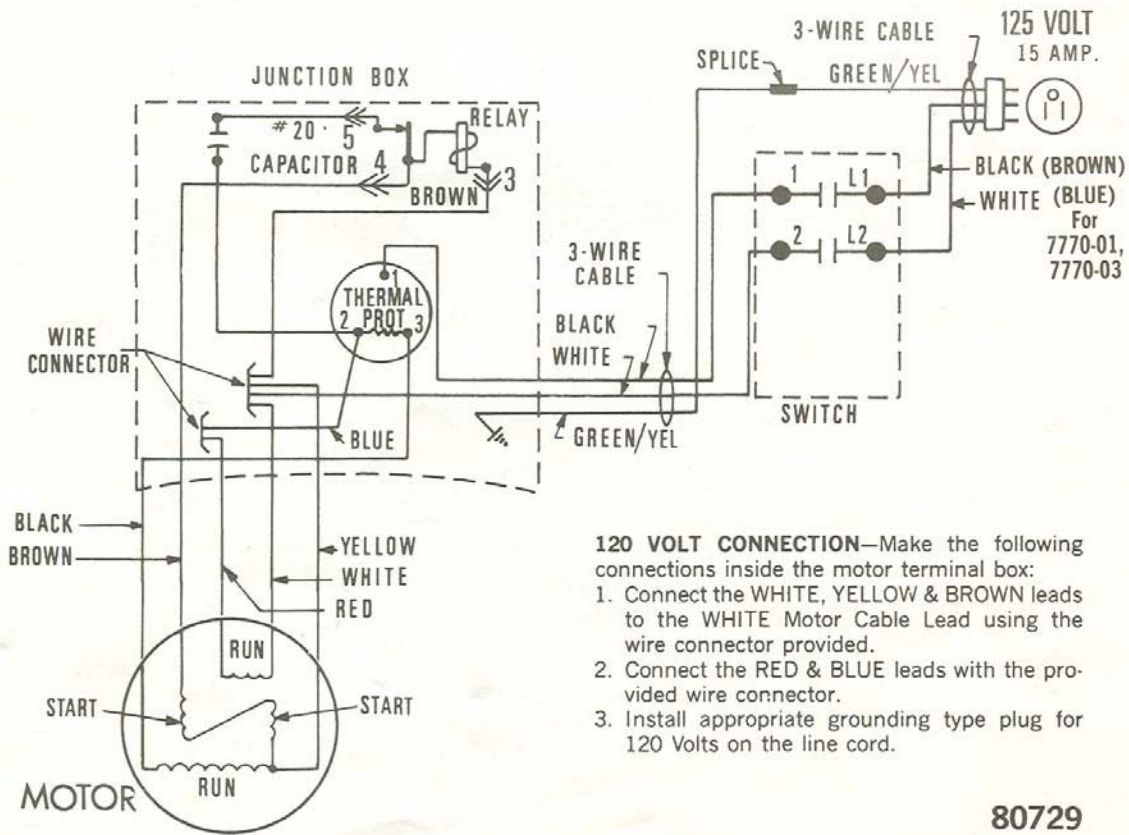
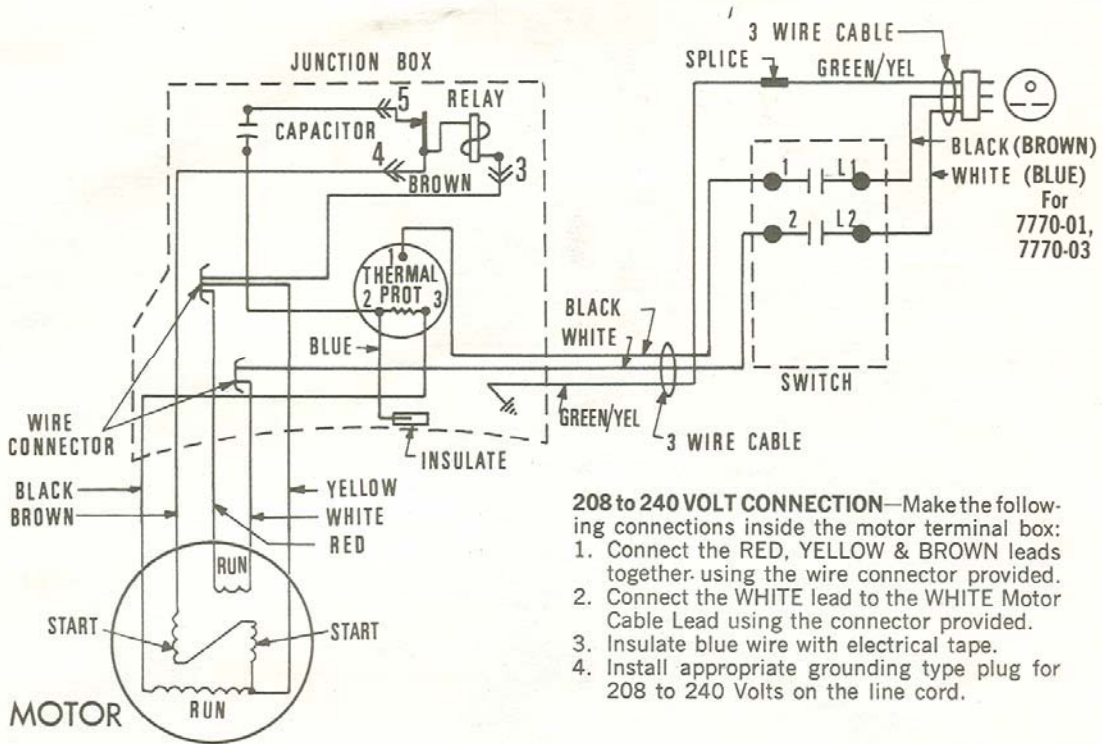
include items 5-53

Cat. No.	7770/3427	96606-00	120/208-240v	60 cy.
7770-01/3427-01	96606-01	120/230-250v	50 cy.	
7770-30	96606-03	120/220-240v	50 cy.	
7770-06/3427-06	96606-02	120/240v	50/60 cy.	
7770-07/3427-07	96606-02	120/240v	50/60 cy.	

Identification	Description	Quantity	Part No.
1	Arbor Nut	1	80109
2	Arbor Collar	2	80465
4	Arbor Spacer	1	80105-01
5	Pan Hd. Screw (8-32 x 1 1/8")	4	99276-18
6	Cover Plate	1	86523
7	Tie Rod	4	545511
8	Arbor-End Bell	1	545404
9	Guard Stud	1	539007
10	Ball Bearing	1	80510
11	Bearing Cover	1	545405
12	Rotor	1	80702
13	Stator (120/208-240 volt, 60 cy. 1 PH)	1	80696-59
	Stator (120/230-250, 50 cy. 1 PH)	1	80696-45
	Stator (120/220-240, 50 cy. 1 PH)	1	80696-49
	Stator (120/240, 50/60 cy. 1 PH)	1	80696-66
14	Brake Mechanism	1	545407
15	Felt Washer	1	500314
16	Brake Sleeve & Facing	1	545414
17	Ball Bearing	1	81472
18	Fan Bell Insulation	1	500171
19	Brake Clip	1	203356
20	Load Spring	1	82495
21	Lock Washer (#8)	4	82506
22	Hex Nut (#8-32)	4	81967
23	Hex Cap Nut (#8-32 x 3/8")	4	81934

Identification	Description	Quantity	Part No.
24	Fan End Bell	1	545281
25	Lead Bushing	1	96919
26	Fan	1	96630
27	Fan Housing	1	96631
28	Capacitor	1	500141
29	Capacitor Clamp	1	500139
30	Pan Hd. Self Tap Screw (8-32 x 3/8")	1	80598
31	Relay Box	1	96609
32	Felt Washer	1	545012
33	Standoff Bushing	2	545274
34	Overload Protector	1	545277
35	Hex Nut (#8-32)	2	81967
36	Flat Hd. Screw (8-32 x 1 1/8")	2	82321
37	Flat Hd. Screw (8-32 x 5/8")	4	80595
38	Pan Hd. Screw (6-32 x 1/4")	2	84638
39	Relay Mounting Bracket	1	500131
	6-32 x 1/4 Phil Hd Screw	2	99289-04
40	Motor Cable (Includes 44 and 45)	1	70649-02
41	Cord Bushing	1	48822
42	Pan Hd. Self Tap Screw (8-32 x 3/8")	1	80598
43	Everlock Washer (#8)	1	33985
44	Lead Terminals	2	34289
45	Spade Connectors	2	81771
46	Wire Connector	2	32114-01
48	Gasket	1	545273
49	Specification Plate	1	85000
50	Truss Hd. Self Tap Screw (#4 x 3/8")	4	71029
51	Decal	1	96940
Parts Not Shown			
	Sleeve. Use on blue lead Connection Diagram	1	545588
			80729

Motor Control Connection Diagrams (Single Phase)



80729

FACTORY SALES AND SERVICE CENTERS

Area	Telephone No.	Area	Telephone Code No.
ALABAMA: Birmingham 35009, 10 Green Springs Highway	205 842-2638	NEBRASKA: Omaha 68102, 2218 N.avenworth Street	402 345-2330
ARIZONA: Phoenix 85004, 537 E. McDowell Rd.	602 256-1338	NEW JERSEY: Paterson (Little Falls) 07624, Rt. 66 East	201 256-9273
ARKANSAS: Little Rock, 72201, 519 West Seventh Street	501 372-3040	Union 07083, 2308 U. S. Highway 22 West	201 964-7040
CALIFORNIA: Anaheim 92702, 1235 So. Lucido Ave.	714 772-4060	(1 Block West of Flags)	
Fresno 93703, 2518 North Blackstone Avenue	209 224-2152	NEW MEXICO: Albuquerque 87107, 2812 Candelaria Road N.E.	505 345-2503
Los Angeles 90007, 2432 S. Broadway	213 749-0371	Butte 14209, 881 W. Delaware Ave.	518 785-1867
Oakland (East Leavenworth) 94678, 1500 E. 14th Street	415 276-1610	Great Neck 11021, 98 Cattermill Rd. (Sales only)	516 884-6220
Orange 92666, 822 Town and Country Road (Sales only)	714 547-7687	Consumer Products Division	516 829-9504
Riverside 92506, 4010 Merrill Ave.	714 787-9700	Professional Division	516 829-9506
Sacramento 95814, 1512 Seveneenth Street	916 444-3188	Automotive Division	516 792-2700
San Diego 92105, 3811 El Cajon Blvd.	619 280-3221	New York 10462, 1894 E. Tremont Avenue (Bronx)	212 299-6500
Santa Clara 95050, 2991 The Alameda	408 241-9162	New York 10014, 237 Varco St. (Manhattan)	212 959-6450
S. San Francisco 94000, P.O. Box 231, 1139 Airport Blvd.	415 871-7278	New York 11277, 54-15 Queens Blvd. (Woodside)	212 335-1042
Van Nuys 91411, 14920 Victory Blvd.	213 787-5531	Rochester 14623, 2969 West Henrietta Road	716 461-2580
COLORADO: Denver 80219, 1171 South Federal Boulevard	303 923-8325	Syracuse 13224, 2140 Erie Blvd. E.	315 446-5086
CONNECTICUT: Bridgeport 06603, 1055 Lafayette Circle	203 368-3419	Westbury 11590, 1059 Old Country Rd. (L.I.)	516 997-6140
Hartford 06114, 131 Meadow Street	203 249-6241	NORTH CAROLINA: Charlotte 28205, 3007 E. Independence Blvd.	704 374-1779
DISTRICT OF COLUMBIA: Washington		Greensboro 27403, 1010 W. Lee Street	919 275-0906
Bladensburg, Maryland 20710, 4501 Baltimore Ave.	301 779-3808	Raleigh 27604, 2423 Atlantic Avenue	919 834-8207
Falls Church, Virginia 22046, 129 Annandale Road	703 533-1147	OHIO: Cincinnati 45241, 2310 E. Sharon Rd.	513 773-1111
Rockville, Maryland 20852, 1020 Rockville Pike	301 340-7377	Cleveland 44113, 2901 Detroit Ave.	216 651-4243
FLORIDA: Jacksonville 32206, 5224 Pearl Street	904 356-2991	Columbus 43227, 3978 E. Livingston Ave.	614 237-0461
Miami 33158, 13345 N. W. Seventh Avenue	305 661-6556	Dayton 45405, 2898 South Dixie Drive	513 298-1921
Orlando 32806, 840 S. Orange Ave.	305 423-1651	Toledo 43607, 3231 Dorr St.	419 531-8921
Tampa 33609, 3401 W. Kennedy Blvd.	813 872-8317	OKLAHOMA: Oklahoma City 73106, 1318 Linwood Blvd.	405 232-7515
GEORGIA: Atlanta 30313, 316 Techwood Drive, N.W.	404 524-0431	Tulsa 74145, 2120 South Sheridan Road	918 622-5656
Atlanta 30324, 3271 Hamilton Blvd., S.W. (Sales only)	404 374-1300	ORIGON: Portland 97209, 1640 N.W. Johnson Street	503 238-6631
ALIFANTA: Honolulu 96813, 675 Aiea Street	808 536-9374	PENNSYLVANIA: Allentown (Whitehall) 18052	
ILLINOIS: Chicago 60611, Addison, 1710 W. Armitage Court	312 423-7112	Harrisburg 17110, 6070 Allentown Blvd.	717 545-0661
Chicago 60646, Lincolnwood, 6710 N. Crawford Ave.	312 673-0923	Lancaster 17604, 7100 Lancaster Ave.	717 393-5751
Chicago 60643, Oak Lawn, 1125 W. 166th Street	312 423-7112	Philadelphia 19103, 322 No. 20th Street (Service only)	215 564-5320
Des Plaines 60018, 2180 S. Wolf Rd. (Sales only)	312 827-0083	Pittsburgh 15222, 2437 Baum Blvd.	412 363-2700
Rock Island 61201, 725 30th Street	309 788-1744	Wayne 19087, 125 Stratford Avenue	610 488-2857
INDIANA: Evansville 47710, 307 First Ave., Crescent Center	317 426-4269	RHODE ISLAND: E. Providence 02914, 277 Pawtucket Ave.	401 434-1665
Hammood 46223, 7103 Kennedy Ave.	219 845-5100	SOUTH CAROLINA: Greenville 29601, 407 Pendleton St.	803 233-3038
Indianapolis 46202, 1125 W. 16th Street	317 359-5569	TENNESSEE: Knoxville 37917, 4110 North Broadway	615 688-0921
IOWA: Des Moines 50312, 2811 Ingersoll Street	515 244-7257	Memphis 38116, 988 East Brooks Rd.	901 352-3444
KANSAS: Wichita 67214, 203 N. Mathewson Street	316 263-6871	Nashville 37203, 601 Eighth Ave. S.	615 254-1061
KENTUCKY: Louisville 40205, 4407 Park Blvd.	502 366-1495	TEXAS: Amarillo 79106, 3000 West 6th Ave.	806 373-1531
LOUISIANA: Metairie (New Orleans) 70002		Dallas 75207, 1308 N. Industrial Blvd. (Service only)	214 741-6601
3310 N. Causeway Blvd.	504 837-2590	Dallas 75247, 7701 Stemmons Freeway (Sales only)	214 630-6021
MARYLAND: Baltimore 21211, 201 West 28th Street	301 467-7411	El Paso 79925, 1020 Magnolia Street	915 778-9789
Baltimore 21205, 4712 Erdman Ave.	301 485-5550	Fort Worth 76103, 1801 Bonar Street	817 336-0178
Bladensburg (Wash. D.C.) 20710, 4501 Baltimore Ave.	301 779-3808	Houston 77022, 536 E. Tidwell Rd.	713 692-7111
Rock Island 20852, 1020 Rockville Pike	301 340-7377	San Antonio 78201, 500 Cuba Avenue	512 732-1321
MASSACHUSETTS: Boston (Brighton) 02135, 12 Market St.	301 828-2910	UTAH: Salt Lake City 84115, 1541 S. Third Street	801 486-5828
Roxton (Bath) 21204, 701 East Joppa Rd.	617 782-6545	VIRGINIA: Falls Church 22046, 129 Annandale Road	703 533-1147
MICHIGAN: Detroit 48219, 18133 W. McNichols Rd.	313 754-6880	Norfolk 23513, 7631 Sewells Place Blvd.	804 649-9345
Detroit 48224, 11360 East Seven Mile Rd.	313 527-5010	Richmond 23222, 1424 Chamberlayne Ave.	804 649-9345
Trent 48604, G-4083 Clove Road	313 789-6151	WASHINGTON: Seattle 98109, 701 Third Ave., N.	206 282-6432
Grand Rapids 49509, 3662 Clyde Park Ave., S.W.	616 534-7708	Spokane 99201, 3540 North Market Street	509 343-0289
Southfield 48076, 21413 Civic Center Drive (Sales only)	313 353-3490	WEST VIRGINIA: Charleston 25312, 1638 Sixth Ave.	404 343-0289
MINNESOTA: Bloomington (Minneapolis) P.O. 55420		WISCONSIN: Milwaukee (West Allis) 53227, 10903 W. Lincoln Ave.	414 543-9990
7912 Garfield Ave.	612 884-9191		
MISSOURI: Kansas City 64111, 4334 Main St.	816 431-0629		
Kansas City 64111, 4304 Main St. (Sales only)	816 331-0633		
St. Ann 63074, 10933 St. Charles Rock Road	314 739-4661		
St. Ann 63074, 10933 St. Charles Rock Road (Sales only)	314 291-2772		
St. Louis 63110, 615 S. Vandeventer Ave. (Service only)	314 533-2210		
St. Louis 63110, 615 S. Vandeventer Ave. (Sales only)	314 291-2772		

BLACK & DECKER MFG. CO., Limited, Canada

BROOKVILLE, ONTARIO	Perth Street	7865 St. Lawrence Blvd.
CALGARY, ALBERTA	1002 11th Avenue S.W.	OTTAWA, ONTARIO
CON MILLS (Toronto)	2 Valleybrook Drive	QUERBEK CITY, P.Q.
EMKINTON	11440 Ave. - 142 Street	REGINA, SASKATCHEWAN
HALLIFAX, NOVA SCOTIA	800 McLean Street	SASKATOON, SASK.
HAMILTON, ONTARIO	180 Parkdale Ave. N.	VANCOUVER, B.C.
LONDON, ONTARIO	631 Commissioners Rd. East	WINNIPEG, MANITOBA

AUTHORIZED SERVICE STATIONS

ALABAMA: Andalusia, Taylor Parts & Supply Co.	ILINDIST (Continued)	NEW YORK: Bay Shore, Thorne Appliance Service of Suffolk, Inc.
Carlisle, Nadea Products Inc.	Ill. 1 & 2 Electric Service, Inc.	NORTH CAROLINA: Asheville, Hayes & Landford Electric Co.
Huntsville, 1901, Inc.	IPRHS, Couch & Hays	Elizabeth City, Miles Jennings, Inc.
Mobile, Topy Power Tool Inc.	Jackman, Mackintosh Motor Co.	North Carolina, Fargy, Acme Welding Supply Co.
Montgomery, Mid State Electric Motor Service	Springfield, James Machinery	Grand Forks, Acme Electric Motor Company
Opelika, Alabama Electric Motor Service	INDIANA: Elletts, Dumas Electric Tool Repair	OHIO: Akron, Automotive Supply & Equip. Co.
Tuscaloosa, Electric Motor & Supply Co.	Ft. Wayne, Power Tool & Service	Clinton, Hays
ALASKA: Anchorage, Apex Service Company	IBM, Atomic Market Steel Erectors, Inc.	Cleveland, Electrical Tool Service, Inc.
Fairbanks, Arm Service Company	Cedar Rapids, Janda Electric	Columbus, Kingston Electric Motor
ARIZONA: Tucson, Electric Motor Company	Dayton, Industrial Engineering Equipment Co.	Dayton, Mohr Motor Power Tools, Inc.
ARKANSAS: Ft. Smith, H. Prock Tool & Equipment	KENTUCKY: Bowling Green, General Electric Service	Dayton, Dayton Electric Motor & Tool Co.
Jacksonboro, Arkansas Industrial Electric Supply Co., Inc.	Lexington, Lexington Industrial Service Co., Inc.	Dayton, Richmond Industrial & Tool Supply
Rooseville, F.A.N. Electric	Owensboro, Owensboro Armature Repair, Inc.	PENNSYLVANIA: Erie, Perry Mill Supply Co.
CALIFORNIA: Escondido, Electric Tool Service	LOUISIANA: Baton Rouge, Bates Rouge Electric Motor Service	Lehigh, Stewart Equipment Company
Imperial, Imperial Tool Co.	Baton Rouge, Harvey Specialty & Supply	Mechanicsburg, Power Tool Service
Modesto, Standard Electric	Bay City, Hays Specialty & Supply	Reading, Reading Electric Motor Service, Inc.
Redding, Electric Tool & Motor Repair	Shreveport, Carl Part Electric Motor Service, Inc.	Roslyn, Tompkins Electric
Redlands, Diercks Armature Works	MINE: Beaver, N. Berg & Son	Wiles, Sarns, Schwab Electric
Westland Hills, Specialty Appliance Service	Westbrook, Small Electric Works	SOUTH CAROLINA: Charleston, Charleston Supply Company
COLORADO: Ft. Collins, Golden Hardware Co.	MISSISSAUGA, S. & J. Welding	Charleston, Delta Industrial Electric Company, Inc.
CONNECTICUT: New Haven, New Haven Electric Machine Co.	Gulfport, Wizard Service Center	Columbia, Mann Electric Repair Company, Inc.
FLORIDA: Bradenton, Peter W. Elliott & Associates Repair	11440 Ave. - 142 Street	Columbia, Mann Electric Repair Company, Inc.
Ft. Lauderdale, State Service, Inc.	MINNESOTA: Dodge Center	SOUTH DAKOTA: Rapid City, Industrial Electric & Supply Co.
Ft. Myers, ABC Small Appliance Repair Center	Duluth, Condemner Carton Equipment	Sass, Fink, Trow-Houston Equipment Company
Mechanic, Day Equipment Service	MISSISSAUGA: Calumet, Electric Motor Sales & Service	TENNESSEE: Chattanooga, Dixie Industrial Service, Inc.
Medianna, Del's Hardware	Greenfield, J. S. & J. Welding	Rockton, Top Service Tools
Miami, H. H. Incorporated	Gulfport, Wizard Service Center	TEXAS: Austin, Hamilton Electric Works
Meriden, Electric Motor Service, Incorporated	Jackson, Transient Electric	Brownsville, Imperial Electric Motor Service
Palatka, Van Bruet & Von, Inc.	MISSOURI: Springfield, Electric Motor Service & Supply	Corpus Christi, Smith-Sheehan Electric Works
GEORGIA: Augusta, Augusta Mill & Supply Co.	Springfield, Electric Motor & Supply	Harrison, Lewis Electric Motors, Inc.
Columbus, Smith Group Electric Co., Inc.	MONTANA: Billings, Top's Electric Service	Liberty, Anderson Heavy Electric
Macon, C.W. Farmer Co.	Great Falls, Wash Electric Motors, Inc.	Ozama, Electric Service & Supply Company
Savannah, Georgia Supply Company	Yonkers, Travers State Electric	San Angelo, Western Electric Motor Company
Waynesboro, White Hardware	MASSACHUSETTS: Lowell, Lowville Tool Center	Wichita Falls, Westbrook, Inc.
HAWAII: Hilo, Hawaii Planning Mill	North Platte, Anapco Electric	VERMONT: Burlington, Burlington Best All
Kahala, Maui Power Tool Service	NEW JERSEY: Vin, Vign, Tool Services, Inc.	VIRGINIA: Hampton, The G.C. Wilkins Company Ltd.
KAZAH: Astoria, Appliance & Electric Services, Inc.	NEW JERSEY: Newark, Able Portable Electric Tool Co.	Roanoke, Lloyd Electric Company
IDAHO: Boise, Boise Ignition Company	Trenton, Lichtenow's Electric Motor Service	WASHINGTON: Kennewick, Power Tool Service
Idaho Falls, Christensen Electric Motors	Trenton, DeWitt Enterprises, Inc.	Tacoma, Apex Electric Company, Inc.
Levittown, Wade's Saw & Tool Service	NEW MEXICO: El Paso, Crown Electric Company	Tacoma, Apex Electric Company, Inc.
ILLINOIS: Acosta, S & R Rigging Corporation	Farmington, Noel's Inc.	Madison, Richard E. Eiss Company
Bloomington, Electric Motor Repair Company		WYOMING: Casper, Casper Tool Co.
Bradley Arthur Motor Works		Reliance, Don's Pipeline Service
Electric Motor Industry Supply Co.		
Elkington, Heister Sales & Service		



IMPORTANT!

To assure product **RELIABILITY**, repairs, maintenance and adjustment, should be performed by Black & Decker Service Centers or other qualified service organizations, always using Black & Decker replacement parts.

IMPORTANT!

HOME & COMMERCIAL USE WARRANTY
(A LIMITED WARRANTY)

Black & Decker warrants this product for one year from date of purchase. We will repair without charge, any defects due to faulty material or workmanship. Please return the complete unit, transportation prepaid to any Black & Decker Service Center or Authorized DeWalt Service Station listed in your owner's manual. This warranty does not apply to accessories. This warranty gives you specific legal rights and you may have other rights which vary from state to state. Should you have any questions, contact your nearest Black & Decker Service Center Manager.

DeWalt Division
THE BLACK & DECKER MFG. CO.—LANCASTER, PA. 17604, U.S.A.