

REPAIR PARTS CATALOG

**“GRAND RAPIDS”
GRINDERS**



Manufactured by
GALLMEYER & LIVINGSTON CO.
GRAND RAPIDS, MICHIGAN

GALLMEYER & LIVINGSTON CO.

Grand Rapids, Mich.

ORDERING INSTRUCTIONS

The Gallmeyer & Livingston Co. has a record of all parts used in your machine and usually can supply them on short notice. On the following pages are shown parts assembly drawings to assist in ordering replacement parts.

In order that prompt service may be rendered, the following information must be supplied with orders for repair parts.

1. Quantity of pieces required.
2. Name and Number of parts as listed.
3. Number of assembly drawing.
4. Model of machine.
5. Serial Number of machine.

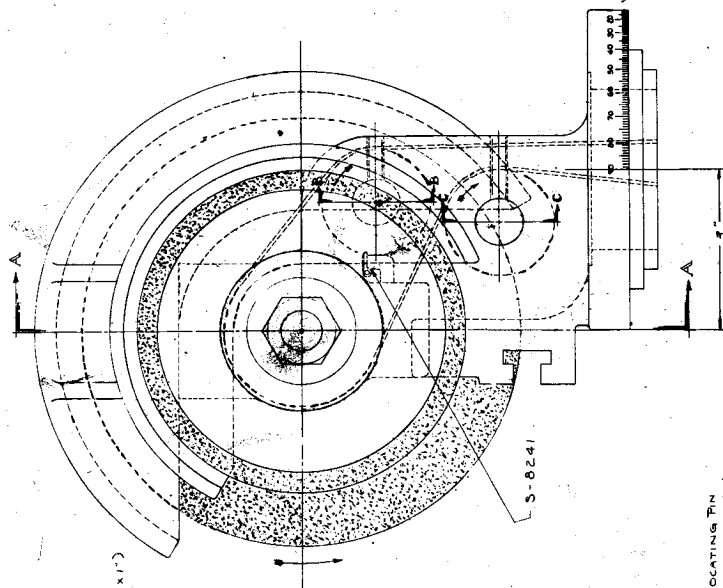
The Model and Serial Number is to be found on the name plate on the base of the machine.

Example of how to order a part:

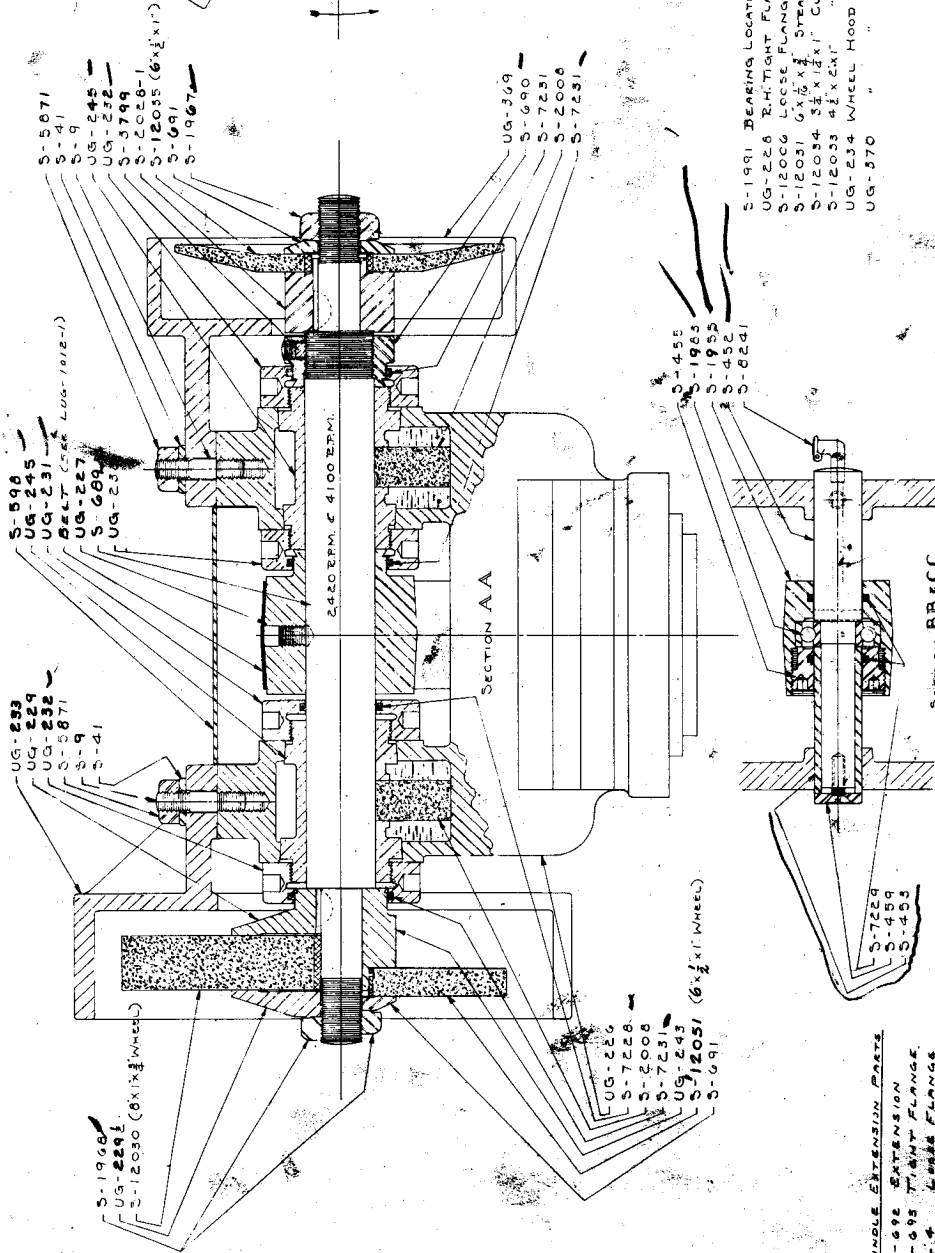
One (1) Feed Screw, S-1669-1,
Drawing No. LSG-301.
For No. 55 Surface Grinder,
Serial No. S-55310.

Occasionally it may be necessary, when one part is ordered, to include one or more additional parts made necessary by replacement of first part.

If you cannot find the required part in this book, give it's description, location and function. Always give the Model and Serial Number of the machine and the Quantity of pieces required.



GALLMEYER & LIVINGSTON, CO.
 GRAND RAPIDS, MICH., U.S.A.
 No. 5 UNIVERSAL GRINDER
 BEONEE BEARING SPINDLE SECTION



- S-1991 BEARING LOCATING PIN
- UG-226 RIGHT FLANGE (4')
- S-12036 LEFT FLANGE (2')
- S-12031 6 1/2 x 1 1/2 STEADY WHEEL
- S-12034 3 1/2 x 1 1/2 CUP
- S-12033 4 1/2 x 2 1/2 CUP
- UG-234 WHEEL HOOD (RH. 8')
- UG-370 (L.H. 6')

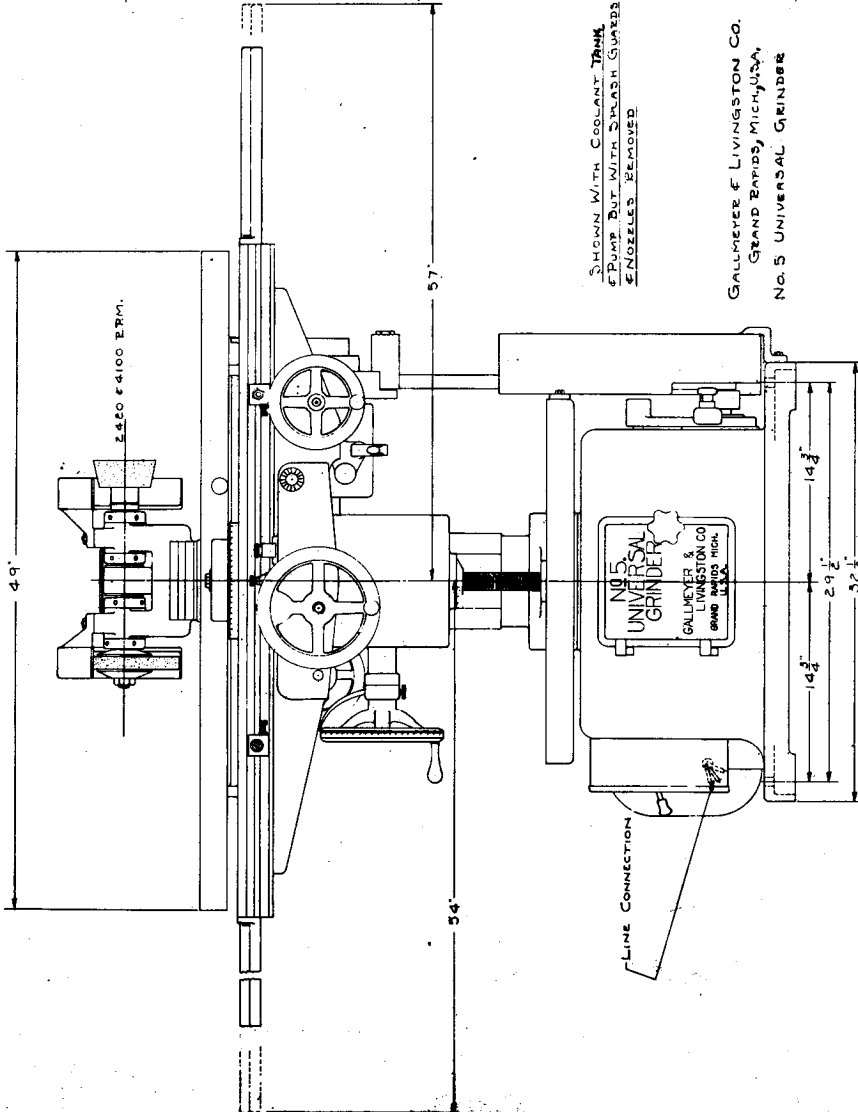
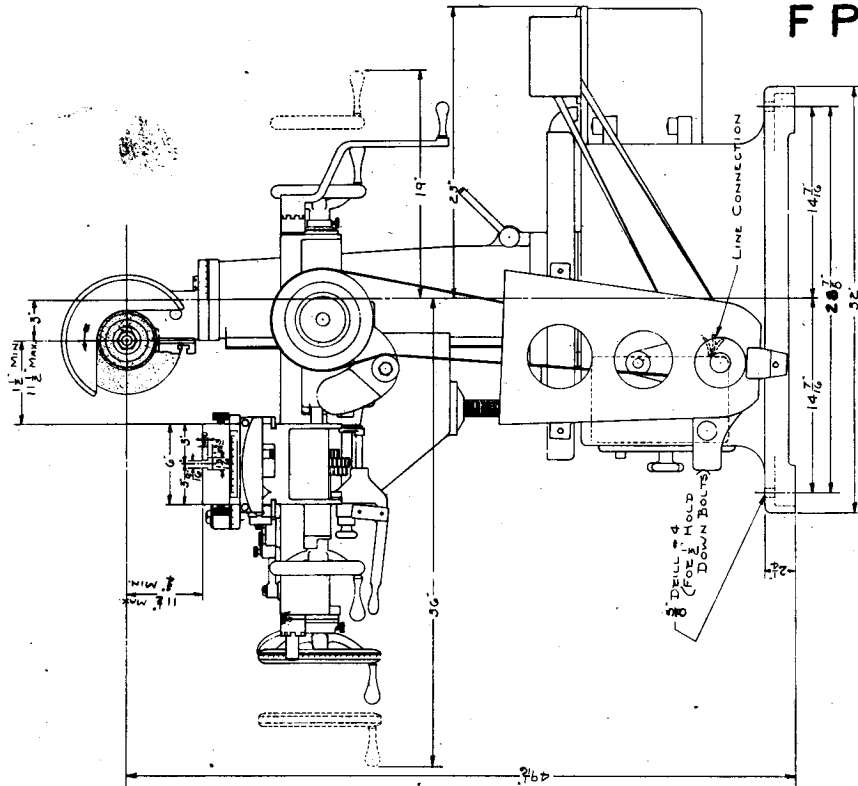
- SPINDLE EXTENSION PARTS
- S-592 EXTENSION
 - S-695 RIGHT FLANGE
 - S-44 LARGE FLANGE
 - S-1969 NUT

Tool Room

5 takes

a 1/2 " felt

3/24/73



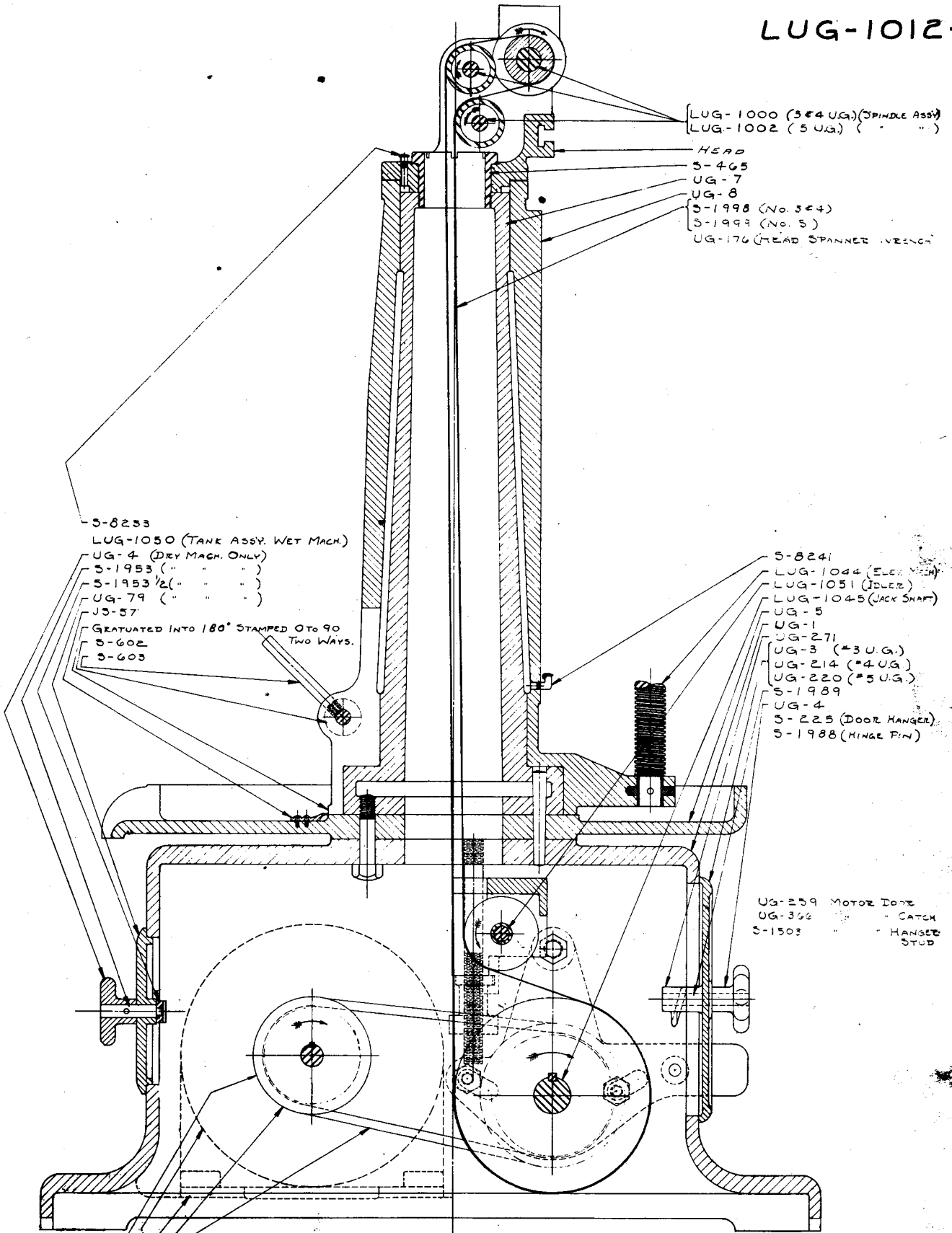
SHOWN WITH COOLANT TRINK
PUMP BUT WITH SPLASH GUARDS
ENGAGED. REMOVED

GALLMEYER & LIVINGSTON CO.
GRAND RAPIDS, MICH., U.S.A.
NO. 5 UNIVERSAL GRINDER

NO. 5 UNIVERSAL GRINDER
SPINDLE HEAD ASSEMBLY (BRONZE BEARING)

<u>PART NO.</u>	<u>PART NAME</u>	<u>QUANTITY</u>
UG-226	Head	1
UG-227	Pulley	1
UG-228	Tight Flange (R.H.) (4")	1
UG-229	Tight Flange (L.H.) (4")	1
UG-229 $\frac{1}{2}$	Loose Flange (4")	1
UG-231	Adjusting Nut	1
UG-232	Adjusting Nut	3
UG-233	Wheel Hood (L.H.) (8")	1
UG-234	Wheel Hood (R.H.) (8")	1
UG-243	Tight Flange (L.H.) (2")	1
UG-245	Bronze Bearings	2
UG-369	Wheel Hood (R.H.) (6")	1
UG-370	Wheel Hood (L.H.) (6")	1
S-4	Spindle Extension Loose Flange	1
S-9	Hood Stud	2
S-41	Hood Stud Washer	2
S-452	Idler Shaft	2
S-453	Idler Shaft Bushing	2
S-455	Idler Nuts	2
S-459	Idler Shaft Washer	2
S-598	Belt Guard	1
S-689	Spindle	1
S-690	Thrust Nut	1
S-691	Loose Flange (2")	2
S-692	Spindle Extension	1
S-693	Spindle Extension Tight Flange	1
S-1955	Idler Pulley	2
S-1967	Spindle Nut (R.H.)	1
S-1968	Spindle Nut (L.H.)	1
S-1969	Spindle Extension Nut	1
S-1983	Ball Bearing	2
S-1991	Bearing Locating Pin	2
S-2008	Oil Wick	2
S-2028-1	Tight Flange (R.H.) (2")	1
S-3799	Thrust Nut Plug	1
S-5871	Hood Stud Nut	2
S-7228	Felt Ring	1
S-7229	Felt Ring	4
S-7231	Felt Ring	3
S-8241	Elbow Oiler	4
S-12006	Loose Flange (1 7/16")	1
S-12030	Straight Wheel (8"x1"x3/4")	1
S-12031	Straight Wheel (6"x1/16"x3/4")	1
S-12033	Flaring Cup Wheel (4 $\frac{1}{2}$ "x2"x1")	1
S-12034	Flaring Cup Wheel (3 $\frac{1}{4}$ "x1 $\frac{1}{4}$ "x1")	1
S-12035	Dish Wheel (6"x $\frac{1}{2}$ "x1")	1
S-12051	Straight Wheel (6"x $\frac{1}{2}$ "x1")	1

LUG-1012-1



- (LUG-1000 (3 & 4 U.G.)(SPINDLE ASSY)
- (LUG-1002 (5 U.G.) (" ")
- HEAD
- S-465
- UG-7
- UG-8
- S-1998 (NO. 3 & 4)
- S-1999 (NO. 5)
- UG-176 (HEAD SPANNER WRENCH)

- S-8233
- LUG-1050 (TANK ASSY. WET MACH.)
- UG-4 (DRY MACH. ONLY)
- S-1953 (" ")
- S-1953 1/2 (" ")
- UG-79 (" ")
- JS-57
- GRATUATED INTO 180° STAMPED 0 TO 90 TWO WAYS.
- S-602
- S-603

- S-8241
- LUG-1044 (ELECT. MACH.)
- LUG-1051 (IDLER)
- LUG-1045 (JACK SHAF)
- UG-5
- UG-1
- UG-271
- UG-3 (#3 U.G.)
- UG-214 (#4 U.G.)
- UG-220 (#5 U.G.)
- S-1989
- UG-4
- S-225 (DOOR HANGER)
- S-1988 (HINGE PIN)

- UG-259 MOTOR DOOR
- UG-366 " CATCH
- S-1503 " HANGER STUD

- VEE BELTS
- UG-339 (60 CYCLE 1750 RPM)
 - UG-341 (25 & 50 CYCLE 1450 RPM)
 - S-2009
 - 1 1/2 H.P. 60 CYCLE 1750 RPM (NO. 3 & 4)
 - 1 1/2 H.P. 25 OR 50 CYCLE 1450 RPM (NO. 3 & 4)
 - 2 H.P. 60 CYCLE 1750 RPM (NO. 5)
 - 2 H.P. 25 OR 50 CYCLE 1450 RPM (NO. 5)

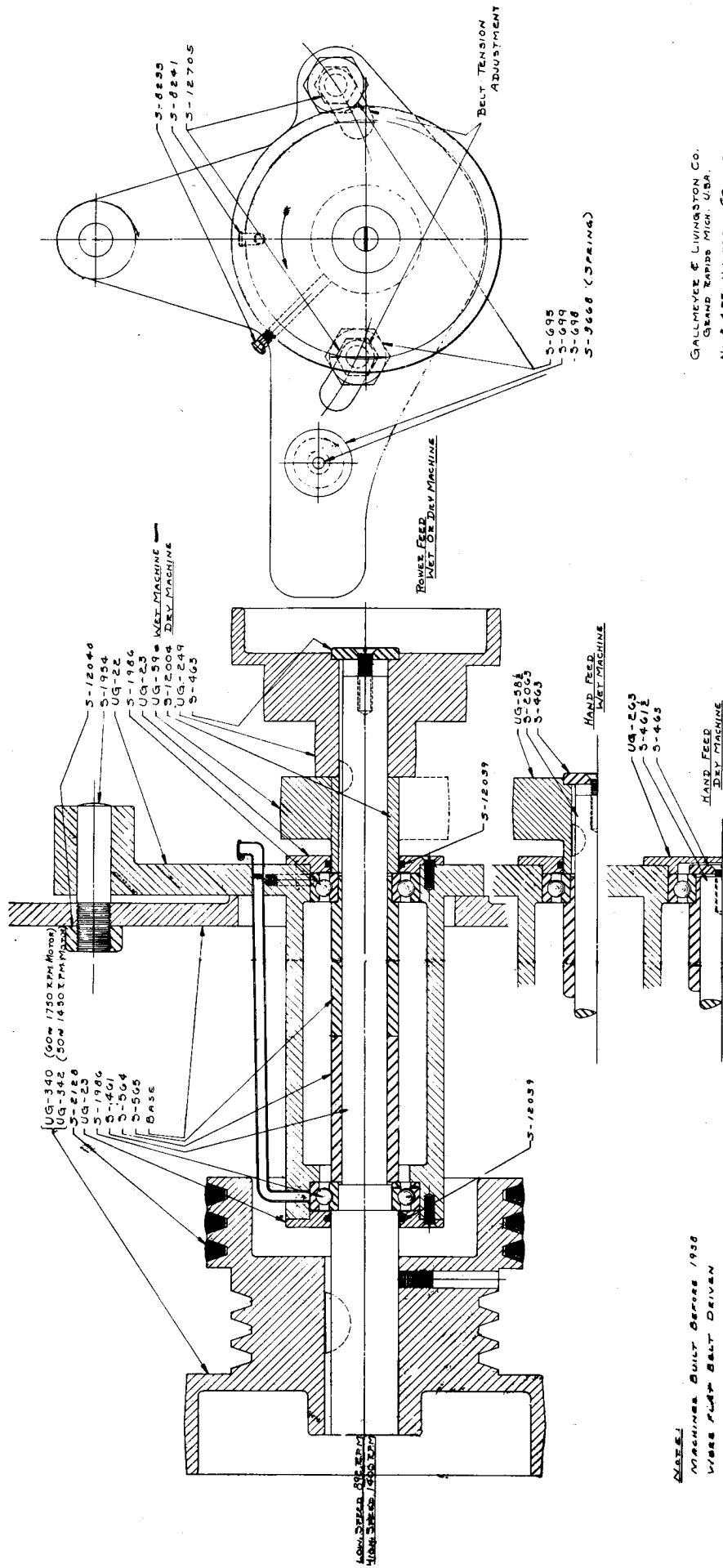
NOTE:
MACHINES BUILT BEFORE 1938
WERE FLAT BELT DRIVEN

GALLMEYER & LIVINGSTON CO.
GRAND RAPIDS MICH. U.S.A.
NO. 3-4&5 UNIVERSAL GRINDER
SPINDLE DRIVE & COLUMN SECTION

NO. 3-4-5 UNIVERSAL GRINDERS
 SPINDLE DRIVE & COLUMN SECTION

<u>PART NO.</u>	<u>PART NAME</u>	<u>QUANTITY</u>
UG-1	Base	1
UG-3	Base Door (No. 3)	1
UG-4	Knob	2
UG-5	Pan	1
UG-7	Inner Column	1
UG-8	Column Sleeve	1
UG-79	Rear Opening Cover	1
UG-176	Spanner Wrench	1
UG-214	Base Door (No. 4)	1
UG-220	Base Door (No. 5)	1
UG-259	Motor Door	1
UG-271	Base Door Catch	1
UG-339	Pulley (60 Cycle)	1
UG-341	Pulley (50 Cycle)	1
UG-366	Motor Door Catch	1
JS-57	Pointer	1
S-225	Hanger Stud	2
S-465	Head Lock Nut	1
S-602	Clamp Stud	1
S-603	Clamp Stud Handle	1
S-1503	Hanger Stud	2
S-1953	Cover Clamp Pin	1
S-1953 $\frac{1}{2}$	Cover Clamp Bar	1
S-1988	Hanger Stud Pin	4
S-1989	Knob Pin	1
S-1998	Belt (No. 3 & 4)	1
S-1999	Belt (No. 5)	1
S-2009	Motor Mounting Strip	1
S-8233	Straight Oiler	1
S-8241	Elbow Oiler	1

LUG-1045



GALLMEYER & LIVINGSTON CO.
 GRAND RAPIDS MICH. U.S.A.
 No. 3-445 UNIVERSAL GENDER
 JACK SHIRT ASSEMBLY SECTION

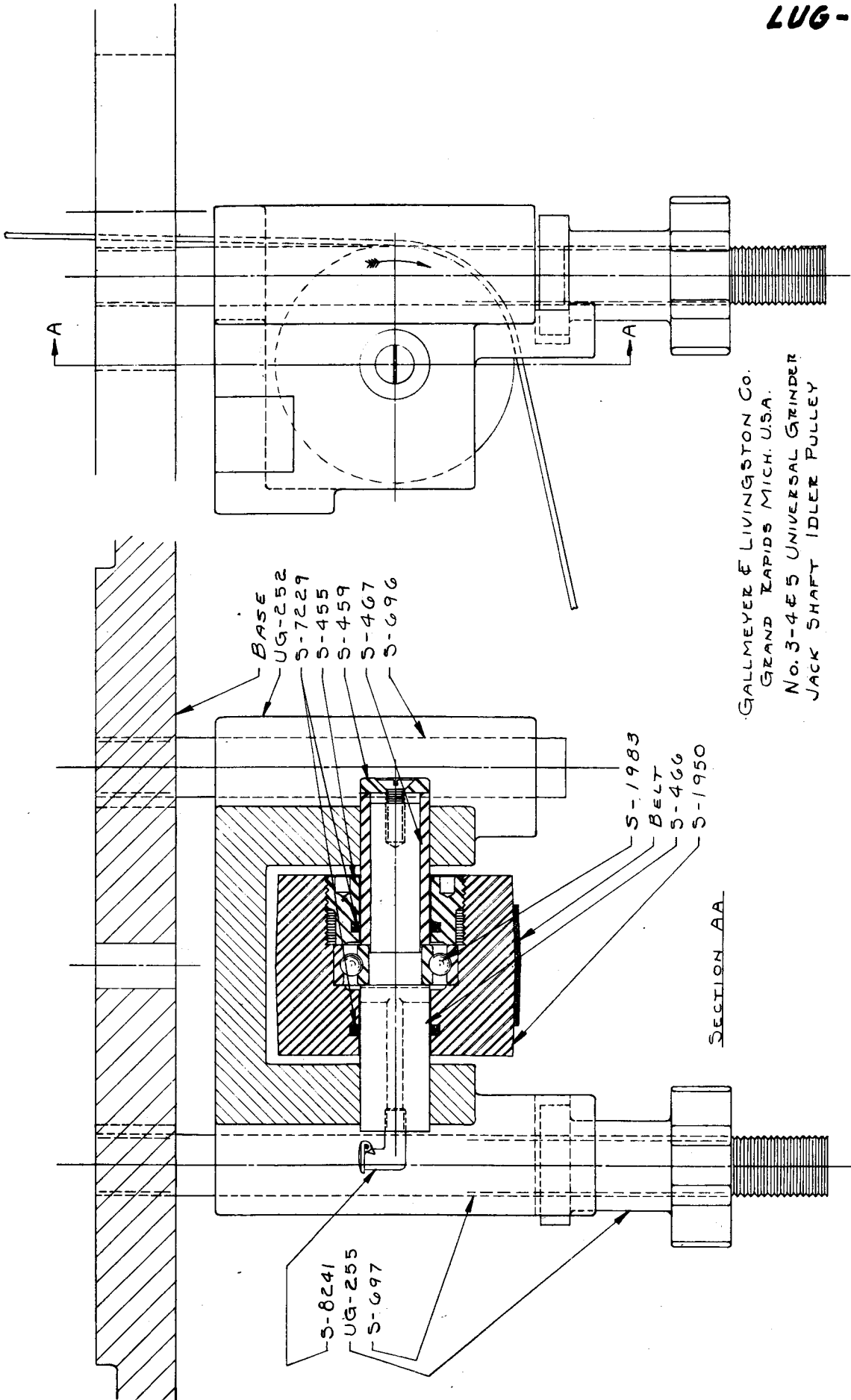
NOTE:
 MACHINES BUILT BEFORE 1930
 WERE PLAT BELT DRIVEN

NO. 3-4-5 UNIVERSAL GRINDERS

JACKSHAFT ASSEMBLY

<u>PART NO.</u>	<u>PART NAME</u>	<u>QUANTITY</u>
UG-22	Bracket	1
UG-23	B.B. Plate	2
UG-58 $\frac{1}{2}$	Pulley (H.F. Wet)	1
UG-59	Pulley (P.F. Wet)	1
UG-249	Pulley (P.F.)	1
UG-263	B.B. Plate (H.F. Dry)	1
UG-340	Pulley (60 Cycle)	1
UG-342	Pulley (50 Cycle)	1
S-461	Jackshaft (P.F. Wet or Dry)	1
S-461 $\frac{1}{2}$	Jackshaft (H.F. Dry)	1
S-463	Washer (C/S)	1
S-564	Spacing Collar (Short)	1
S-565	Spacing Collar (Long)	1
S-695	Friction Bolt	2
S-698	Locating Pin	1
S-699	Locating Pin Knob	1
S-1954	Hinge Stud	1
S-1986	Ball Bearing	2
S-2063	Jackshaft (H.F. Wet)	1
S-2128	Vee Belt	3
S-3668	Spring	1
S-8233	Straight Oiler	1
S-8241	Elbow Oiler	1
S-12004	Spacer Collar (P.F. Dry)	1
S-12039	Felt Ring	2
S-12040	Nut	1
S-12705	Nut	2

LUG-1051



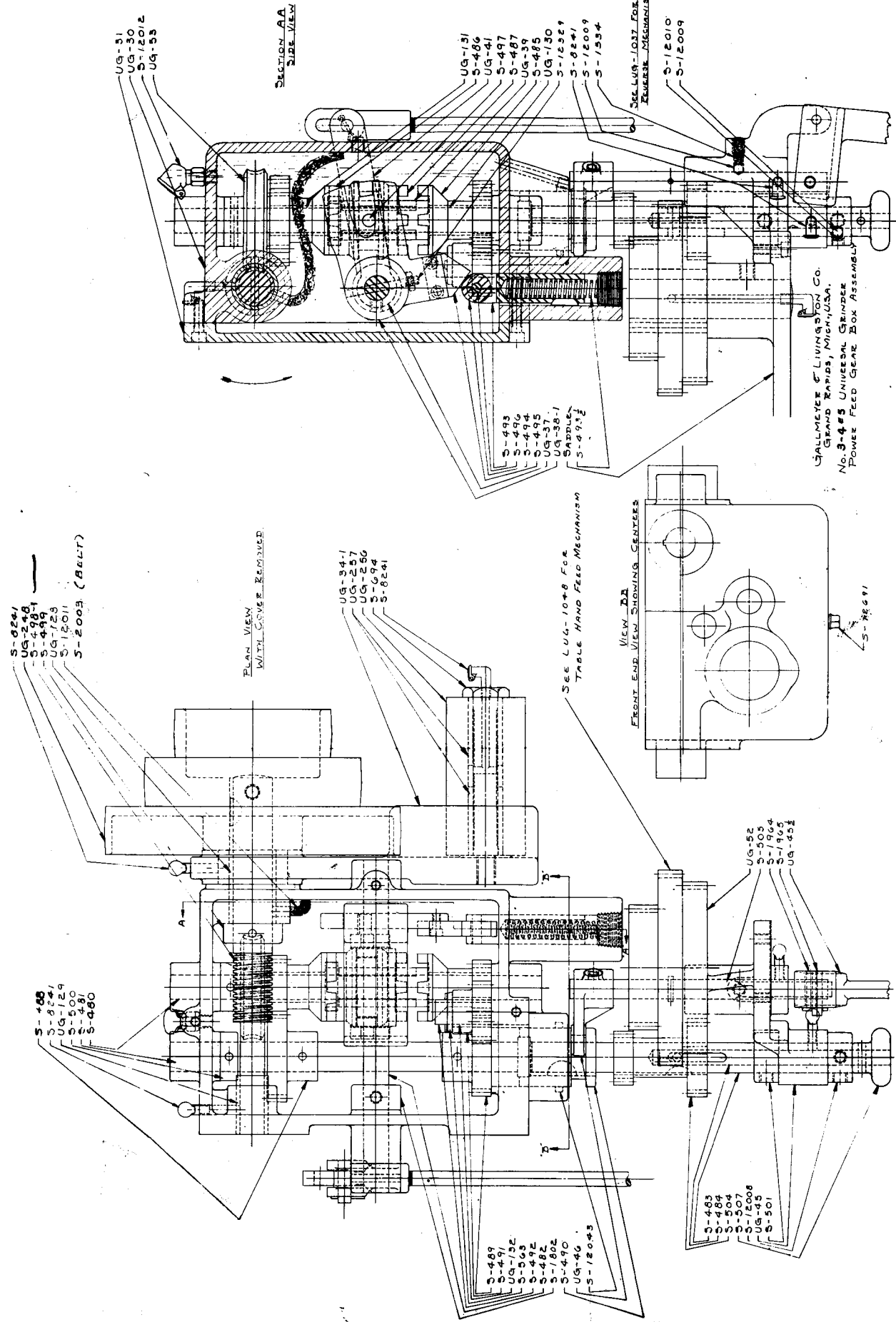
GALLMEYER & LIVINGSTON Co.
GRAND RAPIDS MICH. U.S.A.
No. 3-4-5 UNIVERSAL GRINDER
JACK SHAFT IDLER PULLEY

NO. 3-4-5 UNIVERSAL GRINDERS

JACKSHAFT IDLER PULLEY

<u>PART NO.</u>	<u>PART NAME</u>	<u>QUANTITY</u>
UG-252	Idler Bracket	1
UG-255	Adjusting Knob	1
S-455	B.B. Lock Nut	1
S-459	Washer (C/S)	1
S-466	Idler Shaft	1
S-467	Bronze Bushing	1
S-696	Short Stud	1
S-697	Long Stud	1
S-1950	Idler Pulley	1
S-1983	Ball Bearing	1
S-7229	Felt Ring	1
S-8241	Elbow Oiler	1

LUG-1046



SECTION AA
SIDE VIEW

PLAN VIEW
WITH COVERS REMOVED

FRONT END VIEW
SHOWING CENTERS

GALLMEYER & LIVINGSTON CO.
GRAND RAPIDS, MICH., U.S.A.
No. 3-4#5 UNIVERSAL GEARER
POWER FEED GEAR BOX ASSEMBLY

SEE LUG-1037 FOR
REVERSE MECHANISM

SEE LUG-1048 FOR
TABLE HAND FEED MECHANISM

- S-624/
- UG-248
- S-498-1
- S-499
- UG-129
- S-12011
- S-2003 (BELT)

- UG-34-1
- UG-257
- UG-556
- S-524
- S-6241

- S-469
- S-471
- S-472
- S-482
- S-487
- S-490
- UG-46
- S-12043

- S-469
- S-471
- S-472
- S-482
- S-487
- S-490
- UG-46
- S-12043

- S-469
- S-471
- S-472
- S-482
- S-487
- S-490
- UG-46
- S-12043

- UG-52
- S-503
- S-1964
- S-1905
- UG-452

- UG-131
- S-486
- UG-41
- S-487
- UG-58
- S-485
- UG-130
- S-12521
- S-6241
- S-12009
- S-1534

- S-12010
- S-12009

S-7861

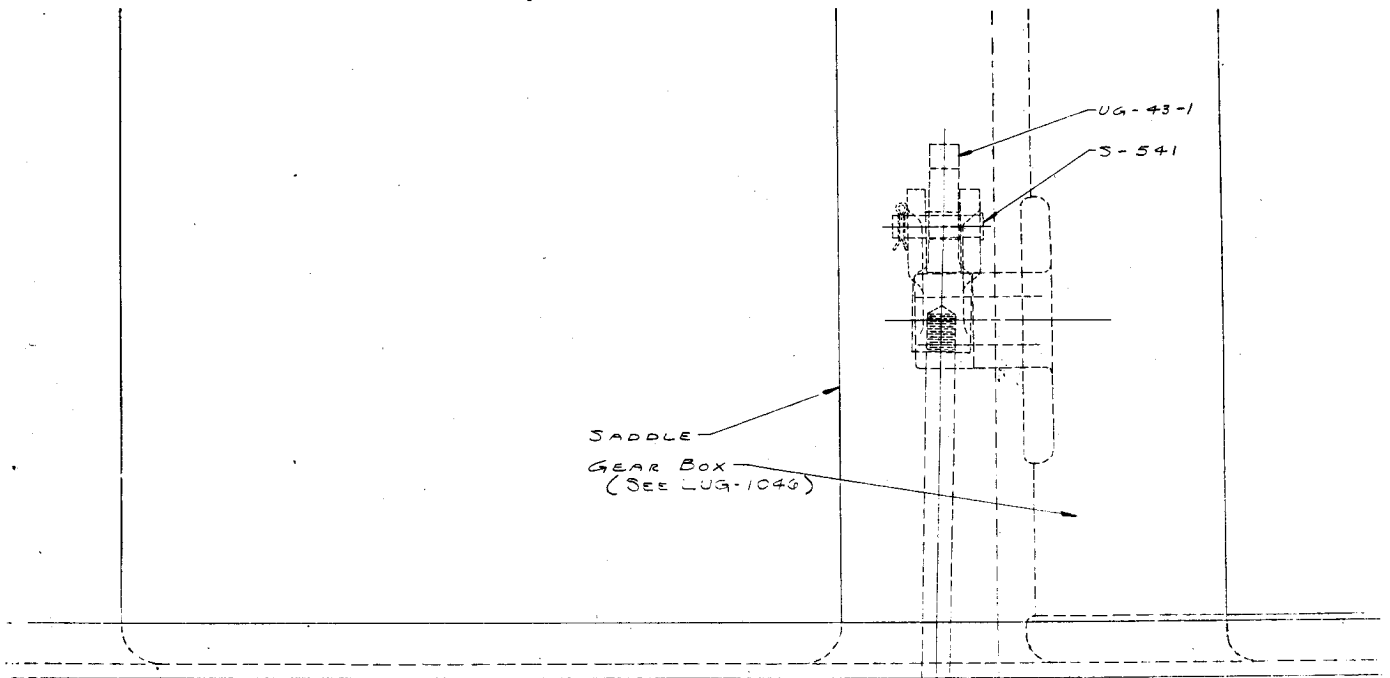
NO. 3-4-5 UNIVERSAL GRINDERS

POWER FEED GEAR BOX ASSEMBLY

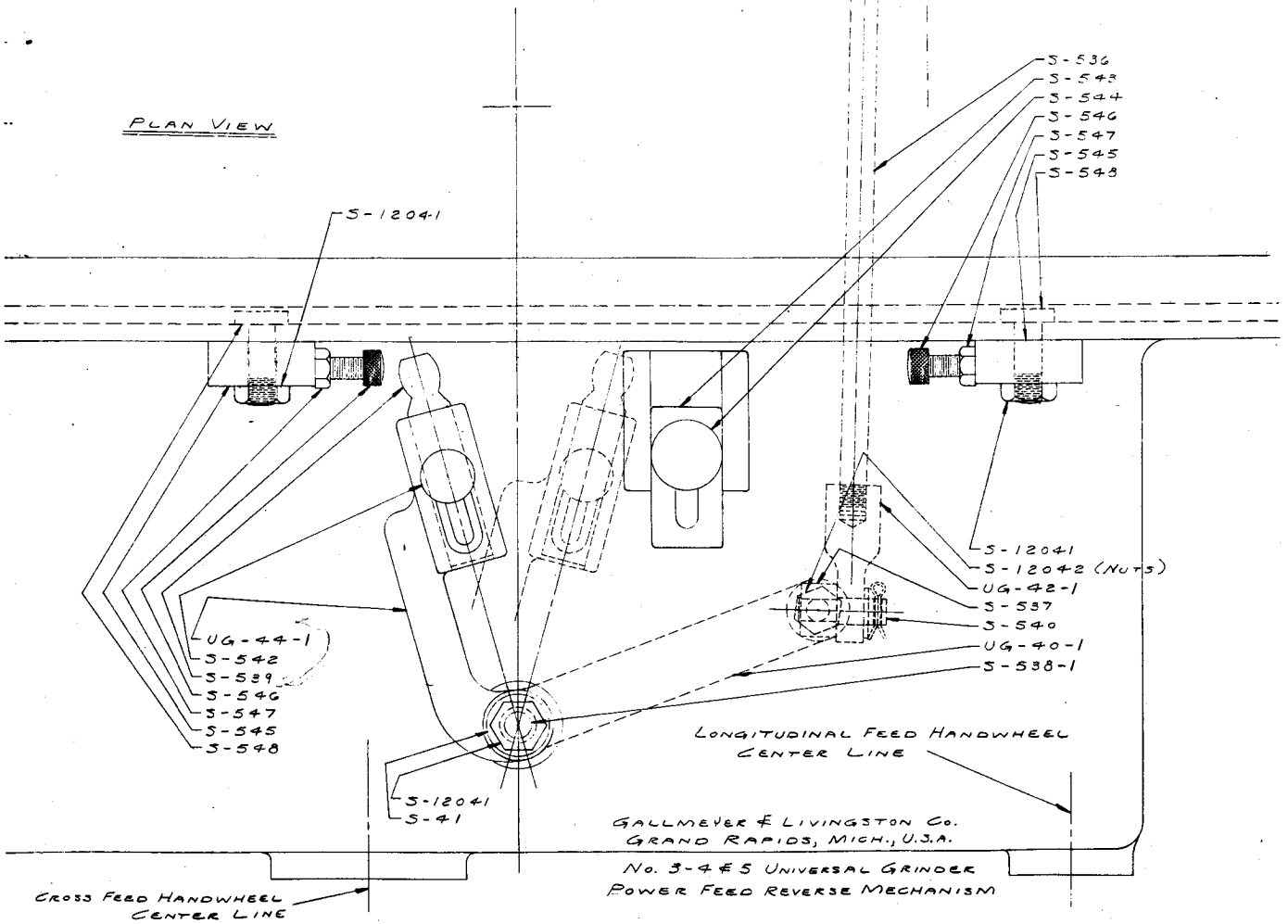
<u>PART NO.</u>	<u>PART NAME</u>	<u>QUANTITY</u>
UG-30	Gear Box	1
UG-31	Gear Box Cover	1
UG-34-1	Idler Pulley Arm	1
UG-37	Clutch Throw Yoke	1
UG-38-1	Reverse Shaft Yoke	1
UG-39	Clutch Sleeve	1
UG-41	Reverse Link	1
UG-45	Control Bracket	1
UG-45 $\frac{1}{2}$	Stop & Start Lever	1
UG-46	Stop & Start Fork	1
UG-52	42 T. Gear	1
UG-53	Worm Gear	1
UG-128	Bronze Bushing	1
UG-129	Bronze Bushing	1
UG-130	Bronze Bushing	1
UG-131	Bronze Bushing	1
UG-132	Bronze Bushing	1
UG-248	Pulley	1
UG-256	Idler Pulley	1
UG-257	Bronze Bushing	2
S-480	Clutch Shaft	1
S-481	Intermediate Gear Shaft	1
S-482	Reverse Shaft	1
S-483	Feed Change Shaft	1
S-484	Feed Change Gear Rod	1
S-485	12 T. Clutch Gear	1
S-486	14 T. Clutch Gear	1
S-487	Reverse Clutch	1
S-488	21 T. Gear	1
S-489	18 T. Gear & Clutch	1
S-490	Stop & Start Clutch	1
S-491	14 T. Idler Gear	1
S-492	Idler Gear Shaft	1
S-493	Cam Roller Fork	1
S-493 $\frac{1}{2}$	Cam Roller Fork Spring	1
S-494	Cam Roller	1
S-495	Cam	1
S-496	Roller Pin	1
S-497	Shifter Blocks	2
S-498-1	Worm & Shaft	1
S-499	Collar	1
S-500	Collar	1
S-501	Collar	1
S-504	Feed Change Gear	1
S-505	Stop & Start Shaft	1
S-507	Feed Change Knob	1
S-563	Washer	1
S-694	Idler Pulley Stud	1
S-1534	Spring (Stop & Start)	1
S-1802	Collar	1

S-1964	Stop & Start Shaft Pin	1
S-1965	Stop & Start Lever Pin	1
S-2003	Drive Belt	1
S-8241	Elbow Oiler	5
S-12008	Collar	1
S-12009	Locating Ball	2
S-12010	Spring (Feed Change)	1
S-12011	Oil Wick	1
S-12012	Oil Cup	1
S-12043	Felt Ring	1
S-12329	Threaded Taper Pin	1
S-12691	Pipe Plug	1

LUG-1037

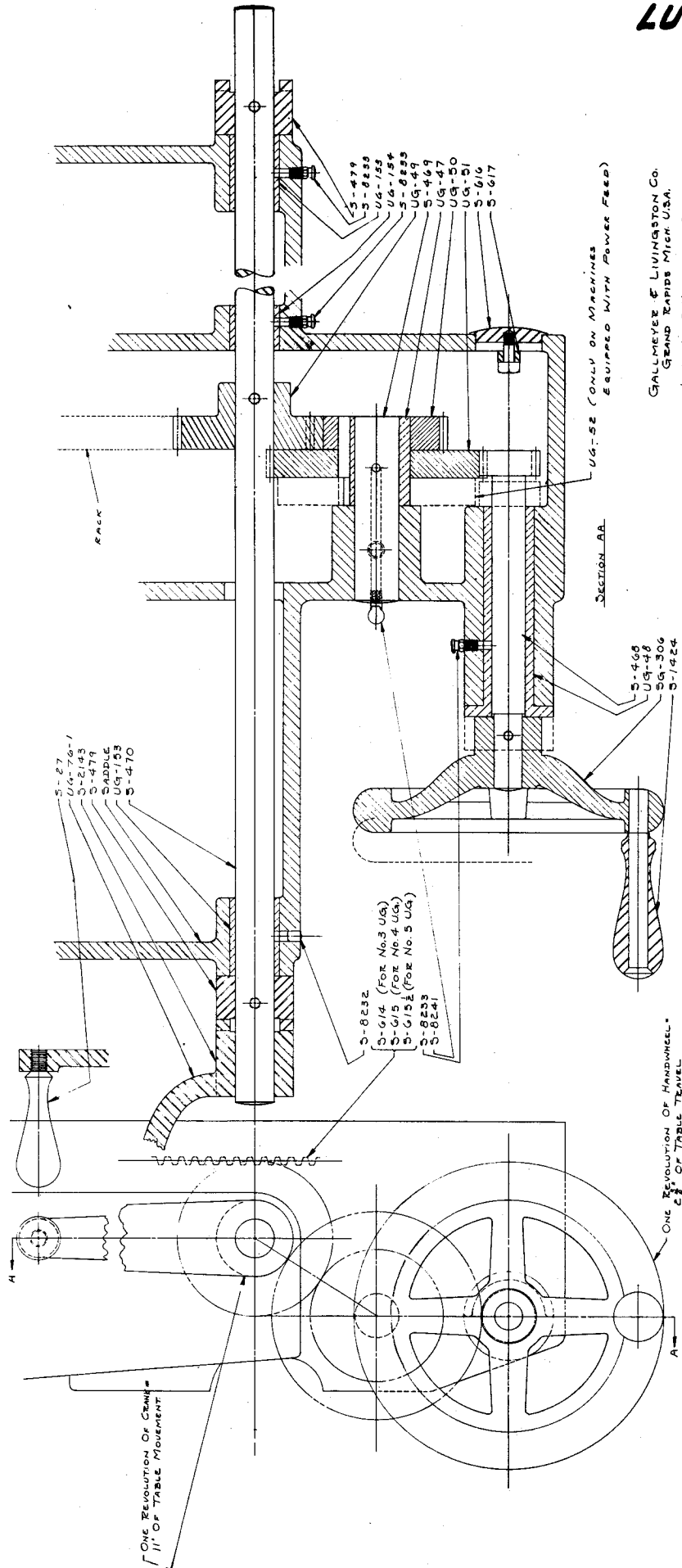


PLAN VIEW



NO. 3-4-5 UNIVERSAL GRINDERS
POWER FEED REVERSE MECHANISM

<u>PART NO.</u>	<u>PART NAME</u>	<u>QUANTITY</u>
UG-40-1	Bell Crank Link	1
UG-42-1	Connecting Rod Eye	1
UG-43-1	Connecting Rod Slotted Eye	1
UG-44-1	Reverse Lever	1
S-41	Washer	1
S-536	Connecting Rod	1
S-537	Swivel Stud	1
S-538-1	Reverse Lever Stud	1
S-539	Reverse Lever Pin	1
S-540	Eye Pin	1
S-541	Slotted Eye Pin	1
S-542	Thumb Screw	1
S-543	Stop Block	1
S-544	Stop Block Clamp Screw	1
S-545	Trip Dog	2
S-546	Trip Dog Screw	2
S-547	Trip Dog Screw Lock Nut	2
S-548	Trip Dog Tee Bolt	2
S-12041	Nut	2
S-12042	Nut	2



UG-52 (ONLY ON MACHINES
EQUIPPED WITH POWER FEED)

GALLMEYER & LIVINGSTON CO.
GRAND RAPIDS MICH. U.S.A.

NO. 3-4-5 UNIVERSAL GRINDER
LONGITUDINAL TABLE HAND FEED ASSEMBLY

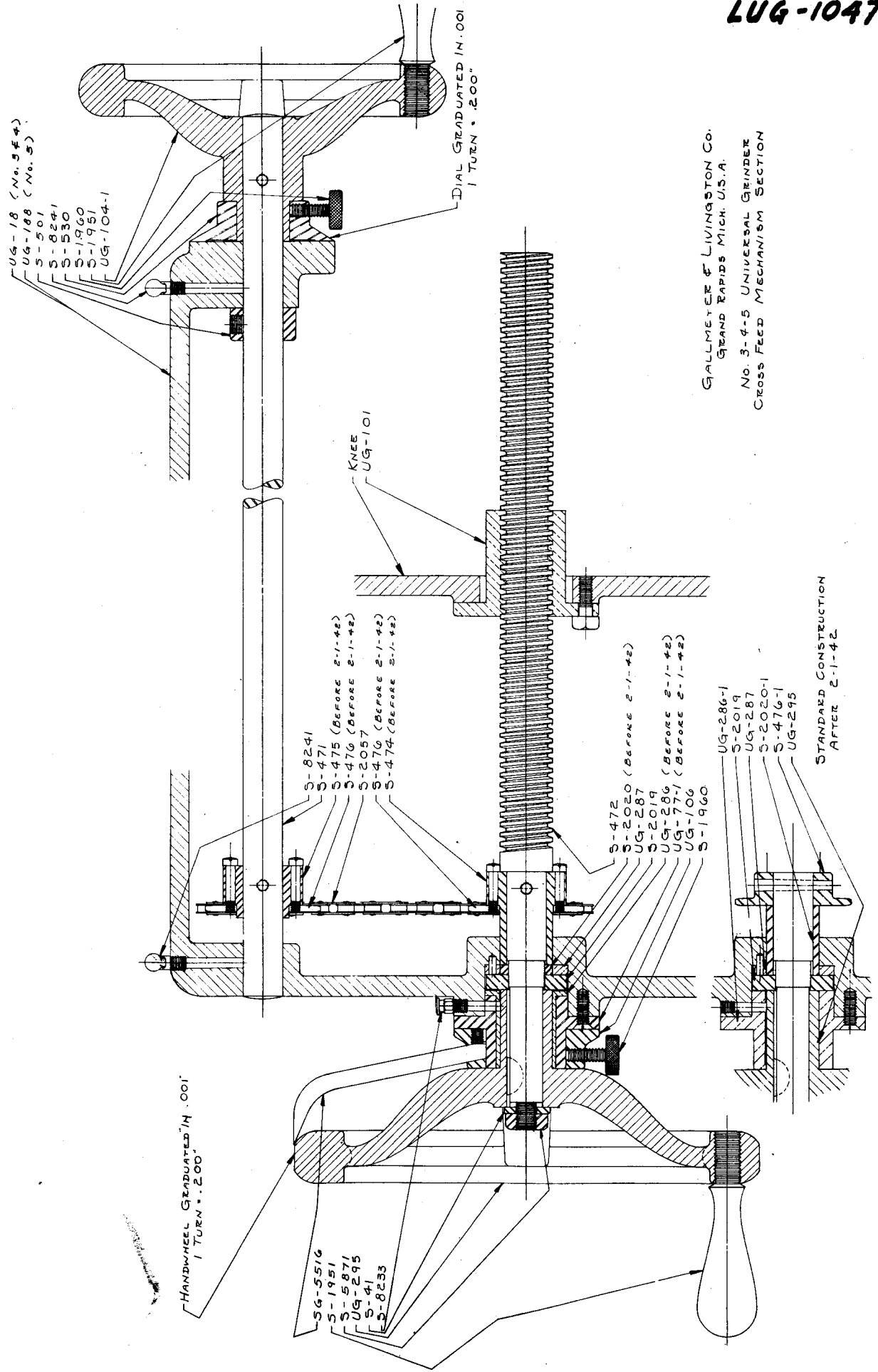
ONE REVOLUTION OF HANDWHEEL =
1/8" OF TABLE TRAVEL

ONE REVOLUTION OF GEAR =
11" OF TABLE MOVEMENT

NO. 3-4-5 UNIVERSAL GRINDERS

TABLE HAND FEED ASSEMBLY

<u>PART NO.</u>	<u>PART NAME</u>	<u>QUANTITY</u>
UG-47	Gear Bronze Bushing	1
UG-48	Bronze Bushing	1
UG-49	Rack Gear	1
UG-50	30 T. Gear	1
UG-51	48 T. Gear	1
UG-52	42 T. Gear (P.F. only)	1
UG-76-1	Handle	1
UG-153	Bronze Bushing (Ends)	2
UG-154	Bronze Bushing (Center)	1
UG-306	Handwheel	1
S-27	Handle	1
S-468	Pinion & Shaft	1
S-469	Idler Shaft	1
S-470	Rack Gear Shaft	1
S-479	Clutch	2
S-614	Rack (No. 3)	1
S-615	Rack (No. 4)	1
S-615 $\frac{1}{2}$	Rack (No. 5)	1
S-616	Cover	1
S-617	Cover Clamp	1
S-1424	Handle (Quick Action)	1
S-2143	Handle Clutch	1
S-8232	Ball Oiler	1
S-8233	Straight Oiler	3
S-8241	Elbow Oiler	1



GALLMEYER & LIVINGSTON CO.
GRAND RAPIDS MICH. U.S.A.
NO. 3-4-5 UNIVERSAL GRINDER
CROSS FEED MECHANISM SECTION

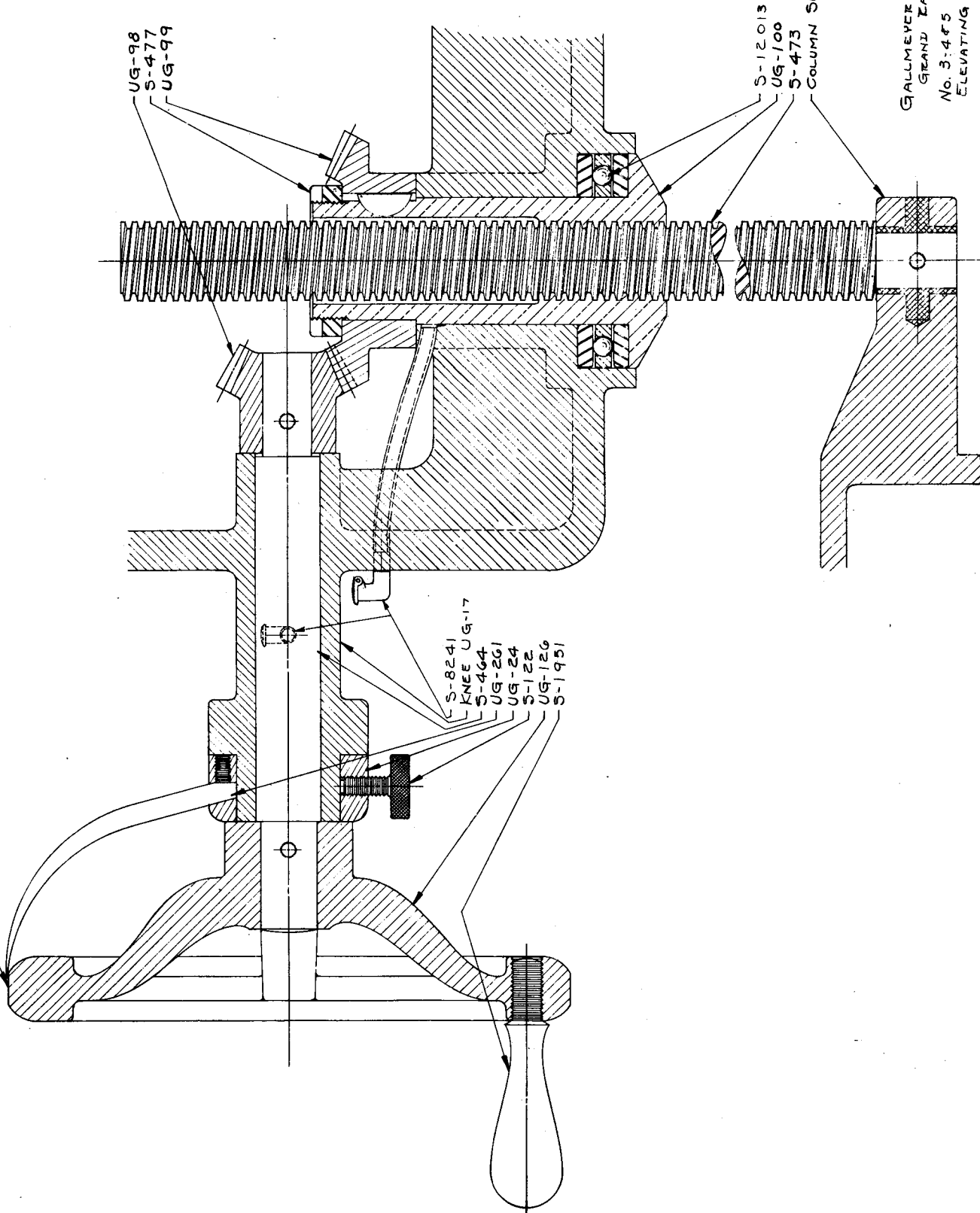
NO. 3-4-5 UNIVERSAL GRINDERS

CROSS FEED MECHANISM

<u>PART NO.</u>	<u>PART NAME</u>	<u>QUANTITY</u>
UG-18	Saddle (No. 3 & 4)	1
UG-77-1	B.B. Plate (Obsolete 2/1/42)	1
UG-101	C.F. Nut	1
UG-104-1	Auxiliary Handwheel	1
UG-106	Pointer Collar (Front)	1
UG-188	Saddle (No. 5)	1
UG-286	Bronze Bearing (Obsolete 2/1/42)	1
UG-286-1	B.B. Plate & Bearing	1
UG-287	Bronze Thrust Bearing	1
UG-295	Front Handwheel	1
SG-5516	Pointer (Front)	1
S-41	Washer	1
S-471	Auxiliary Shaft	1
S-472	C.F. Screw	1
S-474	Sprocket Bushing (Obsolete 2/1/42)	1
S-475	Sprocket Bushing (Obsolete 2/1/42)	1
S-476	Sprocket (Obsolete 2/1/42)	2
S-476-1	Sprocket (2/1/42)	2
S-501	Collar	1
S-530	Dial (Auxiliary)	1
S-1951	Handle	2
S-1960	Thumb Screw	2
S-2019	Bearing Plate	1
S-2020	Collar (Obsolete 2/1/42)	1
S-2020-1	Collar (2/1/42)	1
S-2057	Chain	1
S-5871	Nut	1
S-8233	Straight Oiler	1
S-8241	Elbow Oiler	2

LUG-1044

HANDWHEEL GRADUATED IN .001" / TURN .100"



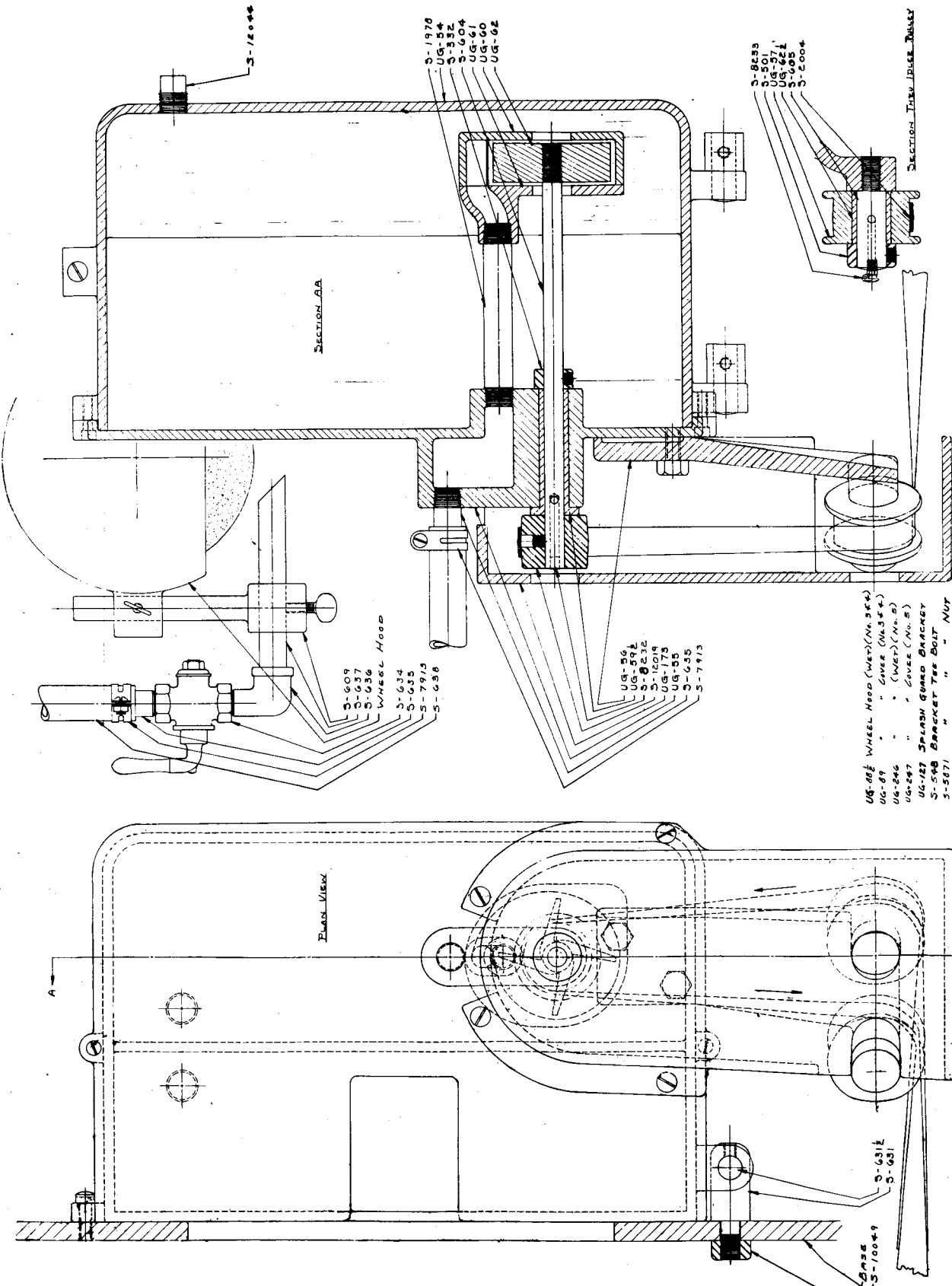
GALLMEYER & LIVINGSTON CO.
GRAND RAPIDS MICH. U.S.A.
NO. 3-4 FS UNIVERSAL GRINDER
ELEVATING MECHANISM SECTION

NO. 3-4 & 5 UNIVERSAL GRINDER

ELEVATING MECHANISM

<u>PART NO.</u>	<u>PART NAME</u>	<u>QUANTITY</u>
UG-17	Knee	1
UG-24	Pointer Collar	1
UG-98	Pinion	1
UG-99	Bevel Gear	1
UG-100	Elevating Nut	1
UG-126	Handwheel	1
UG-261	Dial Pointer	1
S-122	Thumb Screw	1
S-464	Handwheel Shaft	1
S-473	Elevating Screw	1
S-477	Lock Nut	1
S-1951	Handwheel Handle	1
S-8241	Elbow Oiler	1
S-12013	Thrust Bearing	1

LUG-1050



SECTION AA

PLAN VIEW

SECTION THERMIPLEX RALLY

- S-609
- S-637
- S-636
- Wheel Hood
- S-634
- S-635
- S-7913
- S-638

- UG-56
- UG-592
- S-8232
- UG-173
- UG-55
- S-635
- S-7913

- S-8533
- S-8507
- UG-621
- S-605
- S-2004

- UG-015 Wheel Hood (WET) (No. 564)
- UG-69 " " GASKET (No. 544)
- UG-246 " " (WET) (No. 5)
- UG-247 " " GASKET (No. 5)
- UG-227 Splash Guard Bracket
- S-548 Bracket Tee Bolt
- S-5871 " " Nut
- S-586 " " ROD (No. 324)
- S-585 " " (No. 5)
- S-1875 Splash Guard (3)
- S-1876 " " (2)
- S-1974 Headstock Splash Guard
- S-1974 Tailstock " "
- S-1971 Tray " "
- S-1972-1 Sprockle " "

TANK CAPACITY - 4 GAL.
PUMP CAPACITY - 4 GAL./MIN.

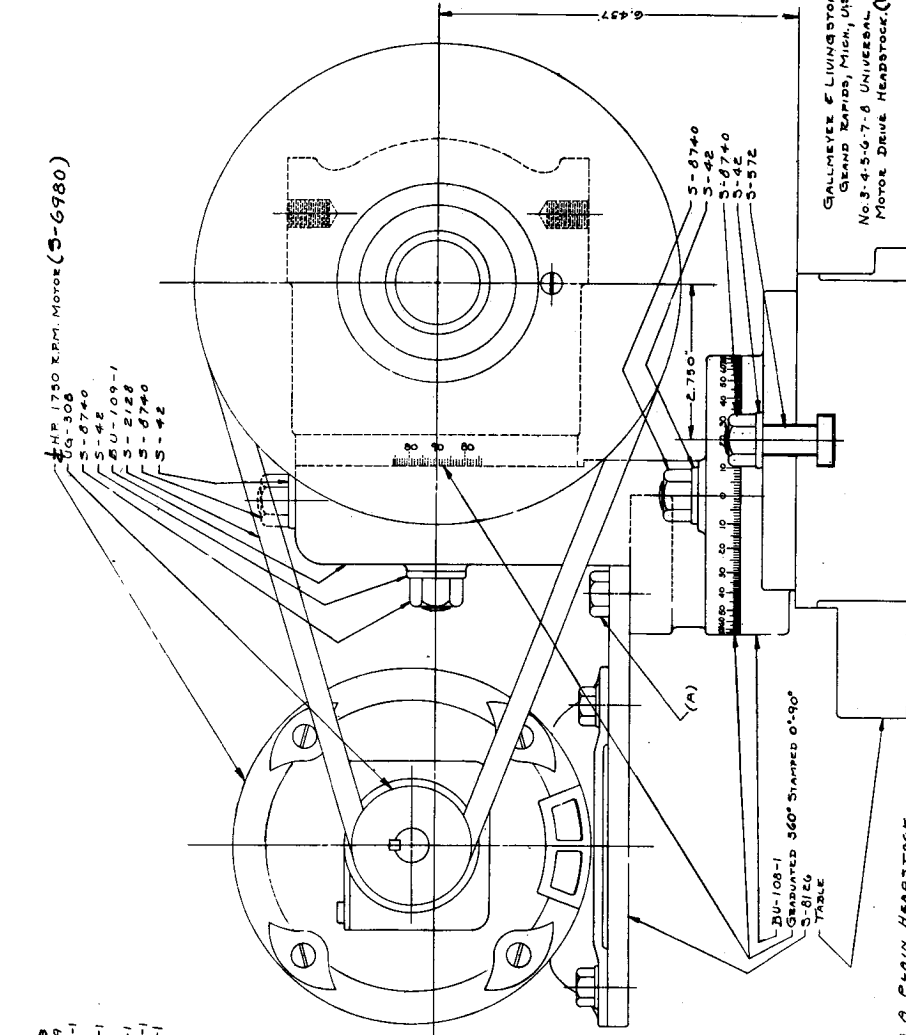
GALLMEYER & LIVINGSTON CO
GRAND RAPIDS, MICH., U.S.A.
NO. 3-4-F UNIVERSAL GRINDER
COOLANT SYSTEM

NO. 3-4-5 UNIVERSAL GRINDERS

COOLANT SYSTEM

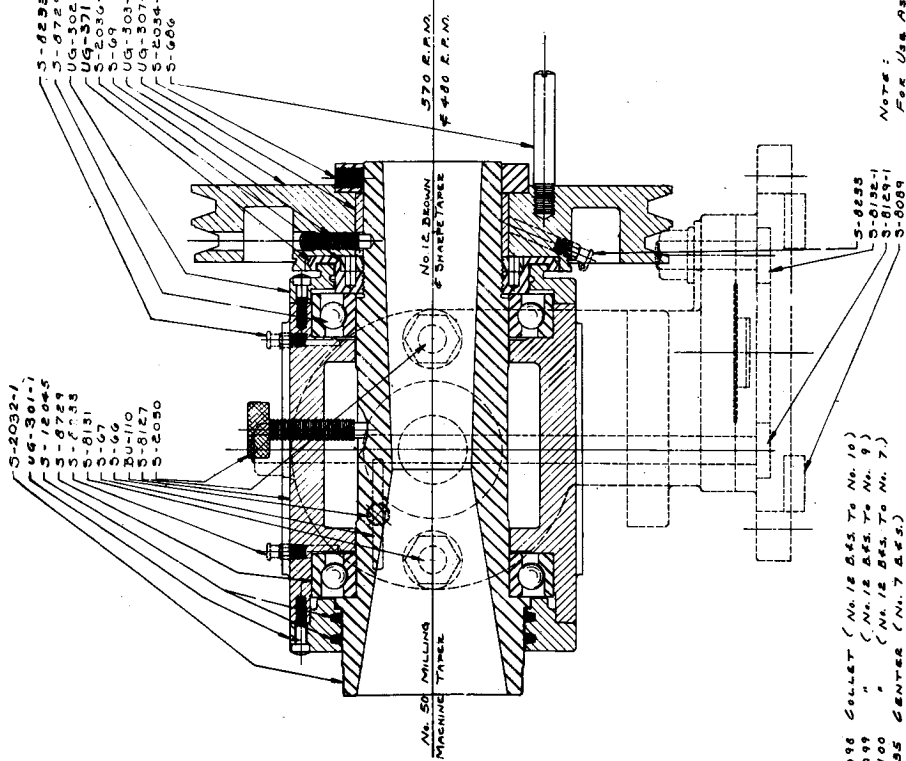
<u>PART NO.</u>	<u>PART NAME</u>	<u>QUANTITY</u>
UG-54	Tank	1
UG-55	Tank Cover	1
UG-56	Idler Bracket	1
UG-57	Idler Pulley	2
UG-59 $\frac{1}{2}$	Bronze Bushing	1
UG-60	Pump Case	1
UG-61	Pump Case Cover	1
UG-62	Impeller	1
UG-62 $\frac{1}{2}$	Bronze Bushing	2
UG-88 $\frac{1}{2}$	Wheel Hood (Wet) (No. 3 & 4)	1
UG-89	Wheel Hood Cover (No. 3 & 4)	1
UG-127	Splash Guard Bracket	2
UG-173	Idler Guard	1
UG-246	Wheel Hood (Wet) (No. 5)	1
UG-247	Wheel Hood Cover (No. 5)	1
S-332	Collar	1
S-501	Collar	2
S-548	Bracket Tee Bolt	2
S-585	Bracket Rod (No. 5)	1
S-586	Bracket Rod (No. 3 & 4)	1
S-604	Pump Shaft	1
S-605	Idler Shaft	2
S-609	Nozzle Holder	1
S-631	Hinge Stud	2
S-631 $\frac{1}{2}$	Hinge Pin	2
S-634	Stop Cock	1
S-635	1 $\frac{1}{2}$ " Nipple	2
S-636	Street Ell	1
S-637	Nozzle	1
S-638	Hose	1
S-1971	Tray Splash Guard	1
S-1972-1	Saddle Splash Guard	1
S-1973	Headstock Splash Guard	1
S-1974	Tailstock Splash Guard	1
S-1975	Splash Guard (3") (No. 3 & 4)	4
S-1975	Splash Guard (3") (No. 5)	5
S-1976	Splash Guard (6") (No. 3 & 4)	3
S-1976	Splash Guard (6") (No. 5)	4
S-1978	Delivery Pipe	1
S-2004 ✓	✓ Drive Belt	1
S-5871	Tee Bolt Nut	2
S-7913	Hose Clamp	2
S-8232	Ball Oiler	1
S-8233	Straight Oiler	2
S-10049	Nut	2
S-12019	Pump Pulley	1
S-12044	Pipe Plug	2

LUG-1005-2



GALLMEYER & LIVINGSTON CO.
 GRAND RAPIDS, MICH., U.S.A.
 No. 3-4.5-6-7-8 UNIVERSAL GRINDERS
 Motor Drive Headstock (New Belt)

- 1 HP. 1750 R.P.M. Motor (S-6980)
- UG-308
- S-8740
- S-42
- BU-109-1
- S-2128
- S-8740
- S-42



NOTE:
 FOR USE AS A PLAIN HEADSTOCK
 REMOVE VEE BELT S-2128, MOTOR
 BRACKET ASSEMBLY AT POINT (A),
 COLLAR S-2034-1, AND PULLER
 UG-303-1.

- S-2032-1
- UG-301-1
- S-12045
- S-6753
- S-8131
- S-67
- BU-110
- S-8127
- S-2030

- S-6096 COLLET (No. 12 B.S. 76 No. 16)
- S-6098 " (No. 12 B.S. 76 No. 8)
- S-6100 " (No. 12 B.S. 76 No. 7)
- S-5305 CENTER (No. 7 B.S.)
- S-2048 DRAW-IN BELT COLLAR
- S-1838 KNOCK-OUT ROD
- S-6096 WORK-OUT ROD
- S-6237 4-1/8" JAW CHUCK
- BU-127 CHUCK SHANK

NO. 12 MILLING
 MACHINE TAPER

3.70 R.P.M.
 4.80 R.P.M.

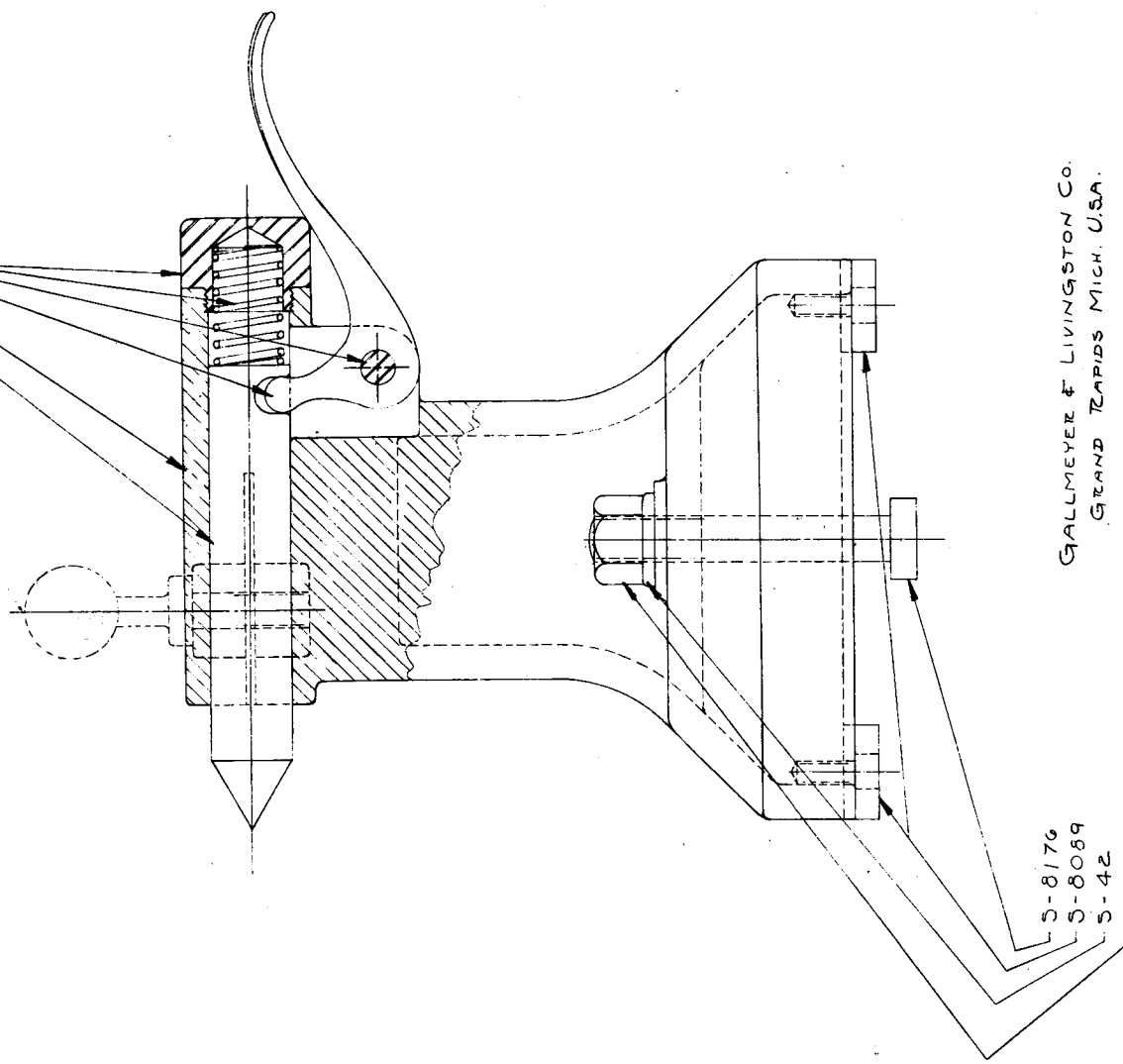
BU-108-1
 GRADUATED 360° STAMPED 0.190"
 TABLE

NO. 3 THRU 8 UNIVERSAL GRINDERS
MOTOR DRIVE HEADSTOCK

<u>PART NO.</u>	<u>PART NAME</u>	<u>QUANTITY</u>
BU-108-1	Base	1
BU-109-1	Main Part	1
BU-110	Swivel Block	1
BU-127	Chuck Shank	1
UG-301-1	Rear Dust Cap	1
UG-302-1	Front Dust Cap	1
UG-303-1	Pulley	1
UG-307-1	Pulley Bushing	1
UG-308	Drive Pulley	1
UG-371	B. B. Nut	1
S-42	Washer	6
S-66	Lock Pin	1
S-67	Lock Pin Handle	1
S-69	Set Screw	1
S-535	Center (No. 7 B & S.)	1
S-572	Tee Bolt	2
S-686	Drive Pin	1
S-1238	Knock-Out Rod	1
S-2032-1	Spindle	1
S-2034-1	Pulley Collar	1
S-2036-1	B. B. Nut Lock Nut	1
S-2042	Draw-In Bolt Collar	1
S-2043	Draw-In Bolt	1
S-2050	Lock Screw	1
S-2128	Vee Belt	1
S-6980	Motor	1
S-8089	Tongue Block	2
S-8096	Work Dog	1
S-8098	Collet (No. 12 B. & S. To No. 10)	1
S-8099	Collet (No. 12 B. & S. To No. 9)	1
S-8100	Collet (No. 12 B. & S. To No. 7)	1
S-8126	Motor Plate	1
S-8127	Tee Bolt	1
S-8129-1	Tee Bolt	1
S-8131	Tee Bolt	1
S-8132-1	Tee Bolt	1
S-8233	Straight Oiler	3
S-8237	4"- 3 Jaw Chuck	1
S-8729	Ball Bearings	2
S-8740	Tee Bolt Nut	6
S-12045	Felt Rings	2

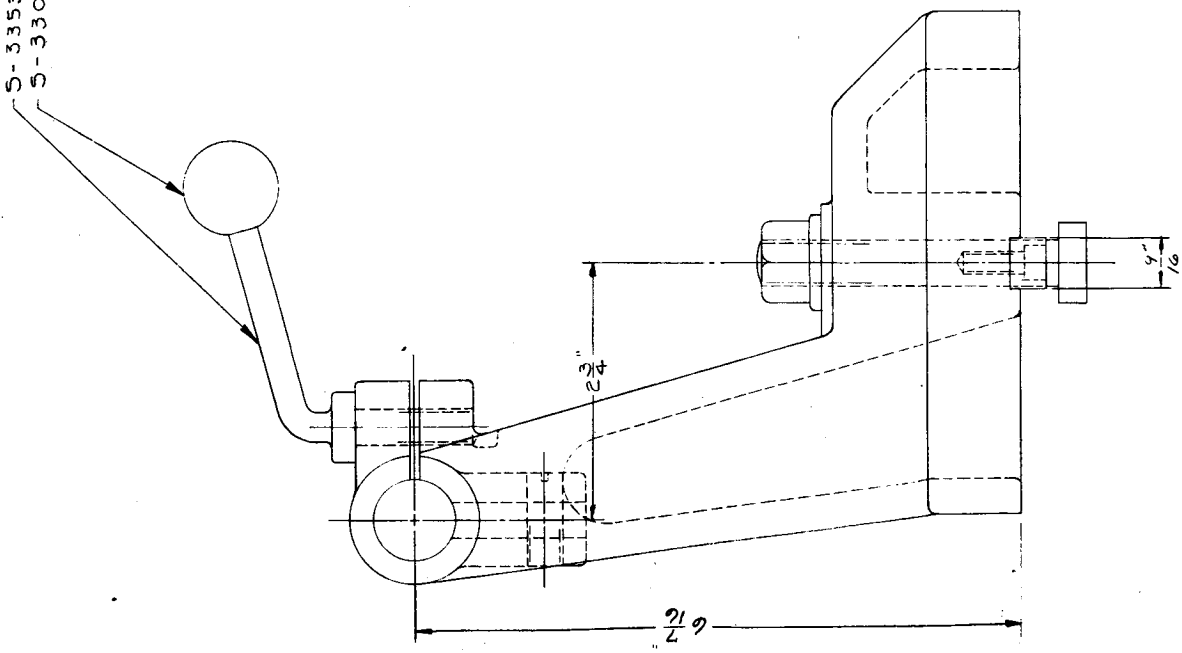
LUG-1052-1

- S-569
- AU-47
- UG-69
- S-570
- S-1560
- S-566



GALLMEYER & LIVINGSTON CO.
GRAND RAPIDS MICH. U.S.A.
No. 3-4-5-6 UNIVERSAL GRINDER
RIGHT HAND TAILSTOCK
(SPRING LOADED CENTER)

- S-3353
- S-3306



NO. 3-4-5 & 6 UNIVERSAL GRINDERS

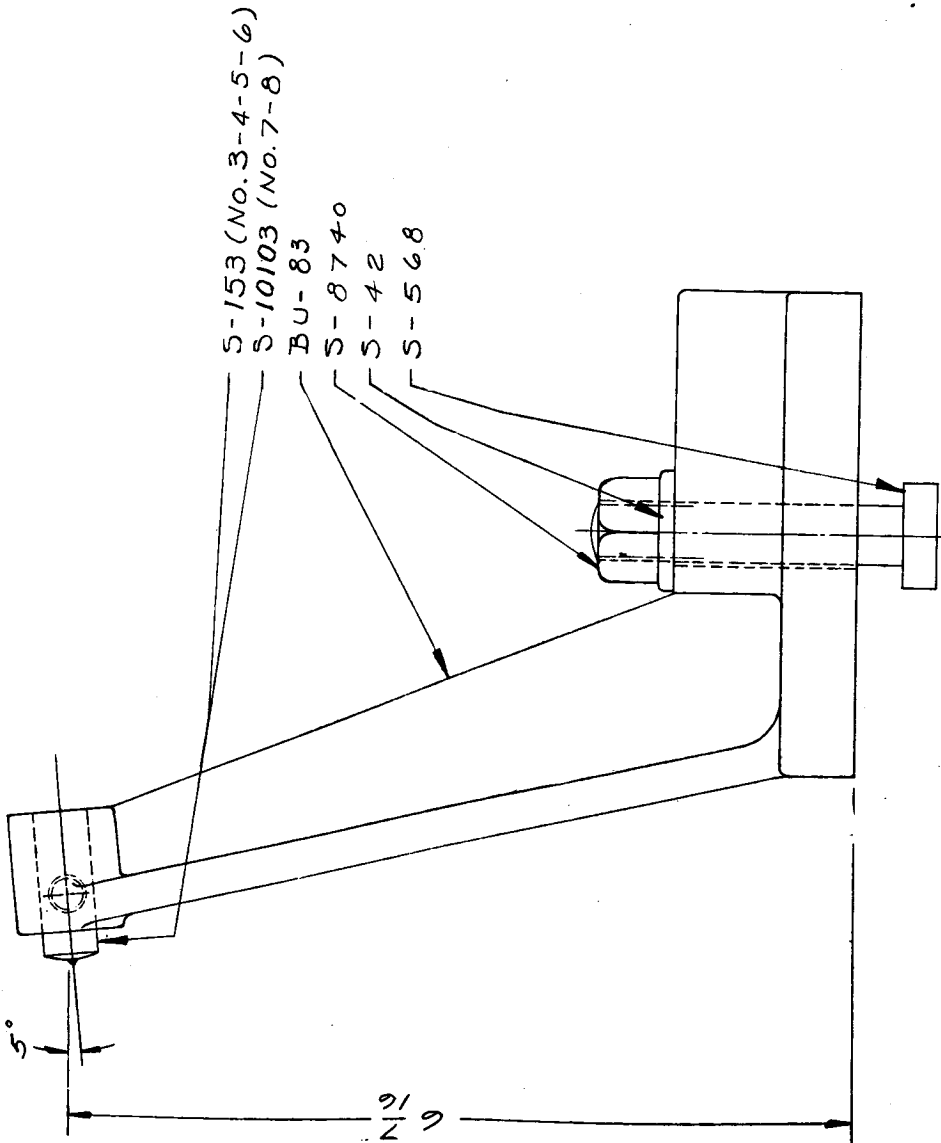
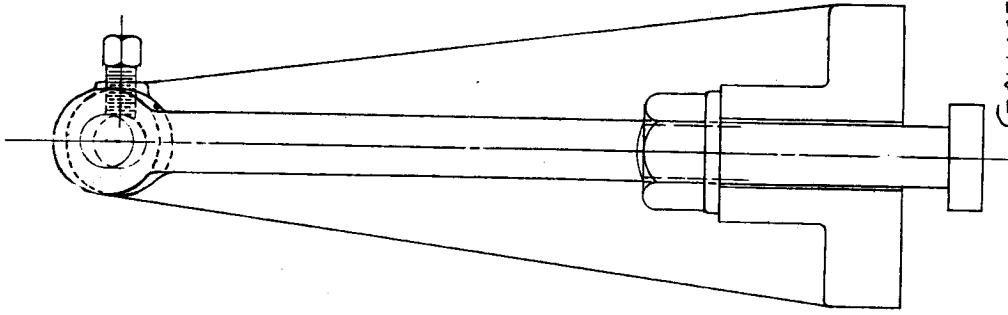
RIGHT HAND TAILSTOCK

<u>PART NO.</u>	<u>PART NAME</u>	<u>QUANTITY</u>
AU-47	Tailstock	1
UG-69	Center Lever	1
S-42	Washer	1
S-566	Spring Cap	1
S-569	Center	1
S-570	Lever Pin	1
S-1560	Spring	1
S-3306	Bakelite Ball	1
S-3353	Clamp Screw	1
S-8089	Tongue Block	1
S-8176	Tee Bolt	1
S-8740	Tee Bolt Nut	1

LUG-1055-1

GALLMEYER & LIVINGSTON CO.
GRAND RAPIDS, MICH., U.S.A.

No. 3 THEU 8 UNIVERSAL GRINDER
WHEEL DRESSER DIAMOND BRACKET



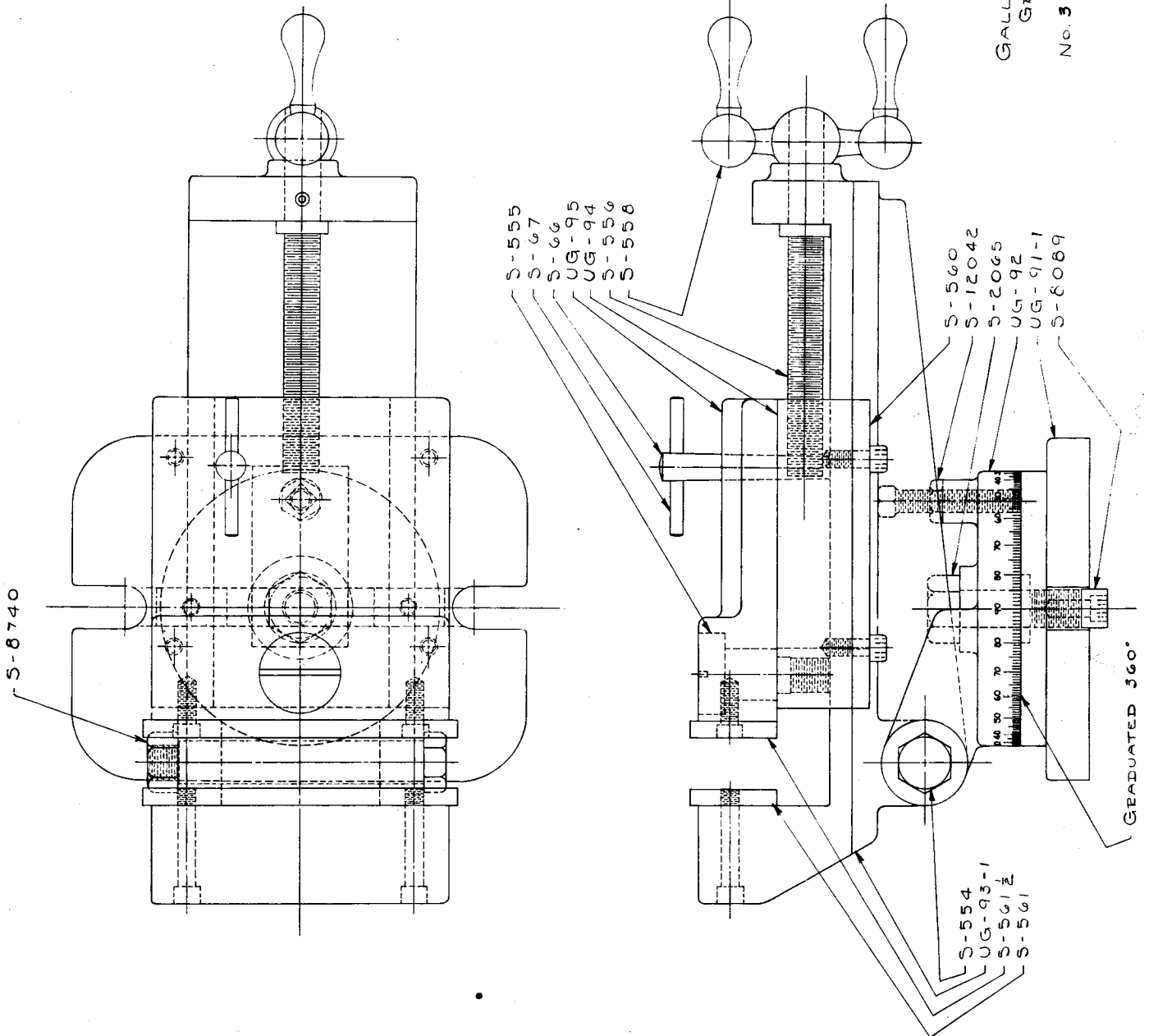
NO. 3 THRU 8 UNIVERSAL GRINDERS
WHEEL DRESSER DIAMOND BRACKET

<u>PART NO.</u>	<u>PART NAME</u>	<u>QUANTITY</u>
BU-83	Bracket	1
S-42	Washer	1
S-153	Diamond (No. 3-4-5-6)	1
S-568	Tee Bolt	1
S-8740	Nut	1
S-10103	Diamond (No. 7 & 8)	1

LUG-1049

GALLMEYER & LIVINGSTON CO.
GRAND RAPIDS, MICH., U.S.A.

NO. 3 THRU 8 UNIVERSAL GRINDER
UNIVERSAL VISE



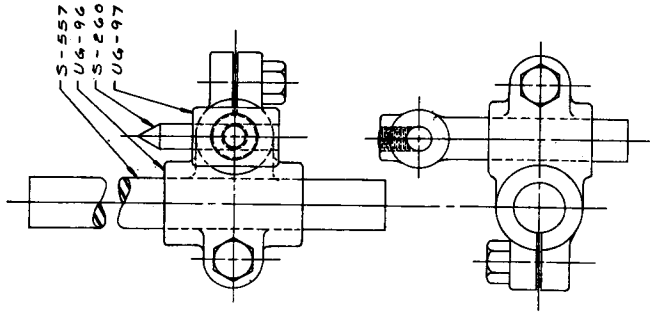
NO. 3 THRU 8 UNIVERSAL GRINDERS

UNIVERSAL VISE

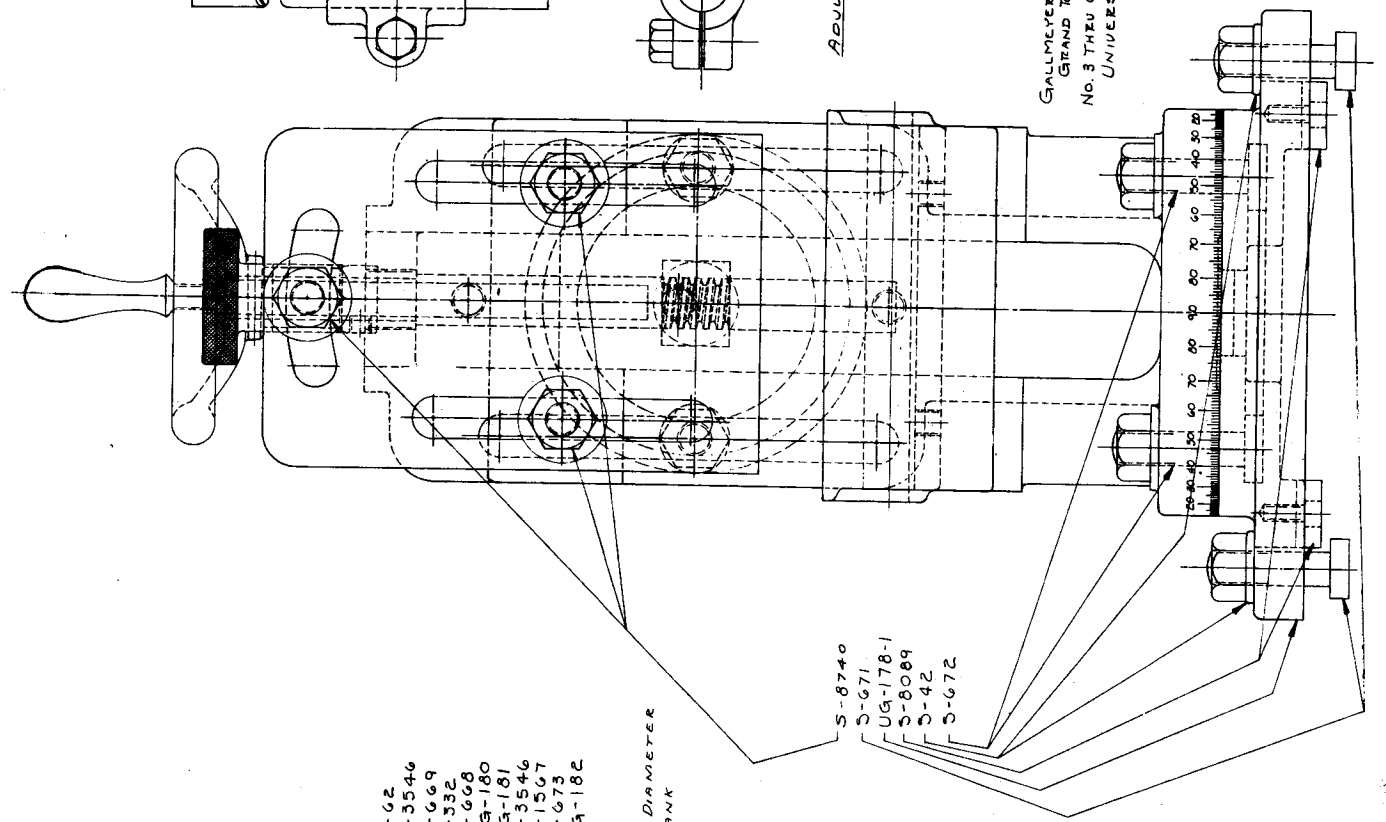
<u>PART NO.</u>	<u>PART NAME</u>	<u>QUANTITY</u>
UG-91-1	Base Plate	1
UG-92	Base	1
UG-93-1	Stationary Jaw	1
UG-94	Sliding Jaw	1
UG-95	Swivel Jaw	1
S-66	Lock Pin	1
S-67	Lock Pin Handle	1
S-554	Clamp Bolt	1
S-555	Swivel Jaw Stud	1
S-556	Feed Screw	1
S-558	Ball Crank Handle	1
S-560	Gib	2
S-561	Swivel Jaw Plate	1
S-561 $\frac{1}{2}$	Stationary Jaw Plate	1
S-2065	Swivel Clamp Screw	1
S-8089	Tongue Block	2
S-8740	Nut	1
S-12042	Lock Nut	1

LUG-1054

GALLMEYER & LIVINGSTON CO.
GRAND RAPIDS, MICH., U.S.A.
No. 3 THRU 8 UNIVERSAL GRINDERS
UNIVERSAL ATTACHMENT



ADJUSTABLE CENTER



- A-62
- S-3546
- S-669
- S-332
- S-668
- UG-180
- S-3546
- S-1567
- UG-182

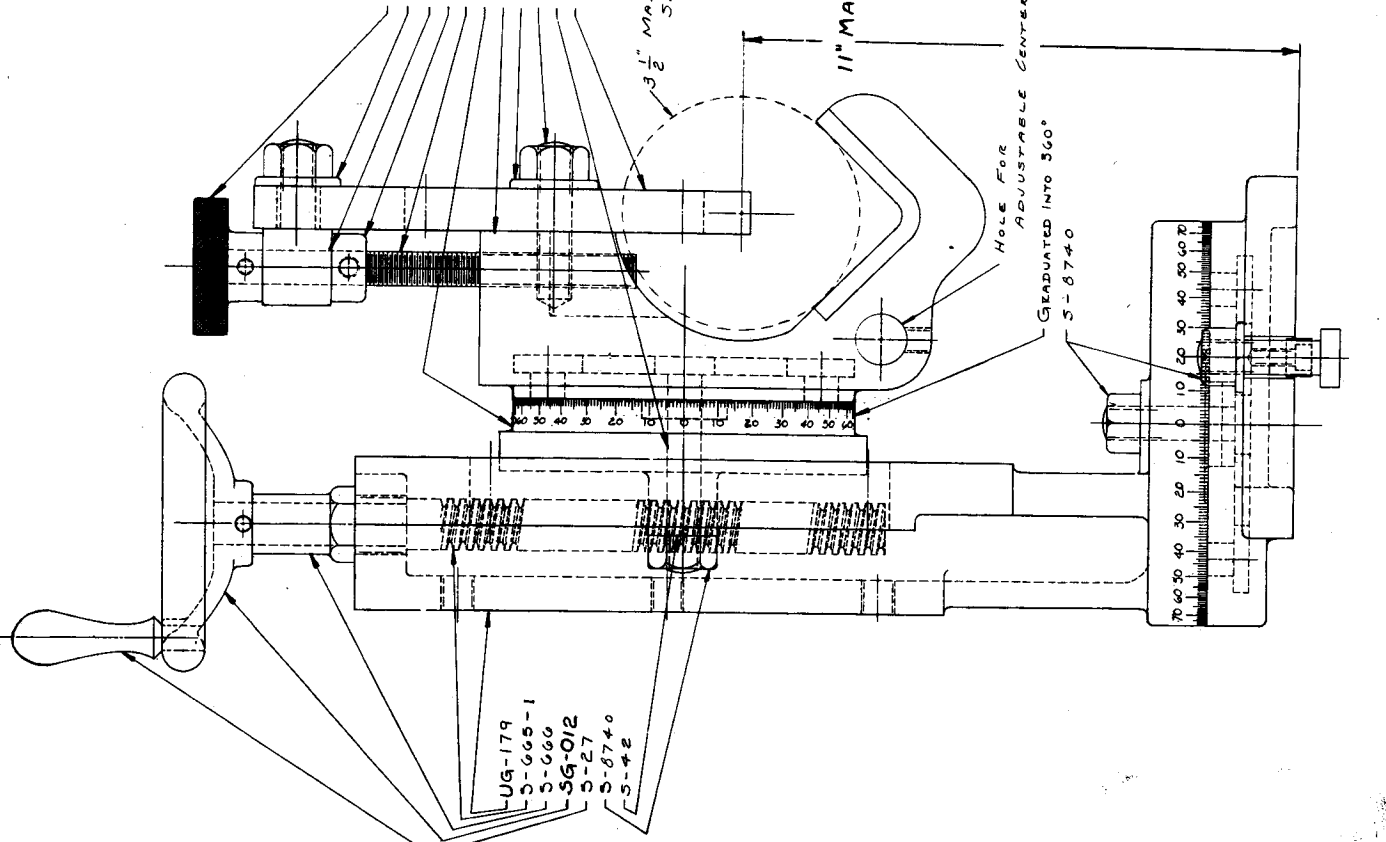
3 1/2" MAX. DIAMETER SHANK

11" MAX.

HOLE FOR ADJUSTABLE CENTER

GRADUATED INTO 360°

S-8740

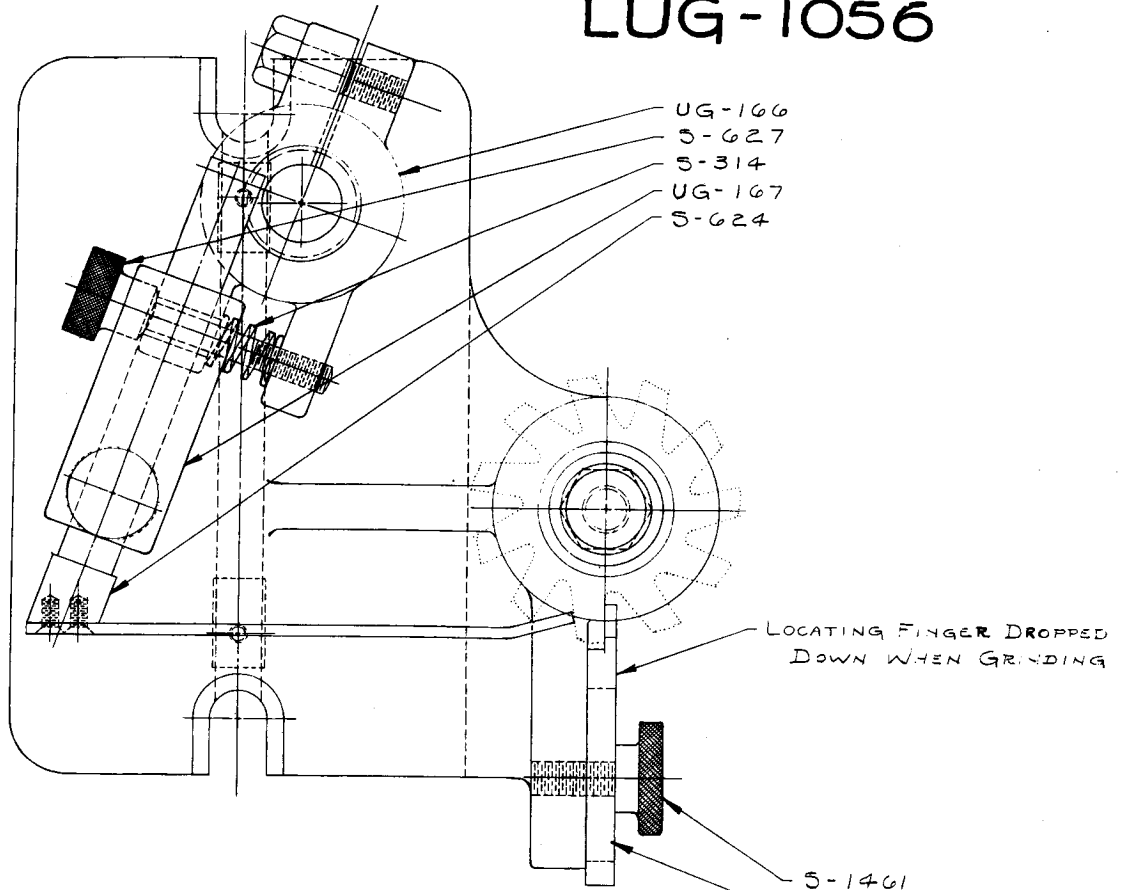


NO. 3 THRU 8 UNIVERSAL GRINDERS

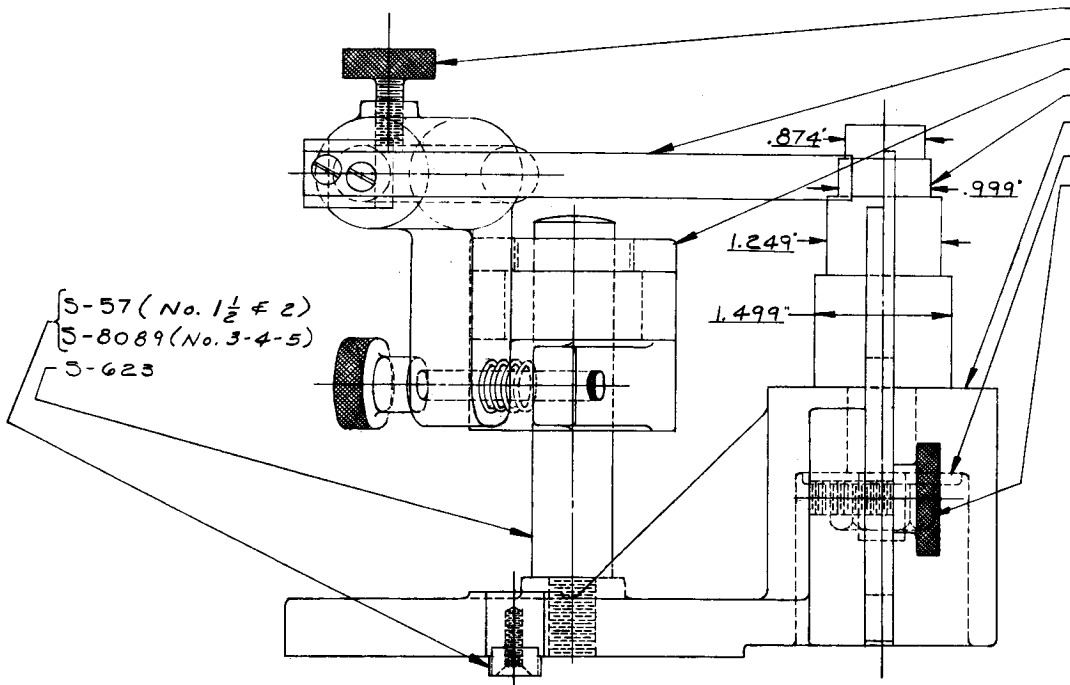
UNIVERSAL ATTACHMENT

<u>PART NO.</u>	<u>PART NAME</u>	<u>QUANTITY</u>
UG-96	Center Holder Clamp	1
UG-97	Center Holder	1
UG-178-1	Base Plate	1
UG-179	Main Part	1
UG-180	Slide	1
UG-181	Vee Block	1
UG-182	Vee Block Plate	1
UG-182 $\frac{1}{2}$	Elevating Handwheel	1
A-62	Plate Adjusting Knob	1
S-27	Handle	1
S-42	Washer	4
S-260	Center	1
S-332	Collar	1
S-557	Center Holder Rod	1
S-665	Elevating Screw	1
S-666	Elevating Screw Bearing	1
S-668	Plate Adjusting Screw	1
S-669	Plate Adjusting Screw Bearing	1
S-671	Base Tee Bolt	2
S-672	Swivel Tee Bolt	2
S-673	Vee Block Tee Bolt	2
S-1567	Plate Stud	2
S-3546	Washer	3
S-8089	Tongue Block	2
S-8740	Nut	9

LUG-1056



- S-1461
- S-621
- S-122
- S-625
- S-630
- S-622
- UG-165
- S-12017
- S-10049 (NUT)

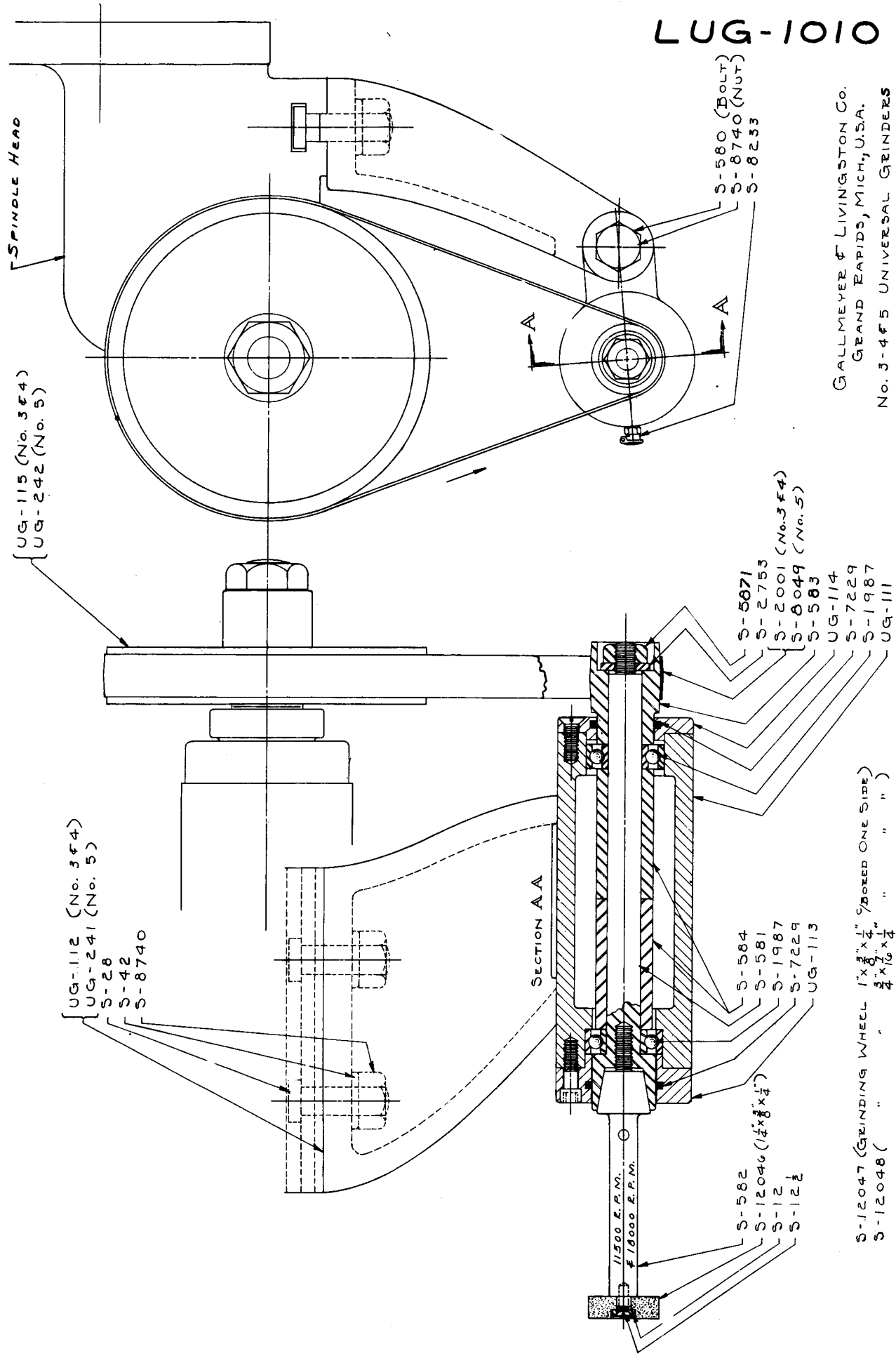


GALLMEYER & LIVINGSTON Co.
 GRAND RAPIDS, MICH., U.S.A.
 No. 1 1/2-2-3-4 F 5 UNIVERSAL GRINDER
 GEAR CUTTER GRINDING ATTACHMENT

NO. 1 $\frac{1}{2}$ -2-3-4-5 UNIVERSAL GRINDERS
 GEAR CUTTER GRINDING ATTACHMENT

<u>PART NO.</u>	<u>PART NAME</u>	<u>QUANTITY</u>
UG-165	Base	1
UG-166	Clamp Collar	1
UG-167	Swinging Arm	1
S-57	Tongue Block (No. 1 $\frac{1}{2}$ & 2)	2
S-122	Thumb Screw	1
S-314	Feed Spring	1
S-621	Setting Arm	1
S-622	Cutter Post	1
S-623	Swinging Arm Post	1
S-624	Spring Bar	1
S-625	Index Spring	1
S-627	Feed Screw	1
S-630	Clamp Collar Nut	1
S-1461	Thumb Screw	1
S-8089	Tongue Block (No. 3-4 & 5)	2
S-10049	Cutter Post Nut	1
S-12017	Washer	1

LUG-1010



GALLMEYER & LIVINGSTON CO.
 GRAND RAPIDS, MICH., U.S.A.
 No. 3-4 & 5 UNIVERSAL GRINDERS
 INTERNAL GRINDING ATTACHMENT ASSEMBLY

NO. 3-4-5 UNIVERSAL GRINDERS
INTERNAL GRINDING ATTACHMENT

<u>PART NO.</u>	<u>PART NAME</u>	<u>QUANTITY</u>
UG-111	Spindle Housing	1
UG-112	Bracket (No. 3 & 4)	1
UG-113	B. B. Plate (LH)	1
UG-114	B. B. Plate (RH)	1
UG-115	Drive Pulley (No. 3 & 4)	1
UG-241	Bracket (No. 5)	1
UG-242	Drive Pulley (No. 5)	1
S-12	Loose Flange	1
S-12 $\frac{1}{2}$	Loose Flange Screw	1
S-28	Tee Bolt	2
S-42	Tee Bolt Washer	2
S-580	Clamp Bolt	1
S-581	Spindle	1
S-582	Spindle Extension	1
S-583	Spindle Pulley	1
S-584	Spacer Sleeve	2
S-1987	Ball Bearing	2
S-2001	Belt (No. 3 & 4)	1
S-2753	Washer	1
S-5871	Spindle Nut	1
S-7229	Felt Ring	2
S-8049	Belt (No. 5)	1
S-8233	Straight Oiler	2
S-8740	Nut	3
S-12046	Grinding Wheel (1 $\frac{1}{2}$ "x3/8"x $\frac{1}{2}$ " C/B One Side)	1
S-12047	Grinding Wheel (1"x3/8"x $\frac{1}{2}$ " C/B One Side)	1
S-12048	Grinding Wheel (3/4"x7/16"x1 $\frac{1}{2}$ " C/B One Side)	1