

TROY ENGINE & MACHINE CO.

TROY, PENNSYLVANIA

Manufacturers of Center-Crank Steam Engines



TROY ENGINES:

Back of the Troy engine stand 30 years of specialized effort to produce the best engine selected materials, skilled workmen and engineering experts are capable of. We are therefore justly proud of the world-wide reputation for excellent efficient service which the Troy engines have gained.

Troy engines are especially adapted for and give excellent service in driving:

Stokers	Generators
Fans	Compressors
Positive Pressure	Dryers
Blowers	Scrubbers
Centrifugal Pumps	Auxiliary Equipment
Rotary Pumps	in large plants

14

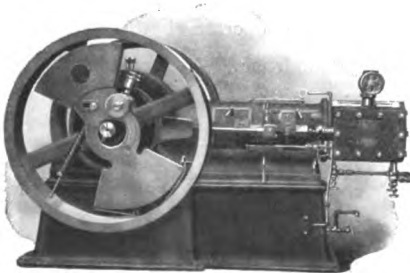
The standard Troy Engines are listed below. Column P gives the maximum usual pressure and Column S the number of sizes made.



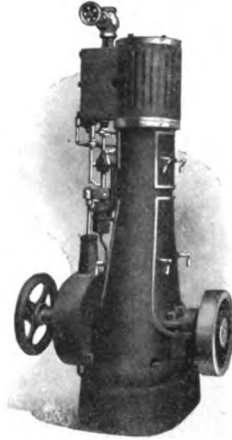
Troy Engines	P	S
Vertical Automatic.....	80-160	13
Horizontal Automatic.....	80-160	8
Vertical Direct-Connected.....	80-160	13
Horizontal Direct-Connected.....	80-160	8
Vertical Throttling.....	80-160	14
Horizontal Throttling.....	80-160	9
Vertical Low-Pressure.....	10- 40	10
Horizontal Low-Pressure.....	10- 40	6

All the above are made either enclosed and self-oiling, or open with gravity lubrication.

Sizes—2 to 200 H. P.



Horizontal Automatic Type for Belted Service



Special Type of Vertical Throttling for D. C. to Fan or Blower

All Troy Engines are built in the center-crank type and of compact and symmetrical design. The cylinder, frame and base are independent parts, machine fitted and interchangeable.

The Base is of a heavy substantial pattern enclosed for the collection of oil and water.

The Frame is of heavy construction and forms the main bearings. These are lined with the best genuine babbit metal.

The Cylinder and Steam-Chest are one casting built generously to stand a stipulated steam pressure.

The Valves are of the balanced type—always steam-tight.

The Piston is a single casting; cored center to lighten. Grooved and provided with removable packing rings to make piston steam-tight.

The Crosshead is adjustable to take up wear and is provided with thorough lubricating passages.

The Crankshaft and Connecting Rod are steel forgings. The Connecting Rod is extra long to minimize friction, save power and lengthen life of bearings.

The Self-Oiling System (patented) thoroughly lubricates, saves oil and operates automatically. The bearings run in oil, minimizing wear, and the cost of lubrication is less. The oil pump and the check valve are designed especially for this service.

There are three types of engines made: Low Pressure for steam from 10 to 35 lbs., Standard for steam at from 60 to 160 lbs. and Special engines to take care of pressures exceeding 160 lbs. and to operate on superheated steam.

Each order receives personal attention so as to adapt the engine in the nicest possible manner for the service it has to perform. Blue prints giving general dimensions can be furnished to permit you to run lines, make foundation, etc.

Catalogs mailed you upon request. Our engineering staff is also at your service in aiding you to select the proper equipment.