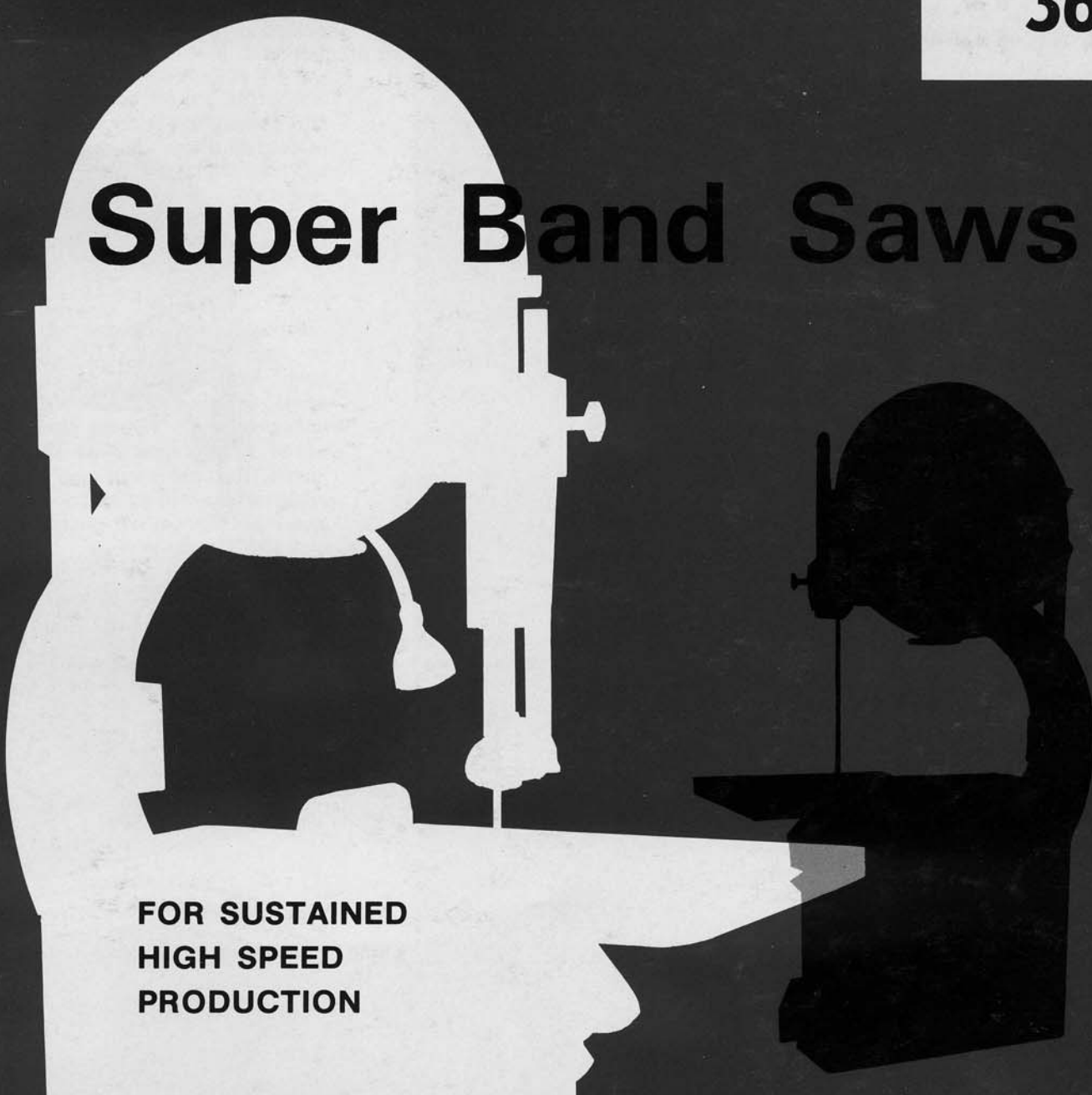




SUPER

36"

Super Band Saws

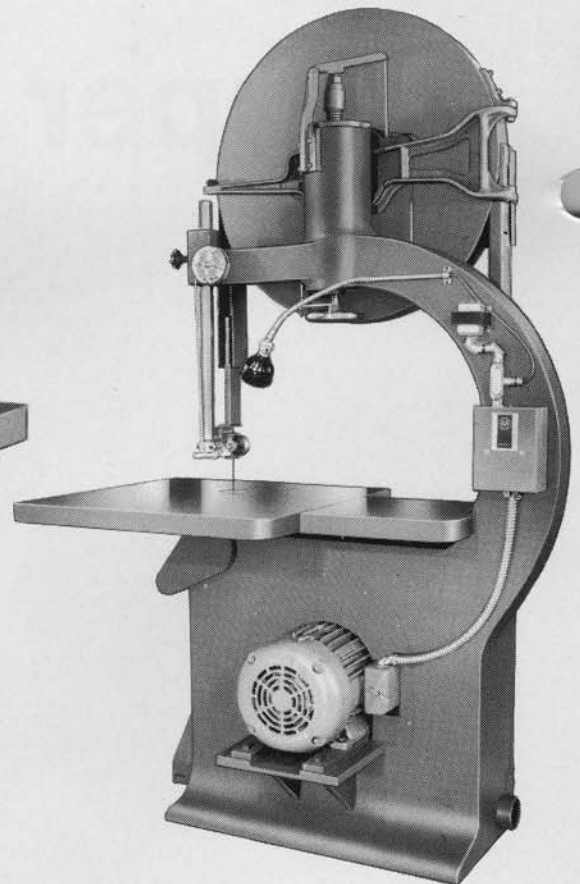
The background of the advertisement features two silhouettes. On the left, a white silhouette of a person wearing a hard hat and safety glasses is shown from the chest up, looking towards the right. On the right, a black silhouette of a band saw machine is shown, with a large wheel and a vertical blade. The person's silhouette is positioned as if they are operating the saw.

**FOR SUSTAINED
HIGH SPEED
PRODUCTION**

Super 36" High Speed Band Saw 24" standard capacity under

Moak High Speed Band Saws are operating efficiently in hundreds of mills, ship-yards, foundries, furniture, airplane and automobile factories and other wood and metal-working plants throughout the country. These machines are noted for their long-lasting, trouble-free service especially on sustained high-speed production.

They are designed for quiet, vibration-free performance . . . are factory lubricated for life . . . All controls are located where the operator can reach them without changing position. The work table height is a comfortable 40 inches from the floor. These important features reduce operator fatigue and add considerably to improved production.



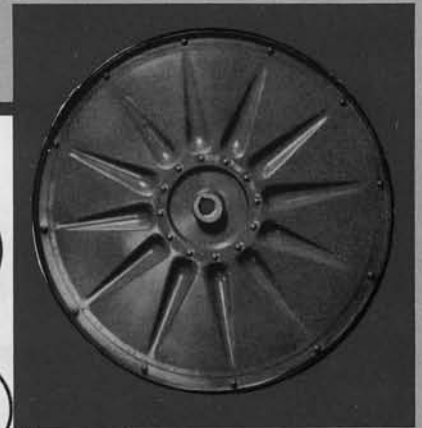
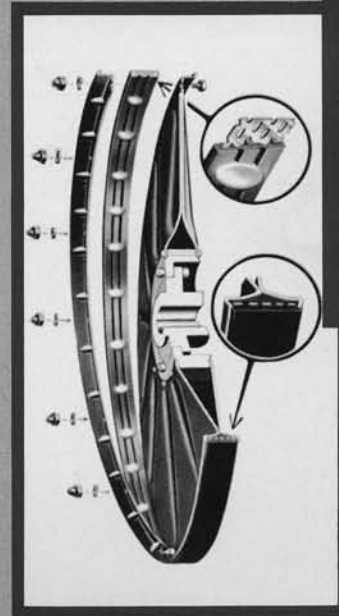
There is no straining, bending or loss of time moving all around a Moak Saw to make a necessary adjustment. All controls are located where the operator can readily reach them without changing position.

provides guide . . .

It's no wonder Moak Band Saws are the most imitated in the wood-working industry. Model for model . . . feature for feature . . . They are unsurpassed in value and dependability. From the rugged one piece frame and sturdy base . . . the precision machined table . . . throughout the smooth-working component parts . . . Moak Saws have been tested and proven superior for sustained high speed production.

Another outstanding design feature which contributes to the long service record of Moak Band Saws is the fact they are lubricated for life. Motor and wheel bearings are pre-lubricated with a specially-treated lubricant and sealed against dirt and contaminants. The working height of the saw table has been set at 40" from the floor. Field tests have proven this to be an ideal height for the average man for maximum efficiency.

All controls are arranged within easy reach of the operator so that all necessary adjustments can be made without moving his position. These adjustments include . . . tilting and locking the table from 45 deg. to the right, to 5 deg. to the left . . . Raising, lowering and locking of the upper guide bar . . . setting the desired saw blade tension . . . altering the tracking position of the blade . . . and stopping the blade in less than 5 seconds with the mechanical equalized two wheel brakes . . . ALL WITHOUT MOVING FROM THE NORMAL OPERATION POSITION.

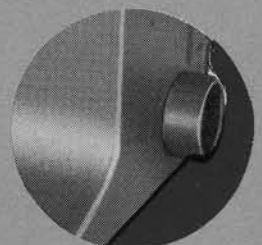
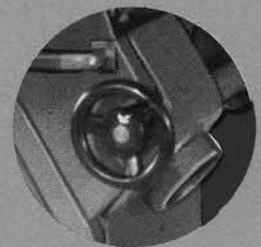


CARTER
SUPER-RIGID
WHEELS WITH
LOK-ON TIRES

All Moak 36" Band Saws are furnished with this patented wheel made of two stamped discs, carefully assembled together for dimensional accuracy and balance. These wheels are deeply fluted for additional strength and are welded electrically at forty-eight points. Discs are identical except that the retaining rim of one is demountable by removing eight acorn nuts and spring steel lock washers. The saw blade rides on the top of the steel-centered rubber tire and centrifugal force cannot cause the saw to break contact with the tire — nor can the tire be thrown in entirety or in segments. This tire will far outlast the conventional type of cemented rubber and when replacement does become necessary a production break of only a few moments is required. This unique construction is clearly illustrated above.

FREE FLOWING EXHAUSTS

Two exhausts are provided to do away entirely with dust and cuttings. The upper exhaust pulls particles away from the table and stock, while the lower one keeps the gullet of the saw clean and free from cuttings.

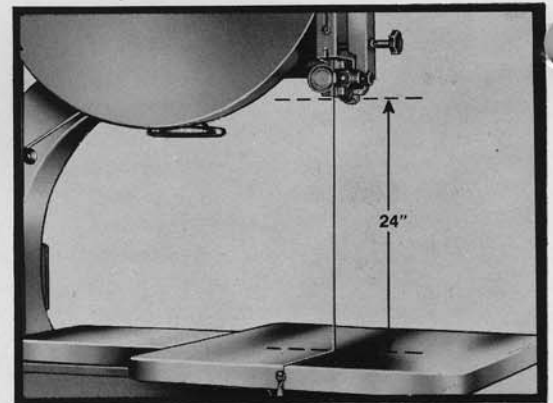
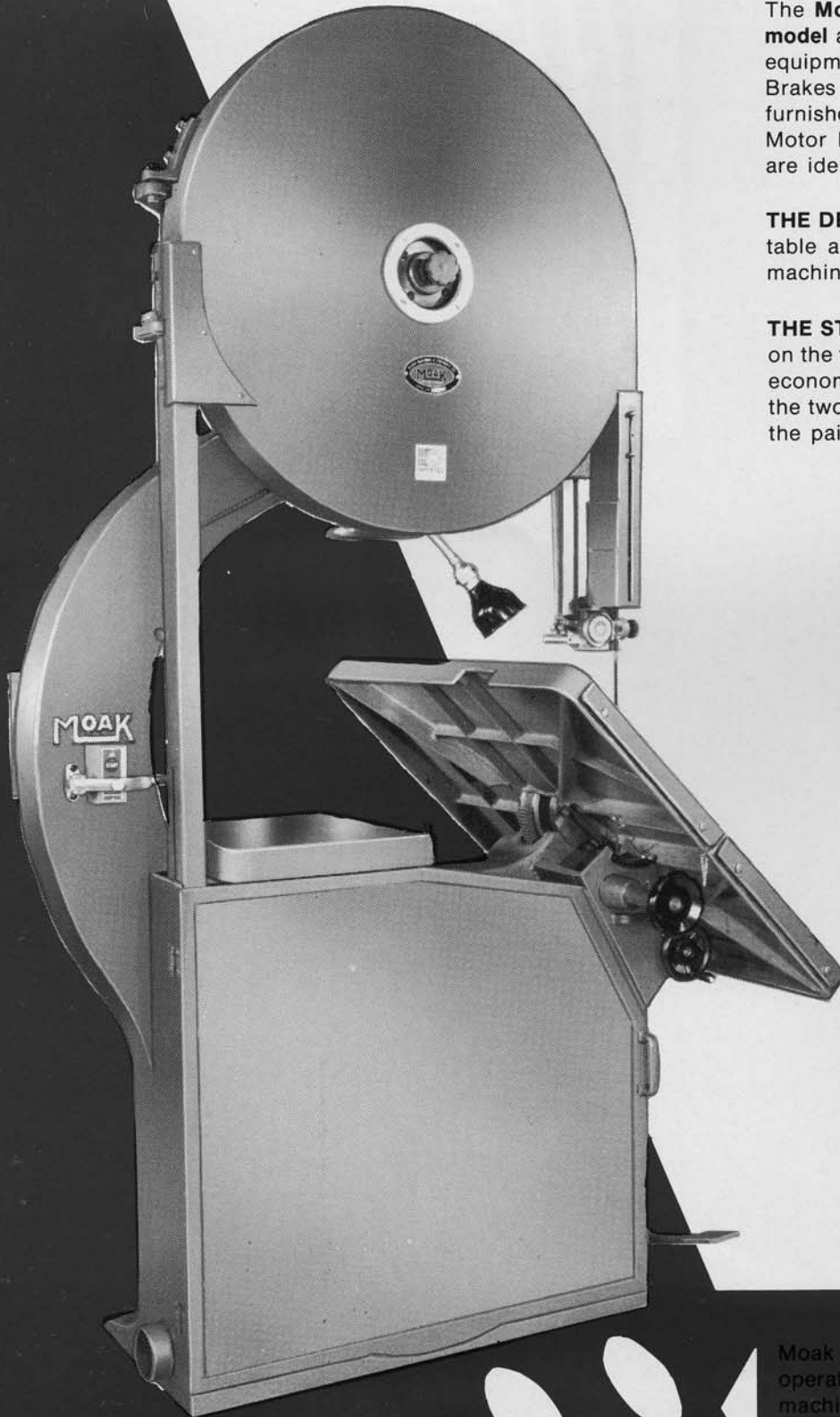


Super 36" Band Saws for sustained high speed capacity

The **Moak 36" Super Band Saws** are built in a **Deluxe model** and a **Standard model**. They both carry the same equipment such as Mechanical Equalized Two-Wheel Brakes and Blade Tension Indicator. They can be furnished with Belt Drive, Belted Motor Drive or Direct Motor Drive equipment. All dimensional specifications are identical on both models.

THE DELUXE MODEL has a ground finish on the tilting table and sub-table and the entire machine is given a machine tool finish.

THE STANDARD MODEL comes with a machined finish on the tilting table and sub-table and the machine has an economy finish. This means that the difference between the two models is in the type of finish on the tables and the painting of the complete machine.



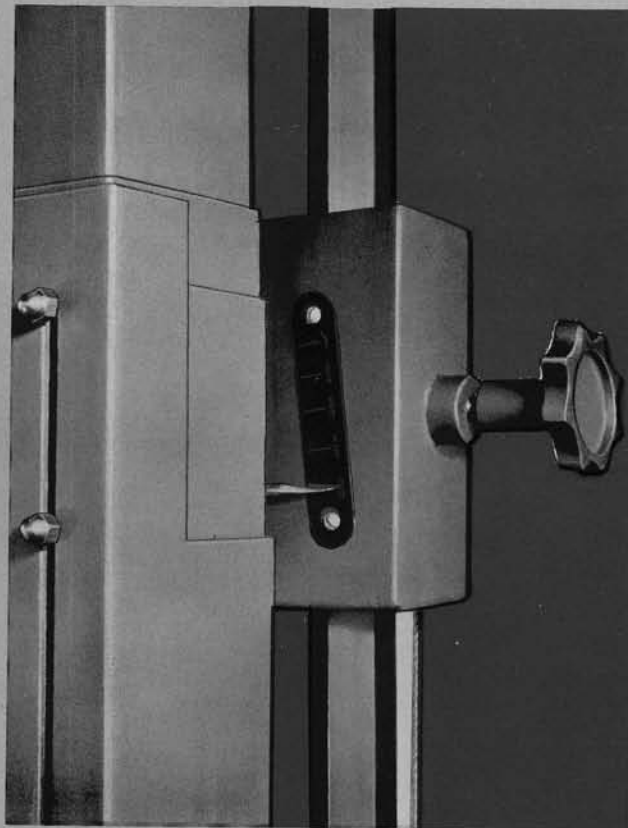
The above view illustrates the 24" cutting height between the table and the upper guard at its extreme upper position. View at left shows the table tilted to 45° and the guarding and dust chutes that provide protection and efficiency to the operator. Note the convenient and compact tilting and locking controls under the table and the fully machined rocker upon which the table tilts 45° to the right and 5° to the left with convenient stops at both extreme positions.

Moak produces the only line of Band Saws on which the operator can make every necessary adjustment to the machine without moving from his normal operating position. This value feature improves efficiency and increases production volume.

production

ALTERNATE DESIGNS AND FEATURES

1. **LEFT HAND BAND SAW** can be furnished in all models, other specifications same as SUPER BAND SAW, only for cutting on left hand side of machine.
2. **CORRUGATED BOARD CUTTING BAND SAWS** are built with special stationary semi-steel table 37½" x 51½" with machined finish and graduated lines and include two special rip fences. Prices on application.
3. **METAL CUTTING BAND SAWS** can be furnished for friction sawing of steel, sawing of aluminum and plastic materials and other special sawing applications. Prices on application.
4. **VARIABLE SPEED BAND SAWS** can be furnished on belted motor drive machines in 3 to 1 ratios. Prices on application.
5. **DYNAMIC BRAKE**, used in combination with "Mechanical Equalized Two-Wheel Brakes" to make sure that the blade comes to a complete stop after the operator leaves the machine. Will stop wheels in 10 seconds or less. Actuated by either "Stop" button or brake pedal.
6. **SPECIAL APPLICATIONS**, can be designed and built for all types of sawing. Send us your requirements and we will work out a machine of the proper design and capacity to do the job. Proposals will be made without charge.



BRAKE TENSION INDICATOR as shown in the above view consists of a plate marked with blade widths and a pointer showing the proper tension for various width blades, as required by OSHA.

24" HEIGHT UNDER GUIDE as indicated on opposite page provides unusual capacity for a 36" Band Saw.

TABLE TILTING AND LOCKING MECHANISM, as illustrated in several views in this bulletin, is the most modern, convenient and efficient arrangement and will not be found on any other Band Saw. The large Locking Knob positively clamps the table in any desired position. The tilting hand wheel can be rotated to tilt the table for exact angular adjustment or the table can be grasped on each edge and instantly tipped to any position without touching the hand wheel. Stops are provided for table extreme positions of horizontal, 5° to the left and 45° to the right.

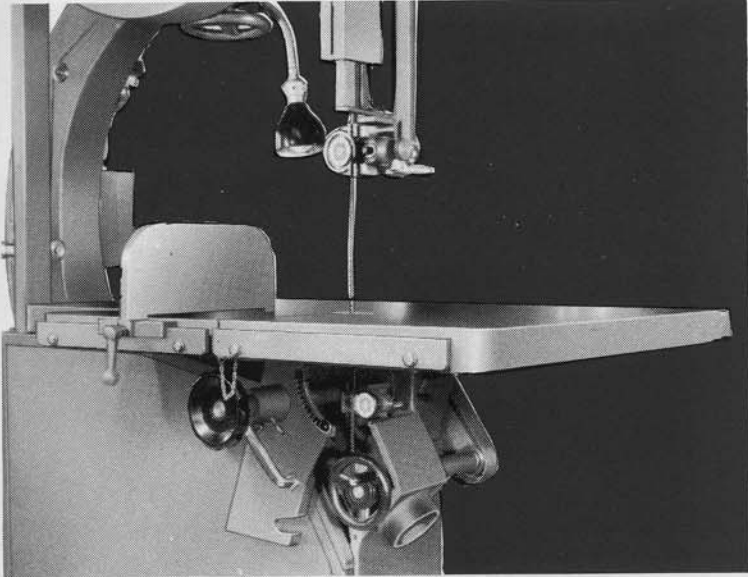
RIP FENCE is also illustrated in several views and can be moved to either side of the cutting blade and clamped in position or completely removed from the machine.

MITER GAUGE slides back and forth in a groove machined in the table and can be set to any angle required.

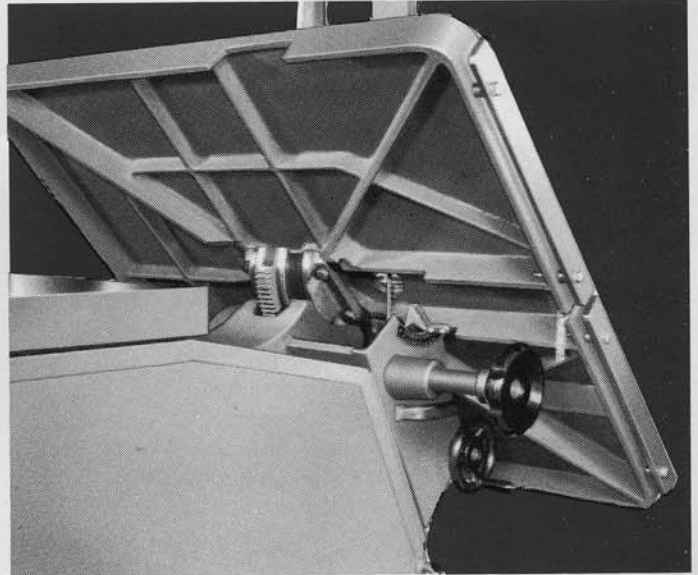
FLEXIBLE NECK MACHINE LIGHT with shade is shown in several views in this bulletin and provides the operator with optimum lighting conditions for fine detail sawing. Comes completely installed and wired with 115 volt transformer.



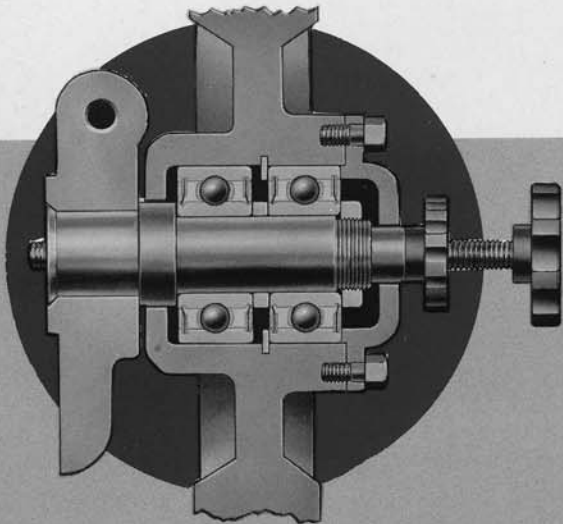
THESE Exclusive FEATURES PROVIDE UNSURPASSED EFFICIENCY



THE MOAK FRAME is a one-piece casting heavily braced by internal ribbing. The guide bar support is part of the main casting; also, the upper wheel slide and table rocker bearing are machined on the integral main frame — not bolted on. All castings are fully normalized before machining to assure lifetime accuracy.



THE MOAK TABLE is a strongly ribbed semi-steel casting, rough machined and normalized to prevent warping, before final finishing. On the Deluxe Model the top is ground true with a glass-like finish and on the Standard Model the top has a broad nose machined finish, both models are fitted with a replaceable throat piece made of plastic for wood cutting or hardened steel for metal cutting. It is mounted on a machined and scraped rocker and tilts from 45° to the right to 5° to the left through a machine cut steel pinion and segment gear, which may be locked in any position. Pointer and quadrant accurately indicate angle setting. Table height is 40".

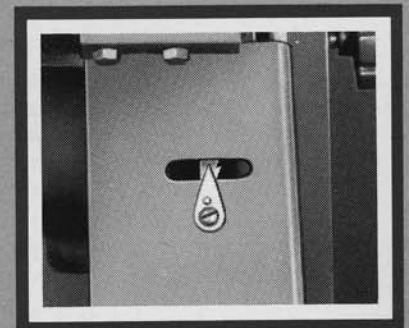


BALL BEARINGS

In the upper wheel, two ball bearings are placed equi-distant from center which distributes pressures evenly over the bearing spindle. The spindle remains stationary and is an integral part of the hinged casting which allows the upper wheel to be tilted for tracking the saw blade.

LUBRICATED FOR LIFE

Moak Band Saws now completely eliminate the biggest element in the maintenance of high speed band saws . . . the need for periodic lubrication. Eliminated, too, are two of the most frequent causes of lost time . . . over-greasing and undergreasing of the motor and machine ball bearing. Double-width ball bearings are prelubricated with more-than-ample supply of specially-treated lubricant, and factory sealed to keep dirt out and grease in for the life of the bearing.

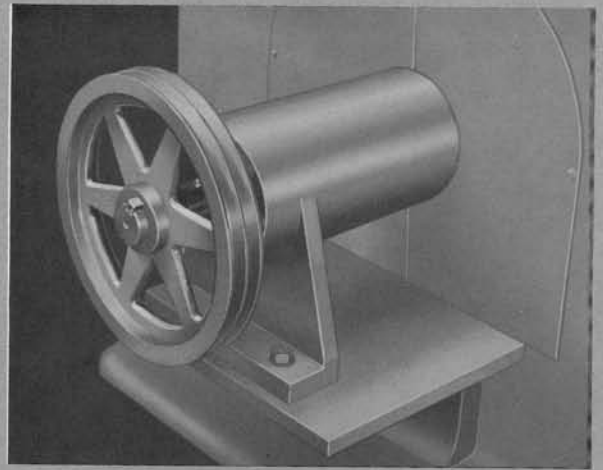


TRACKING GAUGE window is in upper wheel guard. Pointer discloses whether saw blade is centered and if not, makes proper adjustment easy. This device is a great time saver and also affords complete protection to the workman while tracking the saw.

AVAILABLE DRIVES

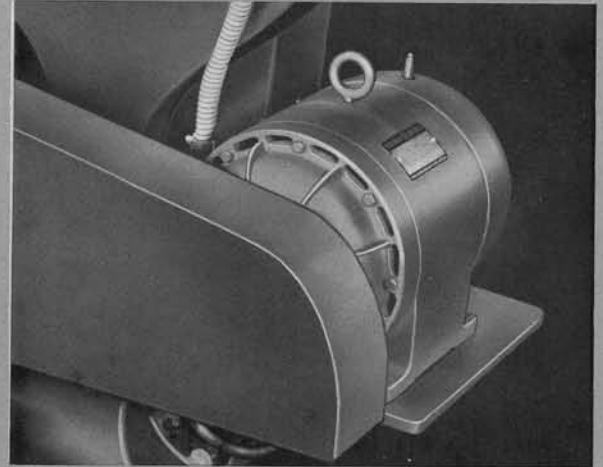
BELT DRIVE

THE MOAK BELT DRIVE machine has a heavy "Lubricated for Life" ball bearing lower wheel unit and is equipped with 12.4" P.D. x 2B groove "V" belt sheave. These machines can be equipped with other sizes of sheaves or flat pulleys for line shaft drive or mounting of the motor on the floor. All drives listed herein can be operated at a maximum of 1200 R.P.M.



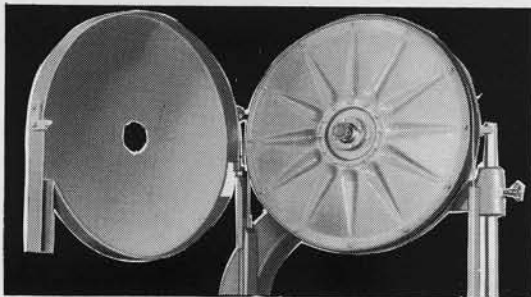
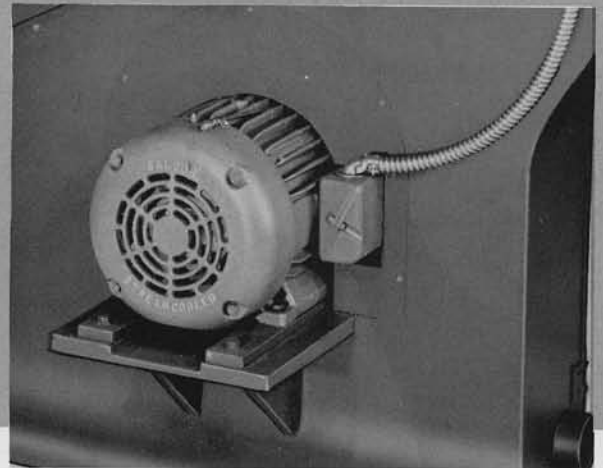
BELTED MOTOR DRIVE

THE MOAK BELTED MOTOR DRIVE is furnished for unusual current characteristics and intermediate speeds. This arrangement consists of a standard belt drive machine driven through a "V" belt drive by a motor mounted on a cast iron pivoted motor base that is adjustable. Speeds from 150 R.P.M. to 350 R.P.M. can be furnished with 900 R.P.M. motor, and speeds from 350 R.P.M. to 1200 R.P.M. with 1800 R.P.M. motor.



DIRECT MOTOR DRIVE

DIRECT MOTOR DRIVE (lower wheel mounted directly on motor shaft) is recommended where motor frame and speeds are suitable. All motors are ball bearing type with 100% overload capacity. Remote control push button starter provides overload and under-voltage protection. Furnished with motor speeds of 600 R.P.M. (5,420 ft. per minute), 720 R.P.M. (6,350 ft. per minute), 900 R.P.M. (8,250 ft. per minute) and 1200 R.P.M. (10,850 ft. per minute).



IMPROVED GUARDS provide complete protection and safety to the operator. Both upper and lower wheels are completely enclosed with sheet metal guards that swing wide on long lasting hinges. The upper guard raises and lowers with the wheel and fully protects the operator in event of blade breakage. All portions of the saw blade are enclosed or guarded, except for the working portion of the blade between the bottom of the guide rollers and the table, as provided by OSHA.

BRAKES

The mechanical equalized two-wheel brakes are available on all models of Moak Band Saws . . . The mechanical equalized two-wheel system provides even braking on both upper and lower wheels and shuts off the motor when the foot pedal is depressed. If a saw blade breaks or runs off the wheel, the motor is automatically shut off and both brakes are automatically applied to bring the wheels to a smooth stop. This system requires less than five seconds to stop the wheels of a band saw running at 1200 r.p.m. In addition to their obvious safety advantages, these brakes offer top efficiency and are easily adjusted and serviced to keep maintenance costs at a minimum (Required by OSHA).

Specifications

Super 36"

SIZE OF BAND SAW (Wheel diameter)	36"
WHEEL FACE	2"
HEIGHT OF TABLE FROM FLOOR	40"
SIZE OF TABLE	36" x 36"
SIZE OF AUXILIARY TABLE	18" x 18"
DISTANCE FROM FRONT EDGE OF TABLE TO SAW	13"
DISTANCE FROM SAW TO FRAME OF SAW	35½"
STANDARD CAPACITY UNDER GUIDE	24"
TABLE TILTS TO RIGHT	45 deg.
TABLE TILTS TO LEFT	5 deg.
UPPER WHEEL HAS VERTICAL ADJUSTMENT	10½"
MAXIMUM SAW LENGTH	19'9"
MAXIMUM HEIGHT REQUIRED	8'4"
HORSEPOWER REQUIRED	5, 7½, or 10
FLOOR SPACE REQUIRED	38" x 61"
BASE SIZE	17½" x 39"
NET WEIGHT	2500 lbs.
DOMESTIC SHIPPING WEIGHT	2950 lbs.
BOXED FOR EXPORT GROSS WEIGHT	3350 lbs.
BOXED FOR EXPORT-CONTENT	170 cu. ft.

STANDARD EQUIPMENT

On both Deluxe and Standard models Mechanical Equalized Two-Wheel Brakes and Blade Tension Indicator are furnished, to meet OSHA standards. Other equipment includes pre-lubricated ball bearings, tilting table, two ball bearing saw guides, complete guards, guide bar counterbalance, Carter Steel Disc Wheels including demountable tires for speeds up to 1200 r.p.m., two dust spouts and one ⅜" blade.

OPTIONAL DRIVES

Belt Drive, Belted Motor Drive, Direct Motor Drive or Variable Speed Drive with 5, 7½, or 10 h.p. motors.

EXTRA EQUIPMENT

RIP FENCE can be used on either side of saw and locked in position.

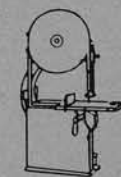
MITER GAUGE complete with slide.

SPRING ROLLER HAND RE-SAW DEVICE, for use in connection with Rip Fence.

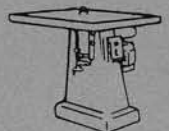
PADDOCK GUIDES "Lubricated for Life," particularly suited for metal cutting.

FLEXIBLE NECK MACHINE LIGHT with shade and 115 volt transformer.

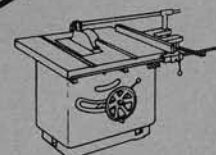
J.I.C. STARTER AND WIRING consisting of Combination Starter with fusible disconnect switch and 115 volt control circuit transformer all with Nema Type 12 enclosure.



BAND SAWS



SPINDLE SHAPERS



TILTING ARBOR SAWS



HAND JOINTERS

MOAK MACHINE & FOUNDRY COMPANY

2547 CONNER STREET
PORT HURON, MICHIGAN 48060

AREA CODE 313
985-7164